

RUSTIC ROADS COMMISSION FREDERICK COUNTY, MARYLAND

30 North Market Street, Third Floor Frederick, Maryland 21701 (301) 600-1149



MEMORANDUM

TO: Rustic Roads Commission
FROM: Beau Lockard, Historic Preservation Planner
DATE: November 4, 2024
RE: Candidate Roads in Community Growth Areas and Municipal Limits

Issue:

Should Candidate Roads that are in Community Growth Areas and Municipal Limits be removed from the Candidate Roads List?

Background and Discussion:

A recent question concerning construction activity around Bloomfield lead Staff to evaluate the Candidate Roads List to see if there are other Candidate Roads that are in Community Growth Areas or Municipal Limits. Staff found thirteen roads on the Candidate Roads List that are partially or entirely within Community Growth Areas or within Municipal Limits.

County roads that are in Community Growth Areas are eligible for future nomination to the Rustic Roads Program, but should not qualify for the Candidate Roads List based on the objective criteria set forth by the *A Rustic Roads Program* report that originally created the Candidate Roads List. Four of these roads, Doctor Baxter Road, Ifert Drive, Old Pryor Road, and Rock Hall Road, are on the Category B List.

Two of the roads, Bloomfield Road and Chick Lane, are within Municipal Limits. Bloomfield Road is part of a City of Frederick approved residential development. Chick Lane is maintained by DPW which recommends that this road be removed from the Candidate Roads List since it is in Rosemont, which has its own government structure.

Some roads are only partially within a Community Growth Area. Those roads were included for the Commission to consider. Roads that border a Community Growth Area, but are not within one, were not included in this list.

All images are from the publicly accessible Frederick County Property Explorer GIS.

Staff Recommendation:

Commissioners should review the thirteen roads and vote to remove the ones that do not qualify for the Candidate Roads List based on objective criteria set forth by the *A Rustic Roads Program* report.

Crickenberger Road - Partially in New Market CGA



Doctor Baxter Road, Hildebrand Road, Tobery Road - Linganore CGA



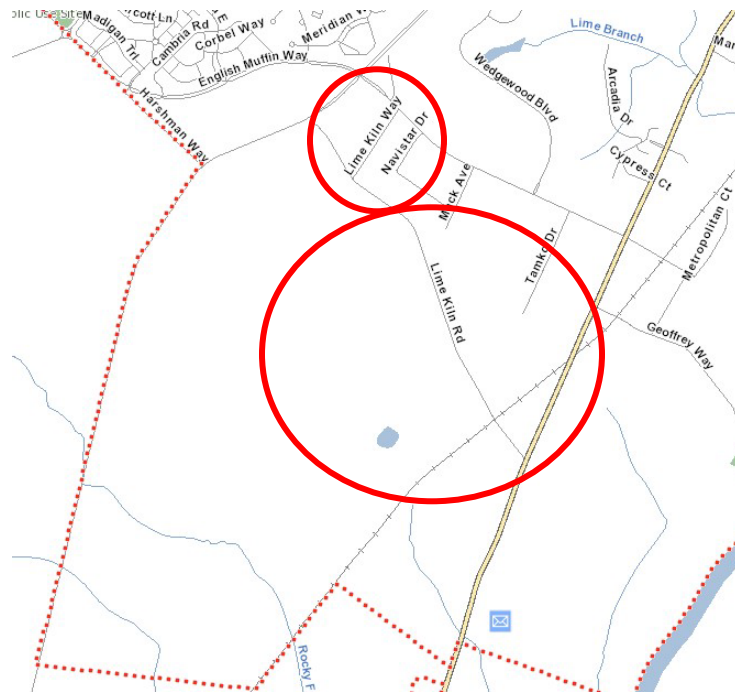
Ifert Drive - Middletown CGA



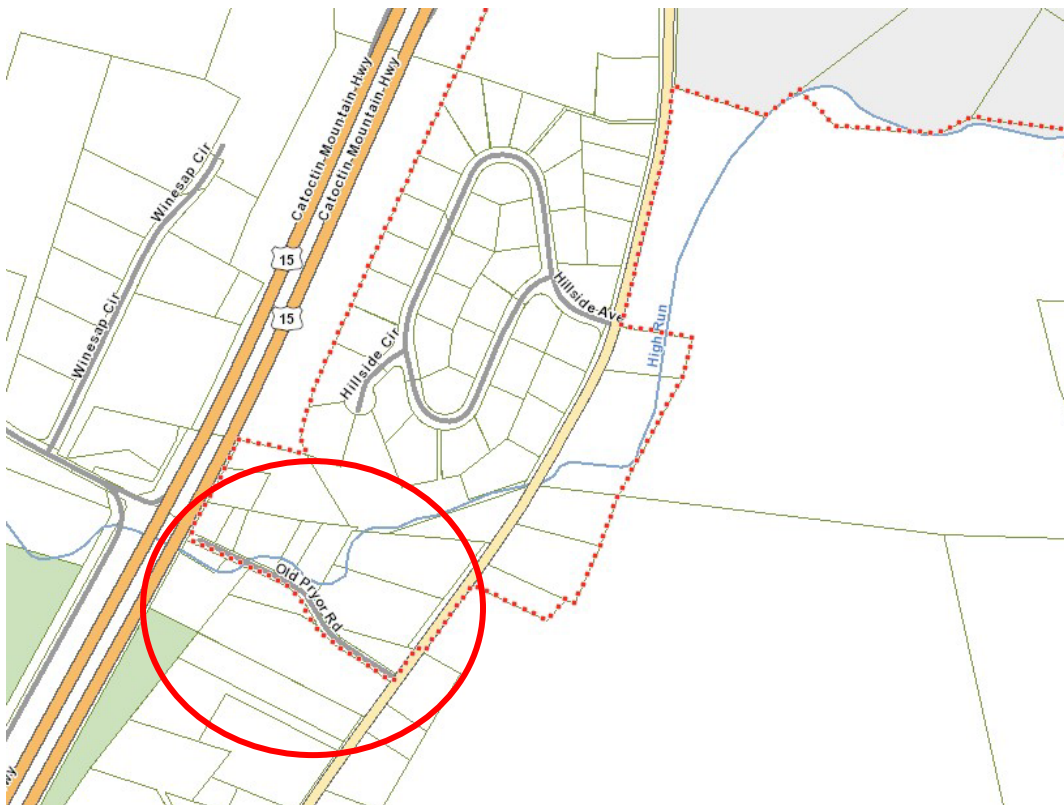
Keller Lime Plant Road - Partially in Buckeystown CGA



Lime Kiln Way, Lime Kiln Road- Frederick CGA



Old Pryor Road - Thurmont CGA



Retreat Road- Partially in Walkersville CGA



Rock Hall Road - Partially in Point of Rocks CGA



Welty Road – Partially in Emmitsburg CGA

