

THE EFFECTIVE DATE OF THIS RESOLUTION IS June 16, 2020

RESOLUTION NO. 20-17

RE: SALE OF SURPLUS REAL PROPERTY

The Annotated Code of Maryland, Local Government Article §10-312, authorizes the County to dispose of real property no longer needed for public use.

In 1992, the Board of County Commissioners purchased a 162.22 acre +/- parcel of land known as "Knowledge Farms" having frontage on MD 355 and on MD 80 in the Urbana area from the Frederick County Humane Society, Inc. and the Montgomery County Humane Society, Inc.

The original parcel was subdivided in 1994 to convey a 59.718 acre +/- parcel to the Board of Education of Frederick County for construction of Urbana High School.

The County owns the remaining 100.481 acres (+/-) from the original tract of land, which is bisected by Campus Drive. The portion of the property lying to the west and south of Campus Drive containing 21.355 acres (+/-) the 'Remainder Lot' on Exhibit A hereto is not needed for public use. The portion of the property lying to the east of Campus Drive is being utilized for County facilities and other public purposes.

Upon a finding by the County Council that the Knowledge Farms 'Remainder Lot' comprised of 21.355 acres more or less, is no longer needed by the County for a public purpose, the property can be disposed of.

NOW, THEREFORE, BE IT RESOLVED BY THE COUNTY COUNCIL OF
FREDERICK COUNTY, MARYLAND, that the real property known as Knowledge Farms
'Remainder Lot' containing 21.355 acres, more or less as shown on Exhibit A hereto is no longer
needed for public purposes; and

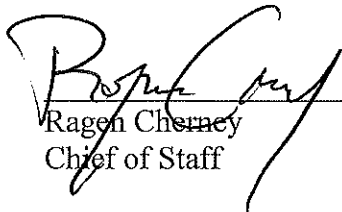
BE IT FURTHER RESOLVED that County real property commonly known as Knowledge
Farms 'Remainder Lot' may be disposed of by the County Executive.

BE IT FURTHER RESOLVED that the County Executive and such other officers, officials
and employees of the County as the County Executive may designate are authorized and
empowered to execute all documents, instruments and certificates; and otherwise to take all actions
necessary to consummate the disposal of the 'Remainder Lot'.

The undersigned certifies that this Resolution was approved and adopted on the 16th day
of June, 2020.

ATTEST:

COUNTY COUNCIL OF FREDERICK
COUNTY, MARYLAND


Ragen Cheney
Chief of Staff

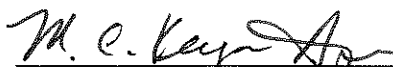

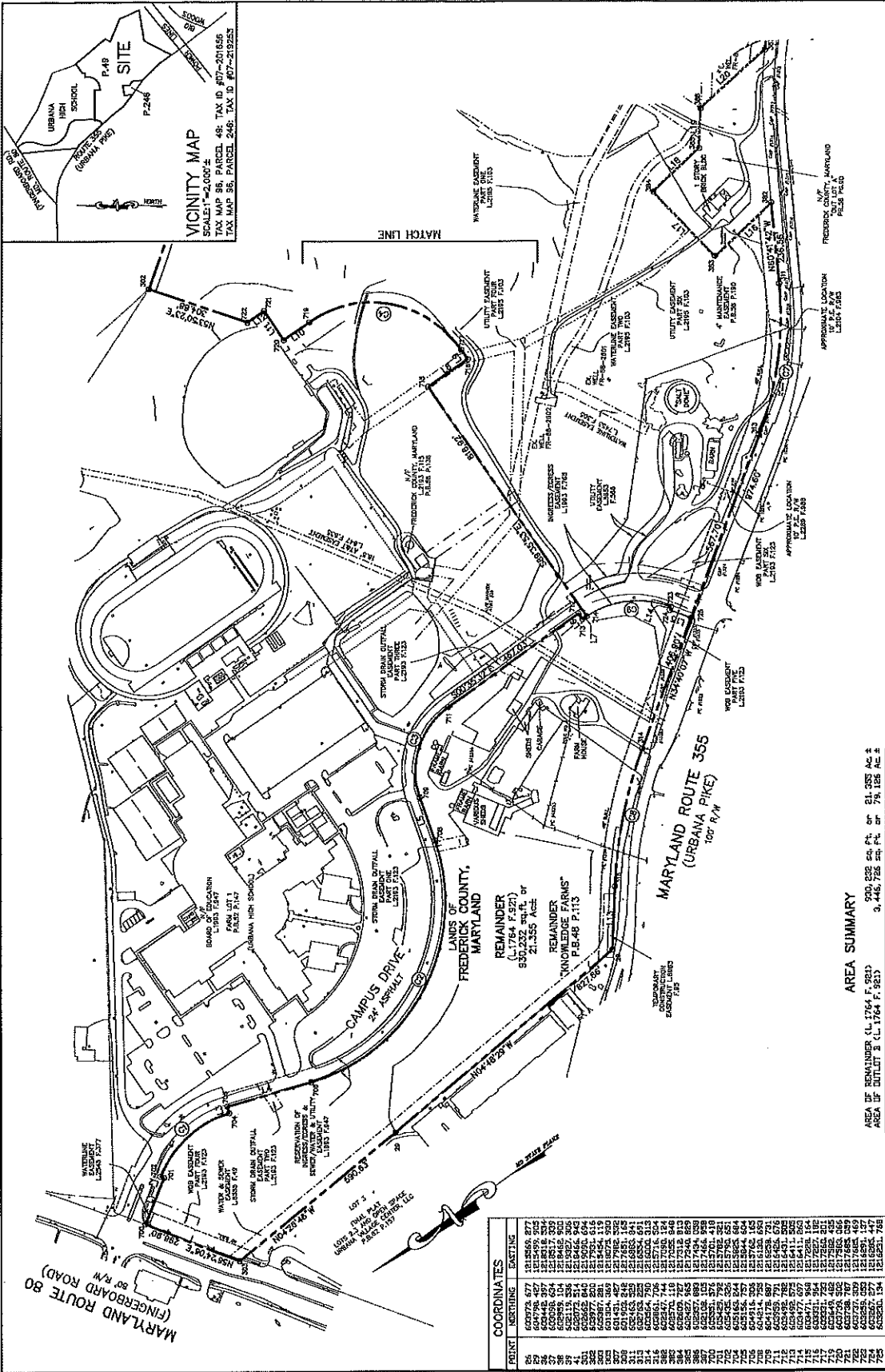
By: 
M. C. Keegan-Ayer, President 

Exhibit A



OWNER:
 FREDERICK COUNTY, MARYLAND
 COUNTY COMMISSIONERS
 12 E. CHURCH STREET
 FREDERICK, MD. 21701-5402

PROJECT: M2205
 AFFP: 13375
 REVISIONS:
 P.E. Tj.

OUTLET PLAT
KNOWLEDGE FARMS
 ACCORDING TO A DEED RECORDED IN LIBER 1764 F. 563 AND
 SHOWN ON ORIGINAL PLAT KNOWLEDGE FARMS, PREVIOUSLY RECORDED IN
 PLAT BOOK 48 PAGE 113
 AND URBANA ELECTION DISTRICT MAP (P. 1)
 AND URBANA ELECTION DISTRICT MAP (P. 1)
 FREDERICK COUNTY, MARYLAND
 SCALE: 1"=200'
 FEBRUARY, 2020

SHEET 1 OF 2

DATE	REVISIONS

SYMBOLS:
 O EXISTING LOT
 □ EXISTING MONUMENT SET
 □ CONCRETE MONUMENT SET
 UNLESS OTHERWISE INDICATED.

MINIMUM BUILDING RESTRICTION LINES
 "A" AGRICULTURAL
 FRONT: 40'
 REAR: 30'
 SIDE: 50'

CC RESTRICTION
 FRONT: 50'
 REAR: 30'
 SIDE: 50'

NOTES:
 1. THIS PLAT WAS PREPARED WITH THE BENEFIT OF A TITLE EXAMINATION REPORT
 2. THE SITE IS ZONED "A" (AGRICULTURAL) & "CC" (RESOURCE CONSERVATION).
 3. A 6' WIDE DRAINAGE & UTILITY EASEMENT IS RESERVED ALONG ALL LOT LINES.
 4. THERE ARE NO WELLS OR SEPTICS WITHIN 100' OF SITE UNLESS OTHERWISE
 SHOWN.
 5. (AGRICULTURAL) PORTION ZONED "A" & S-1 ON PORTION ZONED "A"
 AND SEWER CLASSIFICATION IS "CC" CLASSIFIED AS "NCS" (NO PLANNED
 SERVICES).
 6. THE APPROVAL OF THIS SUBDIVISION DOES NOT GUARANTEE AN ADEQUATE OR
 PORTABLE WATERWELL SUPPLY FOR THESE LOTS.
 7. MAP #64621004555 DATED SEPTEMBER 19, 2007.
 NO FLOODING PER FEMA FLOOD

AREA SUMMARY

AREA OF REMAINDER (L. 1764 F. 563)	4,376,998 sq. Ft. or 100.481 AC ±
AREA OF OUTLET (L. 1764 F. 3823)	3,440,726 sq. Ft. or 79.128 AC ±
TOTAL AREA THIS PLAT	7,817,724 sq. Ft. or 179.609 AC ±
TOTAL LOTS 2	

COORDINATES	EASTING	NORTHING
86	600724.677	1212869.877
87	600724.677	1212869.877
88	600724.677	1212869.877
89	600724.677	1212869.877
90	600724.677	1212869.877
91	600724.677	1212869.877
92	600724.677	1212869.877
93	600724.677	1212869.877
94	600724.677	1212869.877
95	600724.677	1212869.877
96	600724.677	1212869.877
97	600724.677	1212869.877
98	600724.677	1212869.877
99	600724.677	1212869.877
100	600724.677	1212869.877
101	600724.677	1212869.877
102	600724.677	1212869.877
103	600724.677	1212869.877
104	600724.677	1212869.877
105	600724.677	1212869.877
106	600724.677	1212869.877
107	600724.677	1212869.877
108	600724.677	1212869.877
109	600724.677	1212869.877
110	600724.677	1212869.877
111	600724.677	1212869.877
112	600724.677	1212869.877
113	600724.677	1212869.877
114	600724.677	1212869.877
115	600724.677	1212869.877
116	600724.677	1212869.877
117	600724.677	1212869.877
118	600724.677	1212869.877
119	600724.677	1212869.877
120	600724.677	1212869.877
121	600724.677	1212869.877
122	600724.677	1212869.877
123	600724.677	1212869.877
124	600724.677	1212869.877
125	600724.677	1212869.877
126	600724.677	1212869.877
127	600724.677	1212869.877
128	600724.677	1212869.877
129	600724.677	1212869.877
130	600724.677	1212869.877
131	600724.677	1212869.877
132	600724.677	1212869.877
133	600724.677	1212869.877
134	600724.677	1212869.877
135	600724.677	1212869.877
136	600724.677	1212869.877
137	600724.677	1212869.877
138	600724.677	1212869.877
139	600724.677	1212869.877
140	600724.677	1212869.877
141	600724.677	1212869.877
142	600724.677	1212869.877
143	600724.677	1212869.877
144	600724.677	1212869.877
145	600724.677	1212869.877
146	600724.677	1212869.877
147	600724.677	1212869.877
148	600724.677	1212869.877
149	600724.677	1212869.877
150	600724.677	1212869.877
151	600724.677	1212869.877
152	600724.677	1212869.877
153	600724.677	1212869.877
154	600724.677	1212869.877
155	600724.677	1212869.877
156	600724.677	1212869.877
157	600724.677	1212869.877
158	600724.677	1212869.877
159	600724.677	1212869.877
160	600724.677	1212869.877
161	600724.677	1212869.877
162	600724.677	1212869.877
163	600724.677	1212869.877
164	600724.677	1212869.877
165	600724.677	1212869.877
166	600724.677	1212869.877
167	600724.677	1212869.877
168	600724.677	1212869.877
169	600724.677	1212869.877
170	600724.677	1212869.877
171	600724.677	1212869.877
172	600724.677	1212869.877
173	600724.677	1212869.877
174	600724.677	1212869.877
175	600724.677	1212869.877
176	600724.677	1212869.877
177	600724.677	1212869.877
178	600724.677	1212869.877
179	600724.677	1212869.877
180	600724.677	1212869.877
181	600724.677	1212869.877
182	600724.677	1212869.877
183	600724.677	1212869.877
184	600724.677	1212869.877
185	600724.677	1212869.877
186	600724.677	1212869.877
187	600724.677	1212869.877
188	600724.677	1212869.877
189	600724.677	1212869.877
190	600724.677	1212869.877
191	600724.677	1212869.877
192	600724.677	1212869.877
193	600724.677	1212869.877
194	600724.677	1212869.877
195	600724.677	1212869.877
196	600724.677	1212869.877
197	600724.677	1212869.877
198	600724.677	1212869.877
199	600724.677	1212869.877
200	600724.677	1212869.877

COORDINATES ARE MARYLAND
 STATE PLANE (NAD 83/91)

APPROVED:
 FREDERICK COUNTY PLANNING COMMISSION
 PLANNING DIRECTOR

Exhibit A