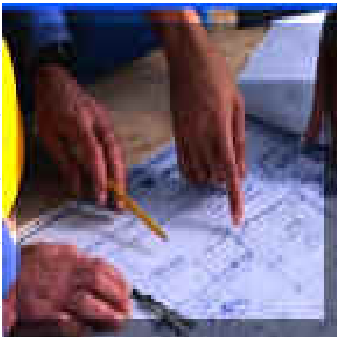


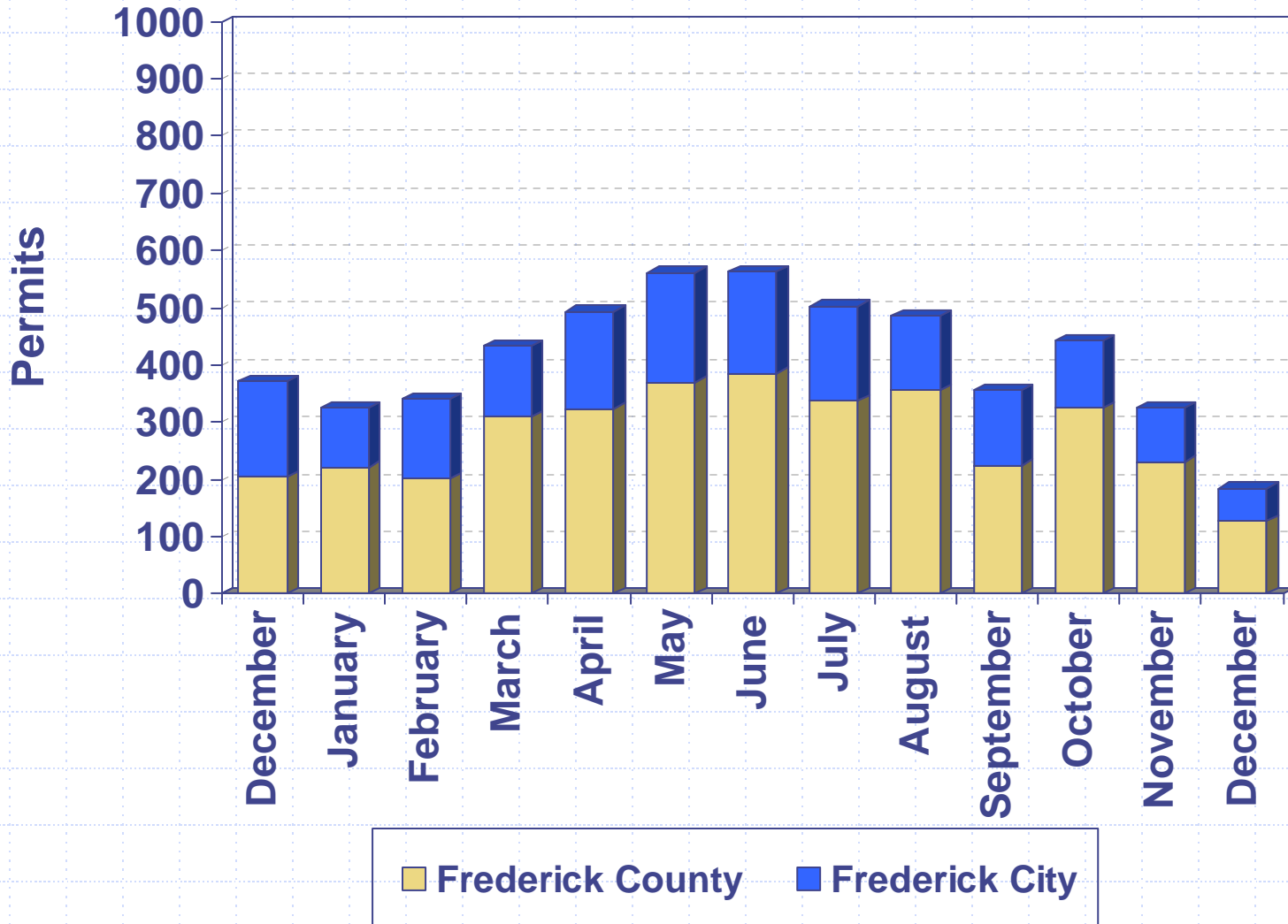


# Division of Permitting and Development Review

- February 7, 2008
- Director's Development Data/Project Presentation to the County Commissioners

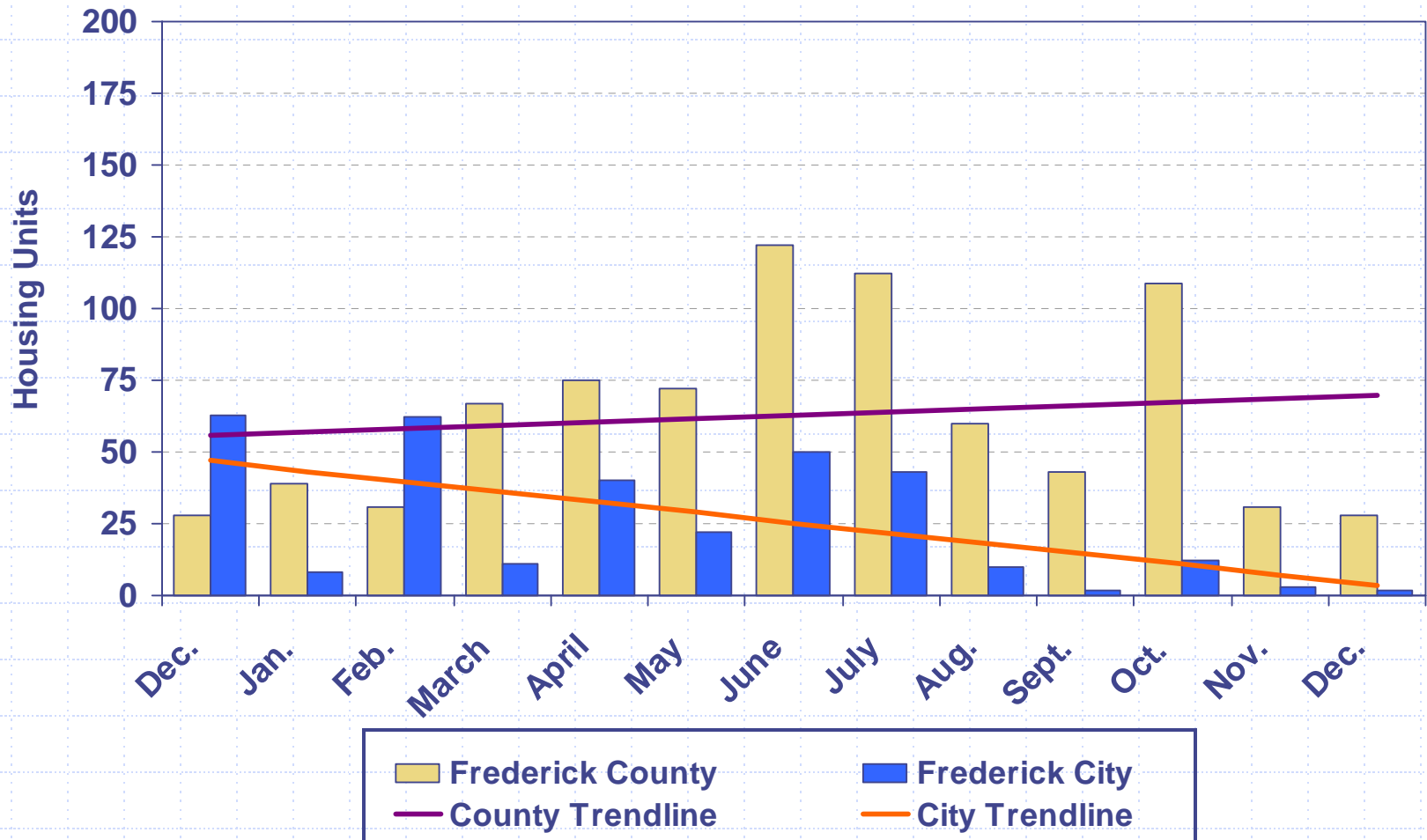


# Building Permits Issued 2006 - 2007



# Housing Unit Construction 2006 - 2007

Housing units based on issued permits



12 Month Total (January 2007 – December 2007): 1,054 units

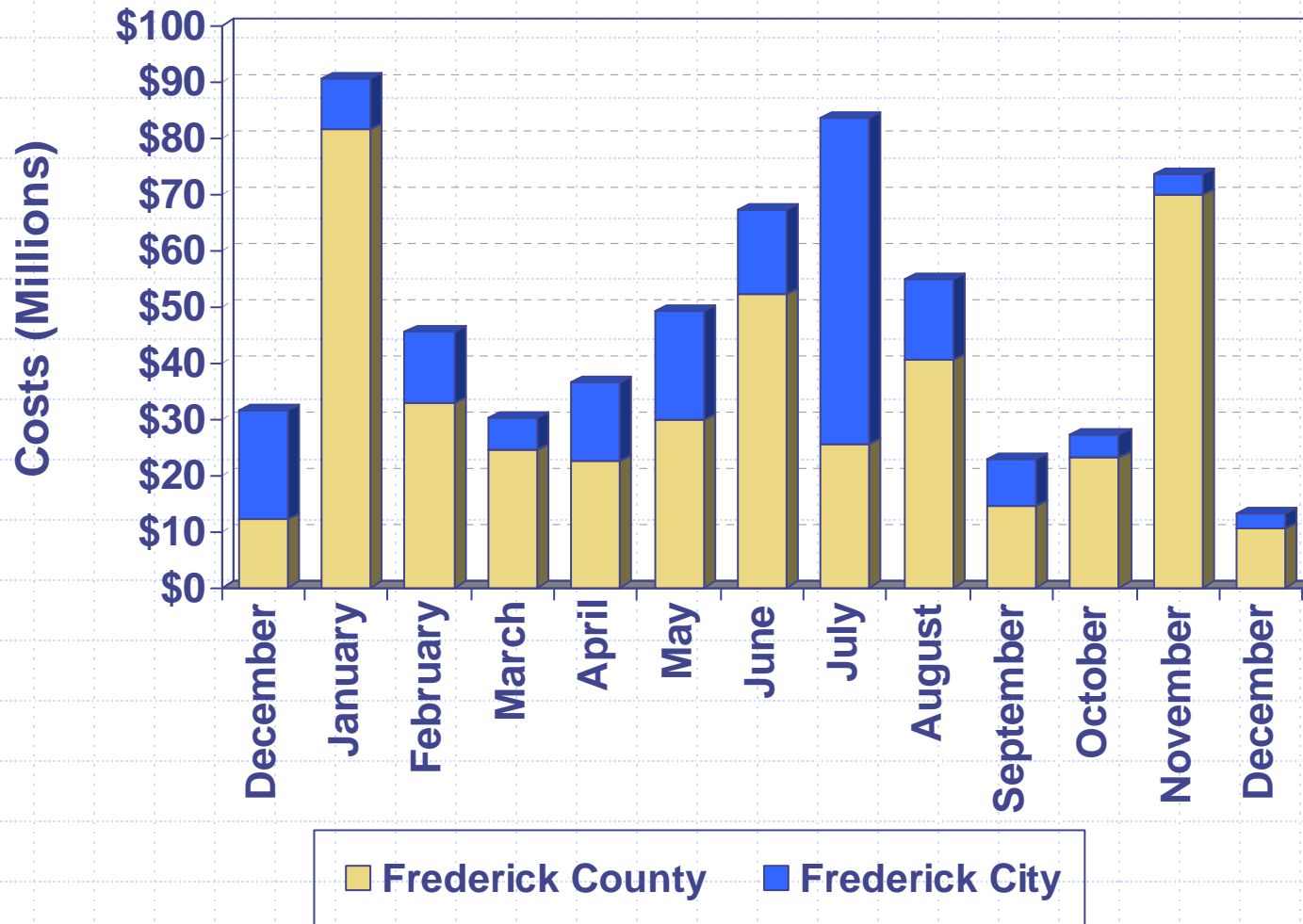
# Housing Unit Construction

## Comparison of Current Month and YTD Units

<b>Current Month – December</b>			
<b>Year</b>	<b>County</b>	<b>City</b>	<b>Total</b>
2007	28	2	30
2006	28	63	91
2005	59	88	147
2004	109	6	115
2003	119	56	175
5 Year Avg.	69	43	112

<b>YTD – January - December</b>			
<b>Year</b>	<b>County</b>	<b>City</b>	<b>Total</b>
2007	789	265	1,054
2006	888	396	1,284
2005	1,480	771	2,251
2004	1,075	495	1,570
2003	1,394	530	1,924
5 Year Avg.	1,125	491	1,617

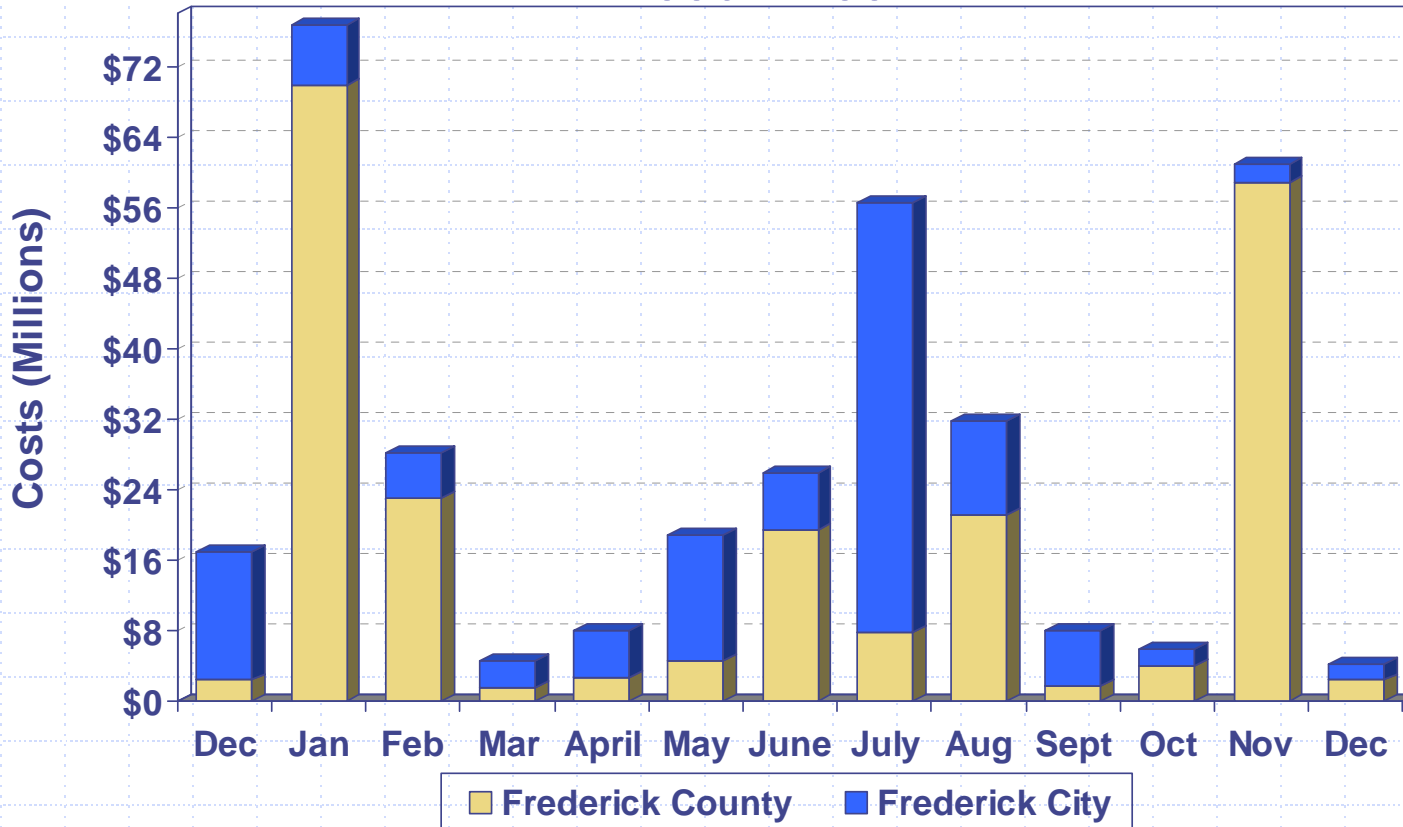
# Construction Costs 2006 - 2007



Costs based on issued permits

# Commercial Construction Costs

2006 – 2007



Frederick County
  Frederick City

Costs based on issued permits

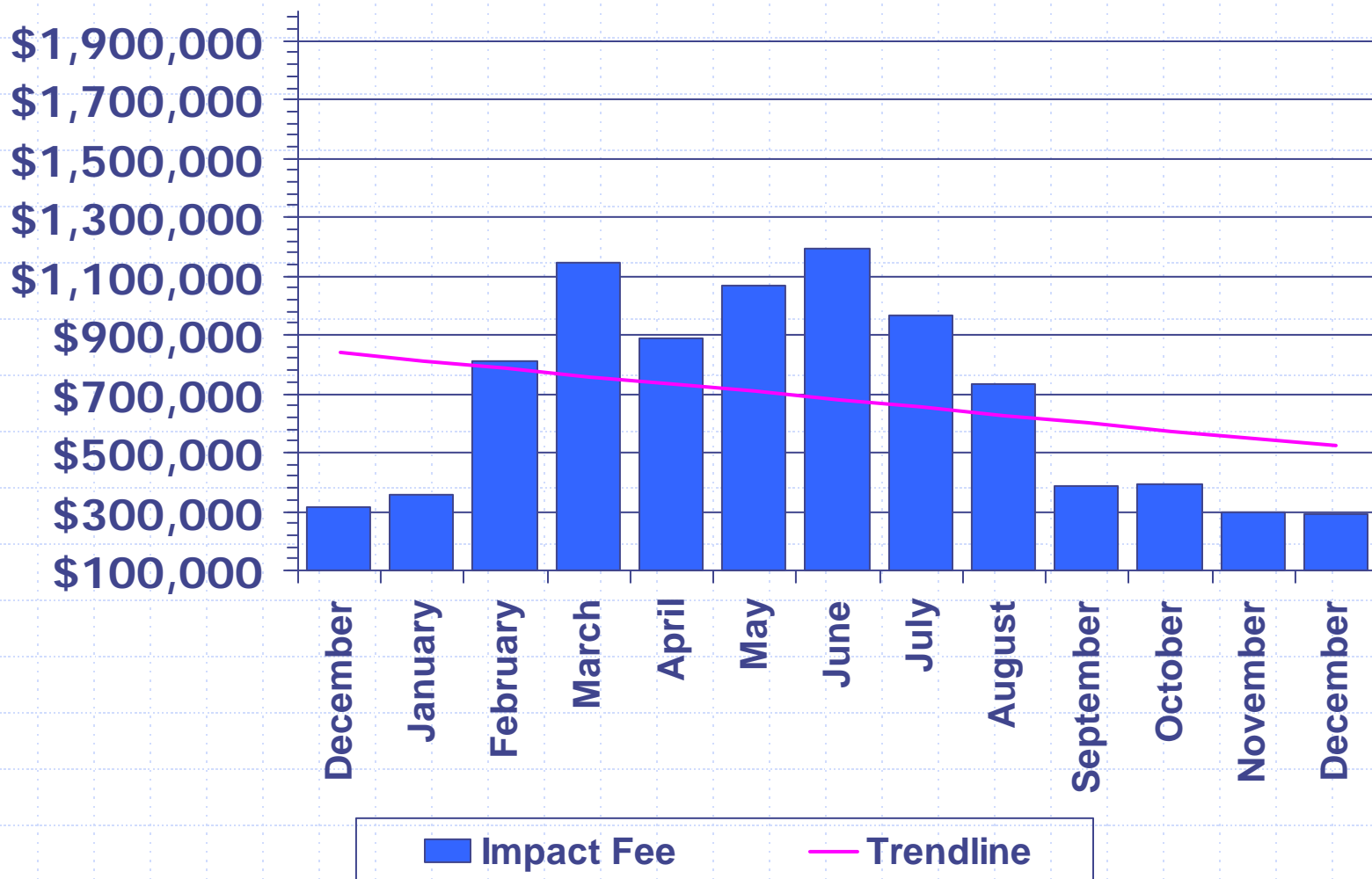
**Cost per month:**

- Dec. 2006 City – Frederick’s Rental Properties (\$6.8M) and Winchester Hall Alterations (\$2.6M)
- Jan. 2007 Co. – Oakdale High School (\$58M)
- Feb. 2007 Co. – Mount St. Mary’s University (\$9.5M) and Conley Farm Corporate Center Shell (\$4M)
- May 2007 City – BP Solar Alteration (\$12M)
- June 2007 Co. – Wellington I, LLC Foundation & Core (\$6.7M) & Old Chapel Corporation Core Buildings (\$6.4M)
- July 2007 City – Medimmune Inc. Alteration (\$47.9M)
- Aug. 2007 Co. - County Transfer Station (\$13M); City - BP Solar Alter. (\$9M)
- Nov. 2007 Co. – New Design Road Treatment Plant (\$51M)

# Excise Tax 2006 - 2007



# Impact Fee 2006 - 2007



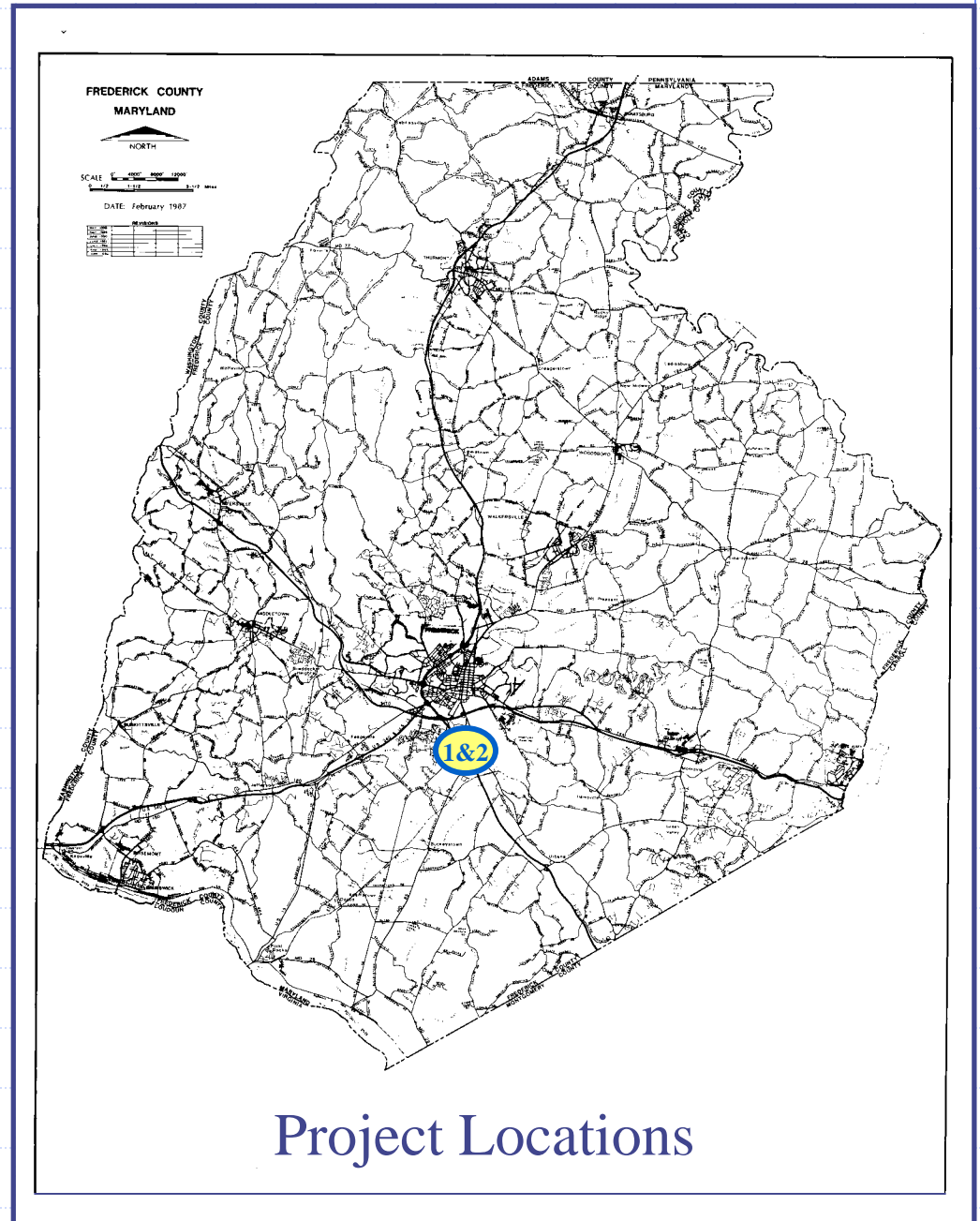



# LIST OF PROJECTS

(expected to be presented  
at upcoming FcPc meeting)

## County Projects

1. Westview South B. F. Saul Co.,  
Lot 101
2. Westview South B. F. Saul Co.,  
Lots 102, 103, 105, 106 & 107

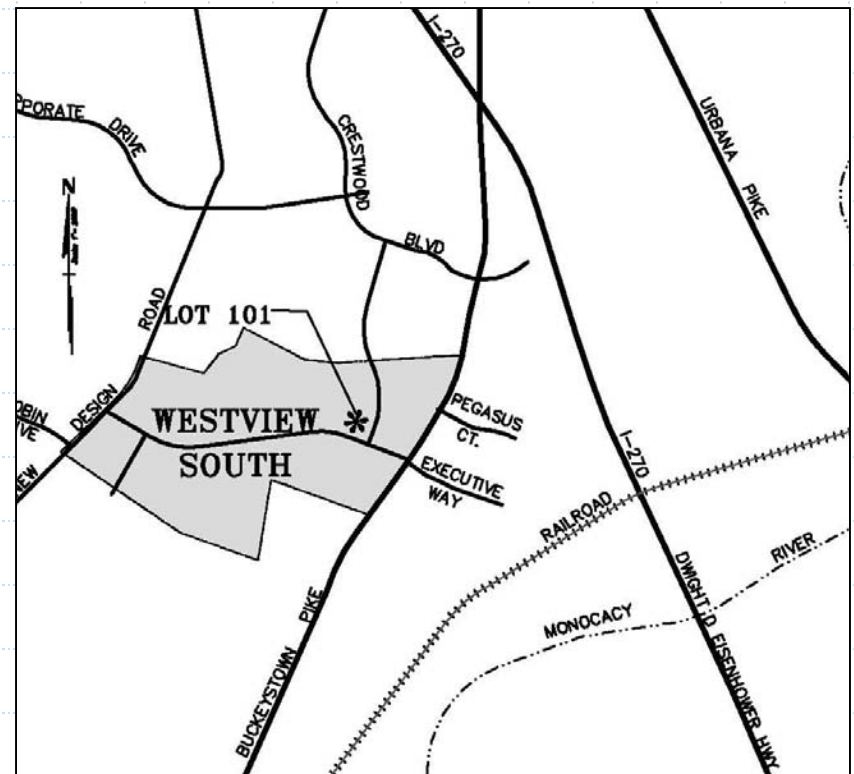




# County Projects

# Westview South, B. F. Saul Company, Lot 101

- ❑ Request: Site Plan Approval
- ❑ Location: Northwest quadrant of Westview Dr. and Executive Way
- ❑ Total Use: One 135-room hotel (88,500 sq. ft.)
- ❑ Zoned: MXD
- ❑ Applicant: Saul Holdings Limited Partnership
- ❑ Engineer: Rodgers Consulting



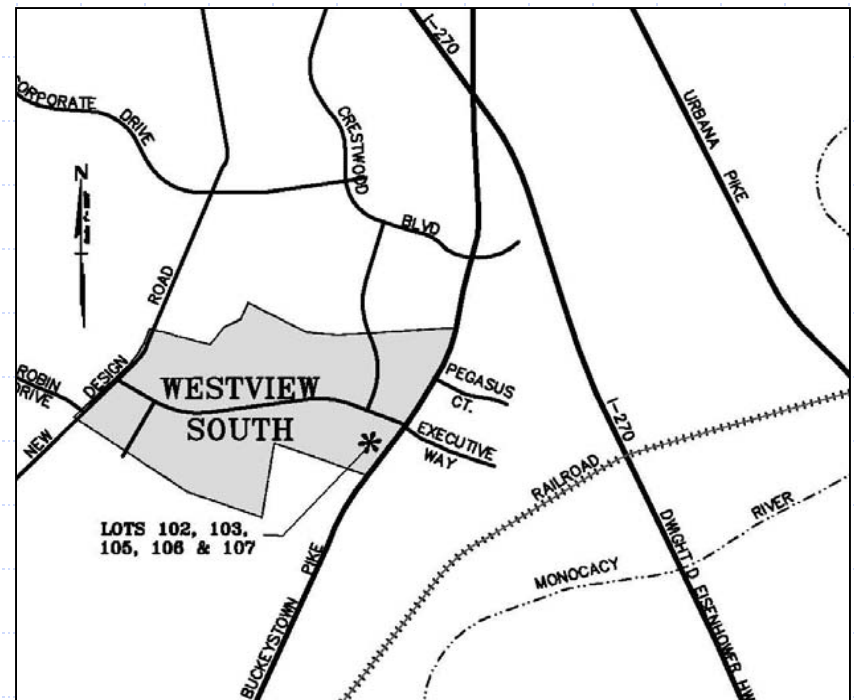
# Westview South, B. F. Saul Company, Lot 101



# Westview South, B. F. Saul Company

## Lots 102, 103, 105, 106 & 107

- Request: Site Plan Approval
- Location: Northwest quadrant of Westview Dr. and Executive Way
- Total Use: 5 lots totaling 164,950 sq. ft.
  - Lot 102- retail (10,950 sq. ft.); Lot 103- 114-room hotel (90,000 sq. ft.);
  - Lot 105- office (54,000 sq.ft.) & Lots 106/107- 2 restaurants (5,000 sq.ft. ea.)
- Zoned: MXD
- Applicant: Saul Holdings Limited Partnership
- Engineer: Rodgers Consulting



# Westview South, B. F. Saul Company, Lots 102, 103, 105, 106 & 107

