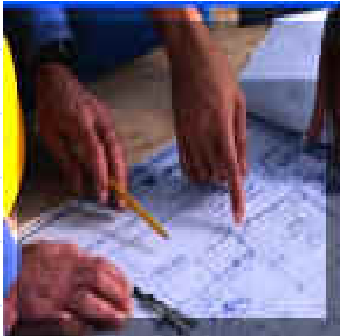


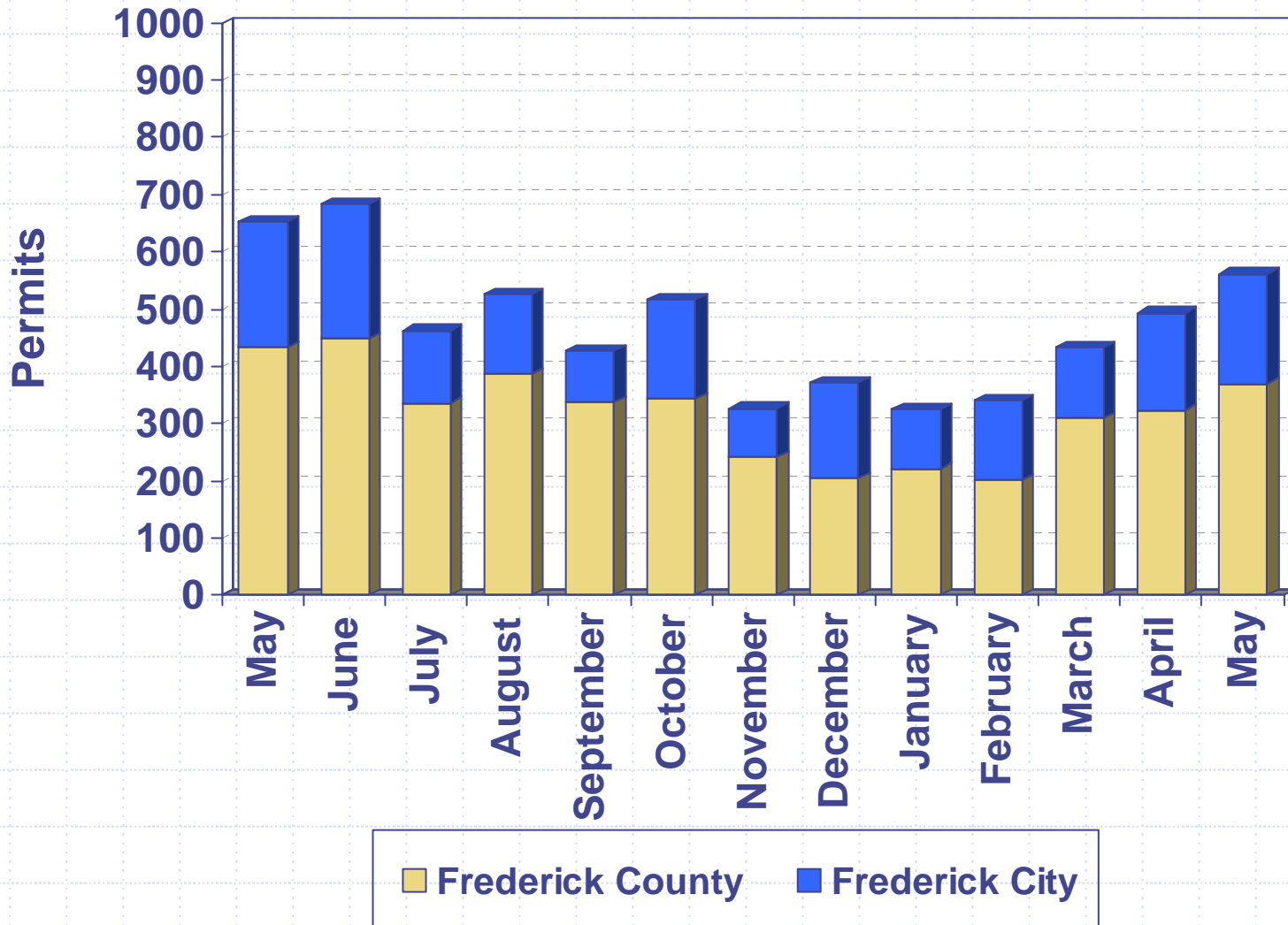


Division of Permitting and Development Review

- July 12, 2007
- Director's Development Data/Project Presentation to the County Commissioners

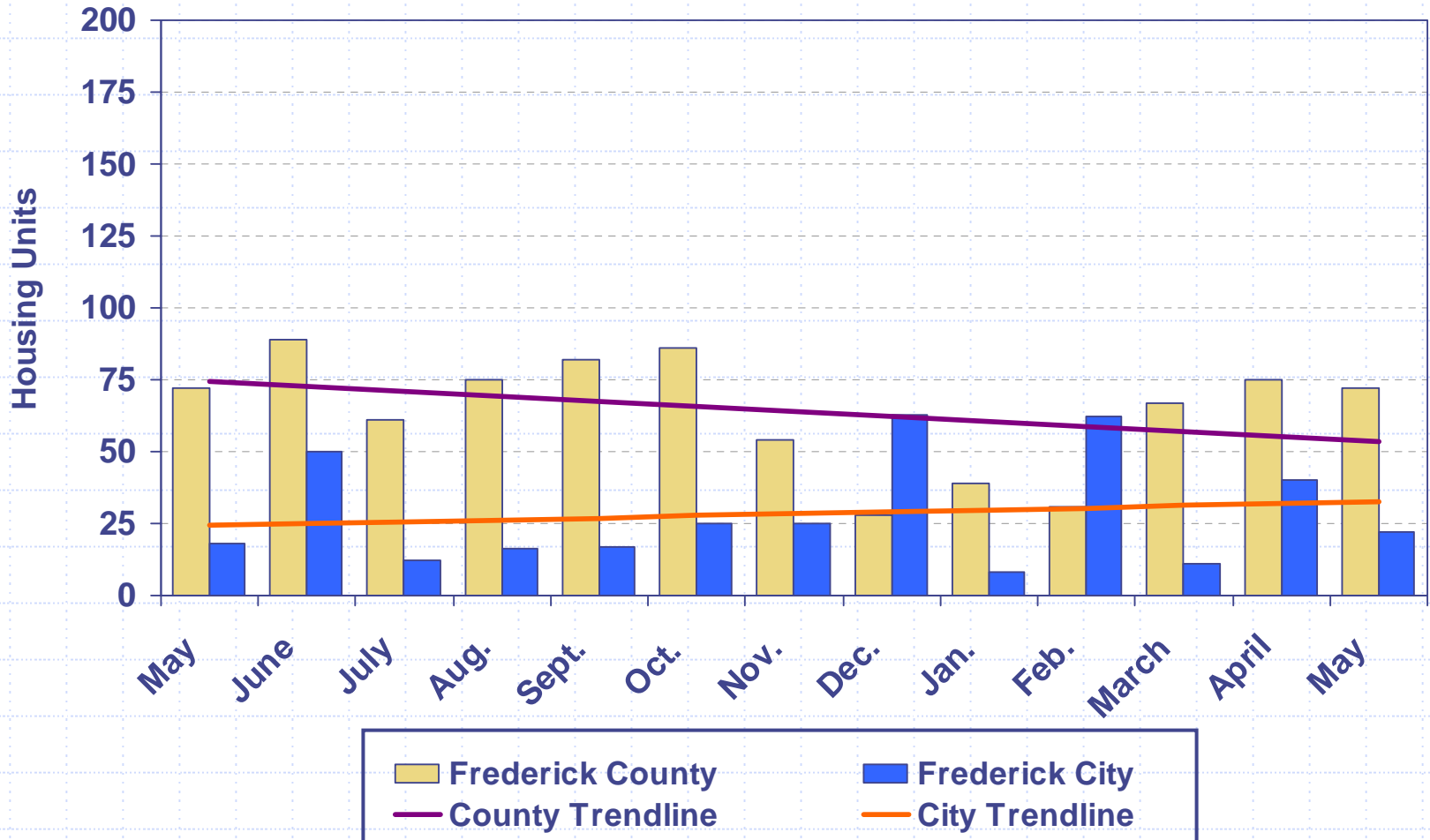


Building Permits Issued 2006 - 2007



Housing Unit Construction 2006 - 2007

Housing units based on issued permits



12 Month Total (June 2006 – May 2007): 1,110 units

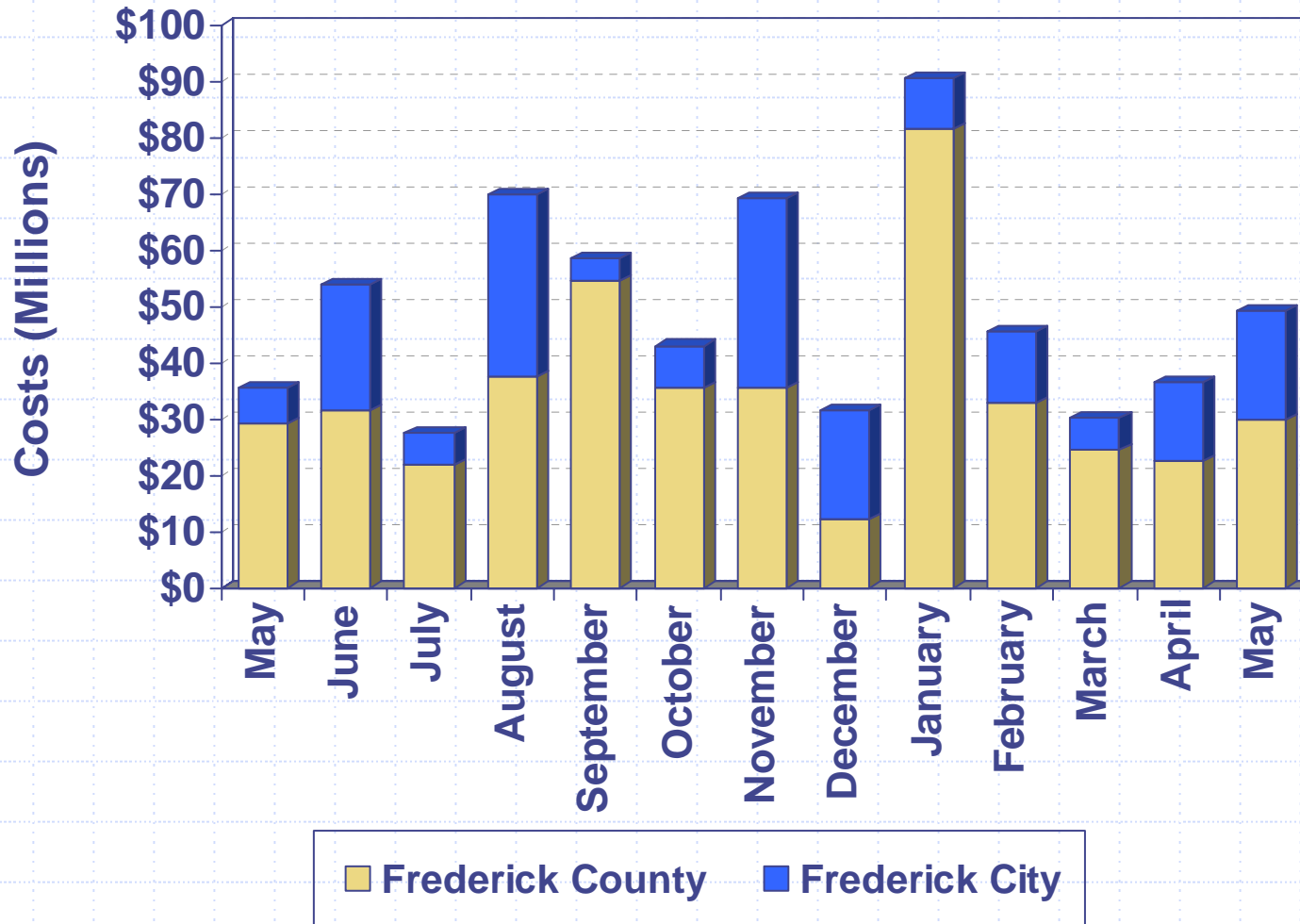
Housing Unit Construction

Comparison of Current Month and YTD Units

Current Month – May			
Year	County	City	Total
2007	72	22	94
2006	72	18	90
2005	148	17	165
2004	94	42	136
2003	145	229	374
5 Year Avg.	106	66	172

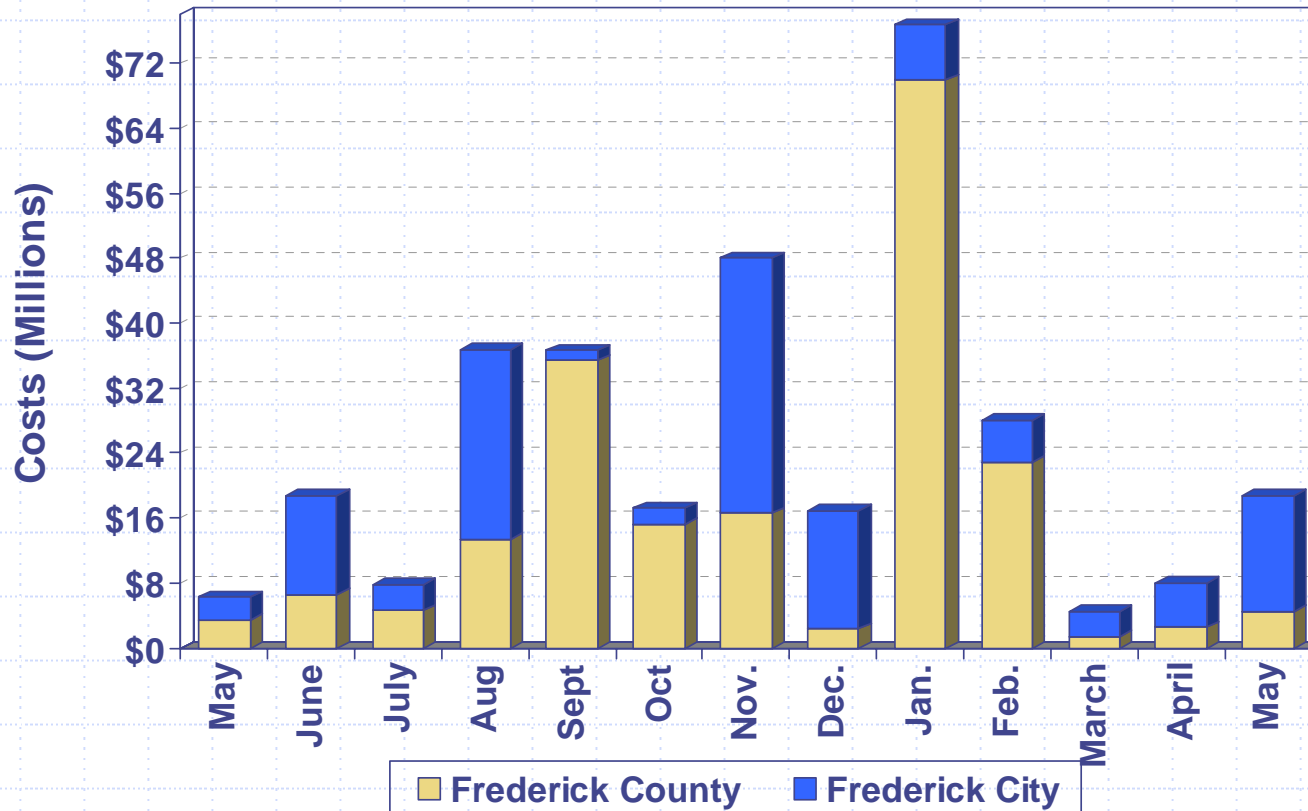
YTD – January - May			
Year	County	City	Total
2007	284	143	427
2006	413	188	601
2005	549	182	731
2004	481	205	686
2003	555	241	796
5 Year Avg.	456	192	648

Construction Costs 2006 - 2007



Costs based on issued permits

Commercial Construction Costs 2006 – 2007



Cost per month:

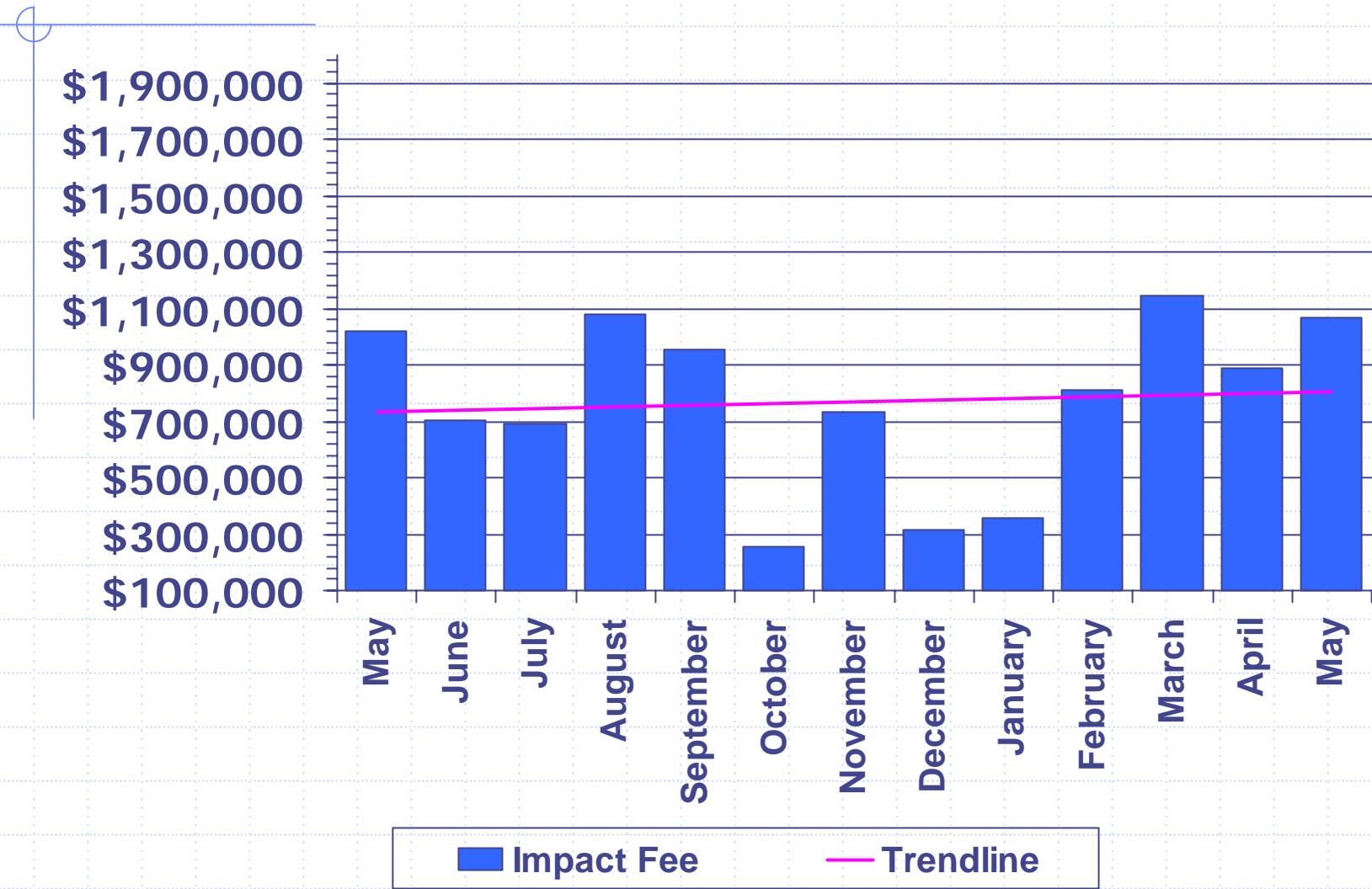
Costs based on issued permits

- June 2006 City – Riverside flex-commercial warehouse space (\$2.3M, \$2.4M, \$2M) & Riverside Bakery (\$1.9M)
- Aug. 2006 Co. – First Baptist Church of Fred. (\$4.3M) & Holy Family Catholic Church (\$2.7M); City – Ace Printing (\$17.4M)
- Sept. 2006 Co. – Brunswick Waste Water Treatment Plan Addition (\$11M), Thurmont Regional Library (\$7M), New Market Elementary School Addition (\$7M) & Alteration (\$2M)
- Oct. 2006 Co. – St. Peter Church Addition (\$6.9M) & Thurmont Primary School Addition (\$4.5M)
- Nov. 2006 Co. – Tuscarora High School (\$8.8M); City – Medimmune Inc. (\$26M)
- Dec. 2006 City – Frederick’s Rental Properties (\$6.8M) and Winchester Hall Alterations (\$2.6M)
- Jan. 2007 Co. – Oakdale High School (\$58M)
- Feb. 2007 Co. – Mount St. Mary’s University (\$9.5M) and Conley Farm Corporate Center Shell (\$4M)
- May 2007 City – BP Solar alteration (\$12M)

Excise Tax 2006 - 2007



Impact Fee 2006 - 2007

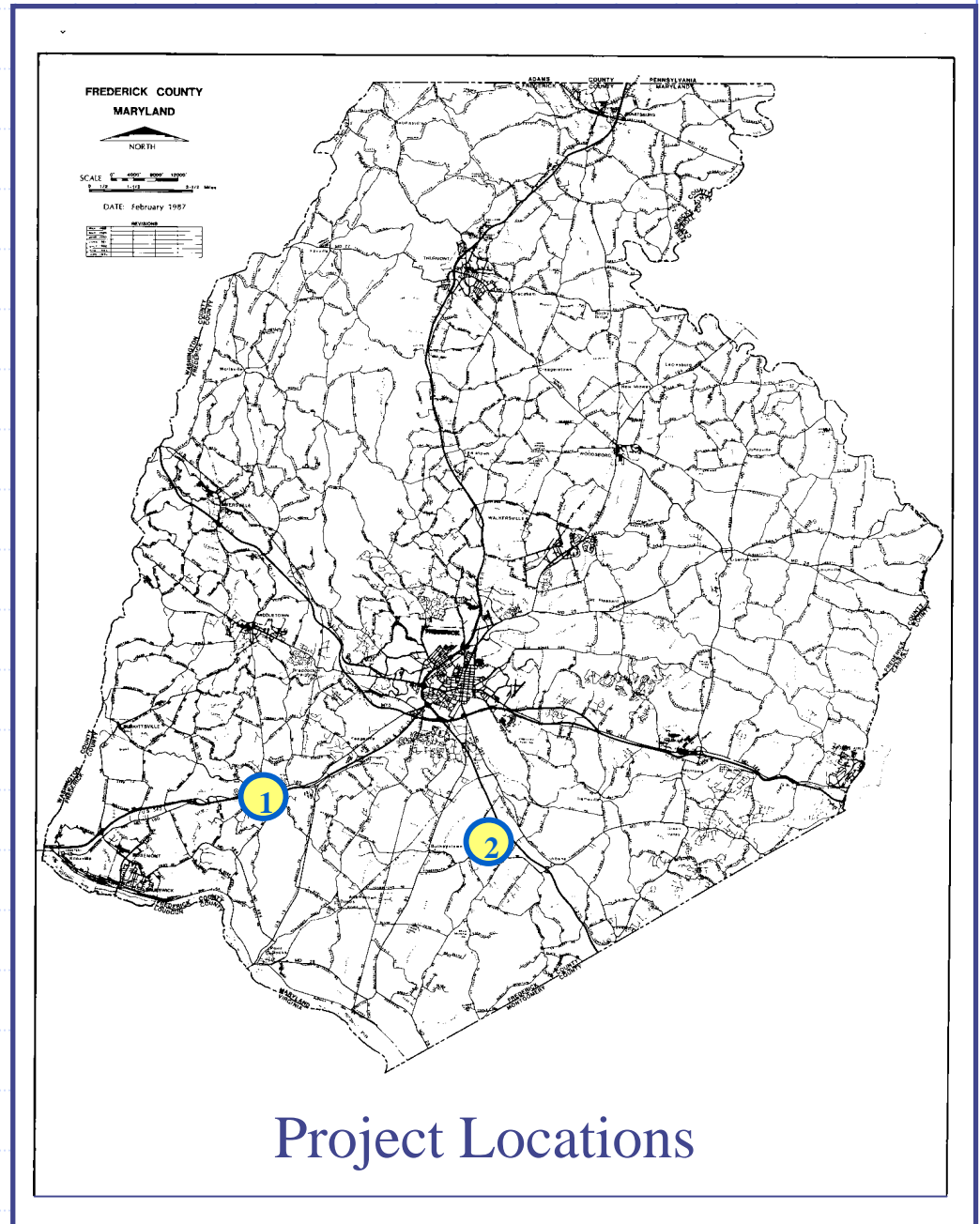


LIST OF PROJECTS

(expected to be presented
at upcoming FcPc meeting)

County Projects

1. Clark Welding
2. Hope Hill United Methodist Church



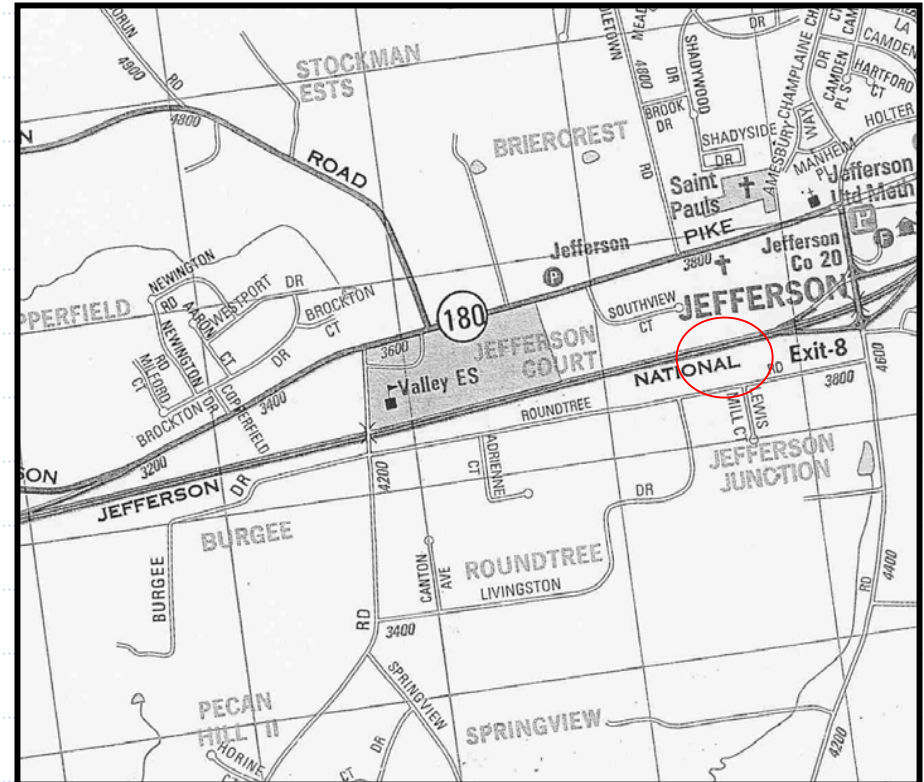
Project Locations



County Projects

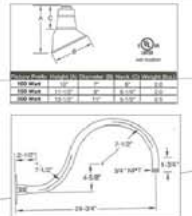
Clark Welding

- ❑ Request: Site Plan Approval
- ❑ Location: North side of Roundtree Road, opposite Lewis Mill Road
- ❑ Total Use: 25,050 sq. ft. building
- ❑ Zoned: General Commercial
- ❑ Applicant: Clark Welding and Fabrication Company
- ❑ Engineer: B&R Design Group, Inc.



Clark Welding

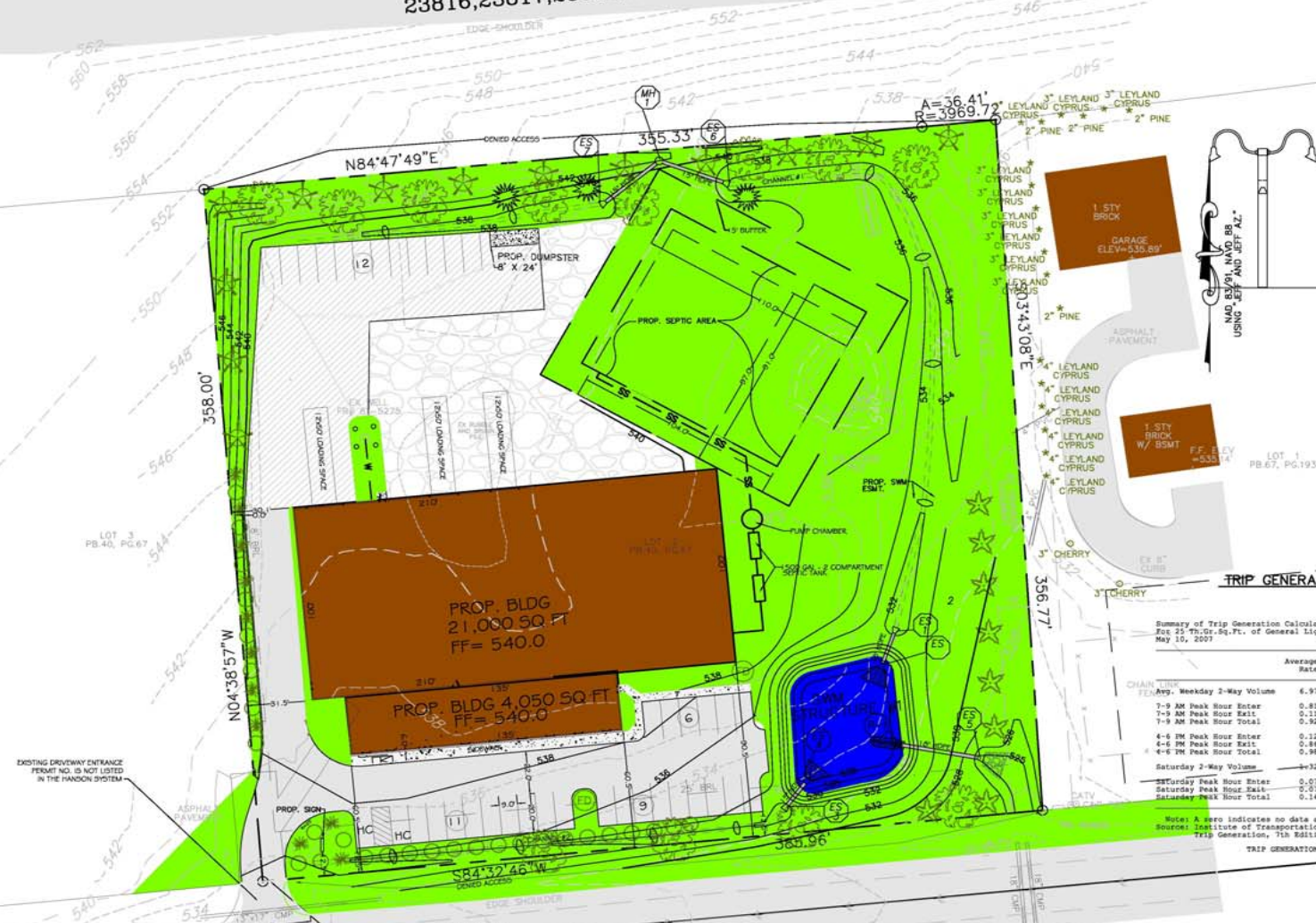
US ROUTE 340
 (300' R/W)
 M.S.R.C. R/W PLATS
 23816, 23817, 23818, 23820, 23821



SITE SIGN LIGHTING DETAIL
 N.T.S.



SITE SIGN DETAIL
 N.T.S.



TRIP GENERATION REPORT

Summary of Trip Generation Calculation
 For 237,000 Sq.Ft. of General Light Industrial
 May 10, 2007

	Average Rate	Standard Deviation	Adjustment Factor	Driveway Volume
CHAIN TRAIL				
AVG. Weekday 2-Way Volume	4.97	4.24	1.00	174
7-9 AM Peak Hour Enter	0.81	0.00	1.00	20
7-9 AM Peak Hour Exit	0.11	0.00	1.00	3
7-9 AM Peak Hour Total	0.92	1.07	1.00	23
4-6 PM Peak Hour Enter	0.12	0.00	1.00	3
4-6 PM Peak Hour Exit	0.86	0.00	1.00	22
4-6 PM Peak Hour Total	0.98	1.16	1.00	25
Saturday 2-Way Volume	4.32	3.48	1.00	33
Saturday Peak Hour Enter	0.07	0.00	1.00	2
Saturday Peak Hour Exit	0.07	0.00	1.00	2
Saturday Peak Hour Total	0.14	0.41	1.00	4

Notes: A zero indicates no data available.
 Source: Institute of Transportation Engineers
 Trip Generation, 7th Edition, 2003.

TRIP GENERATION BY MICROTRANS

ZONING G-C
 ZONING R-3
 ROUNDTREE ROAD
 (80' R/W)

EXISTING DRIVEWAY ENTRANCE
 PERMIT NO. IS NOT LISTED
 IN THE HANDON SYSTEM

SEE-IN TO EX. PAVEMENT SHALL BE SHAW CUT.

LOT 3
 PB.40, PG.67

LOT 1
 PB.67, PG.193

Hope Hill United Methodist Church

- ❑ Request: Site Plan Approval
- ❑ Location: South side of Fingerboard Road, East of Baker Valley Road
- ❑ Total Use: 3,780 sq. ft. addition to existing fellowship hall
- ❑ Zoned: Agricultural
- ❑ Applicant: Hope Hill United Methodist Church
- ❑ Engineer: Van Mar Associates, Inc.

