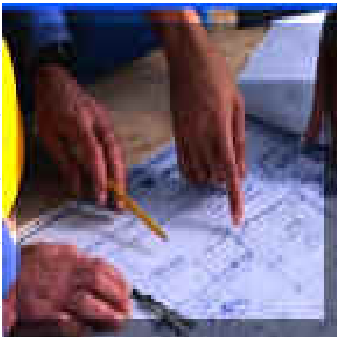


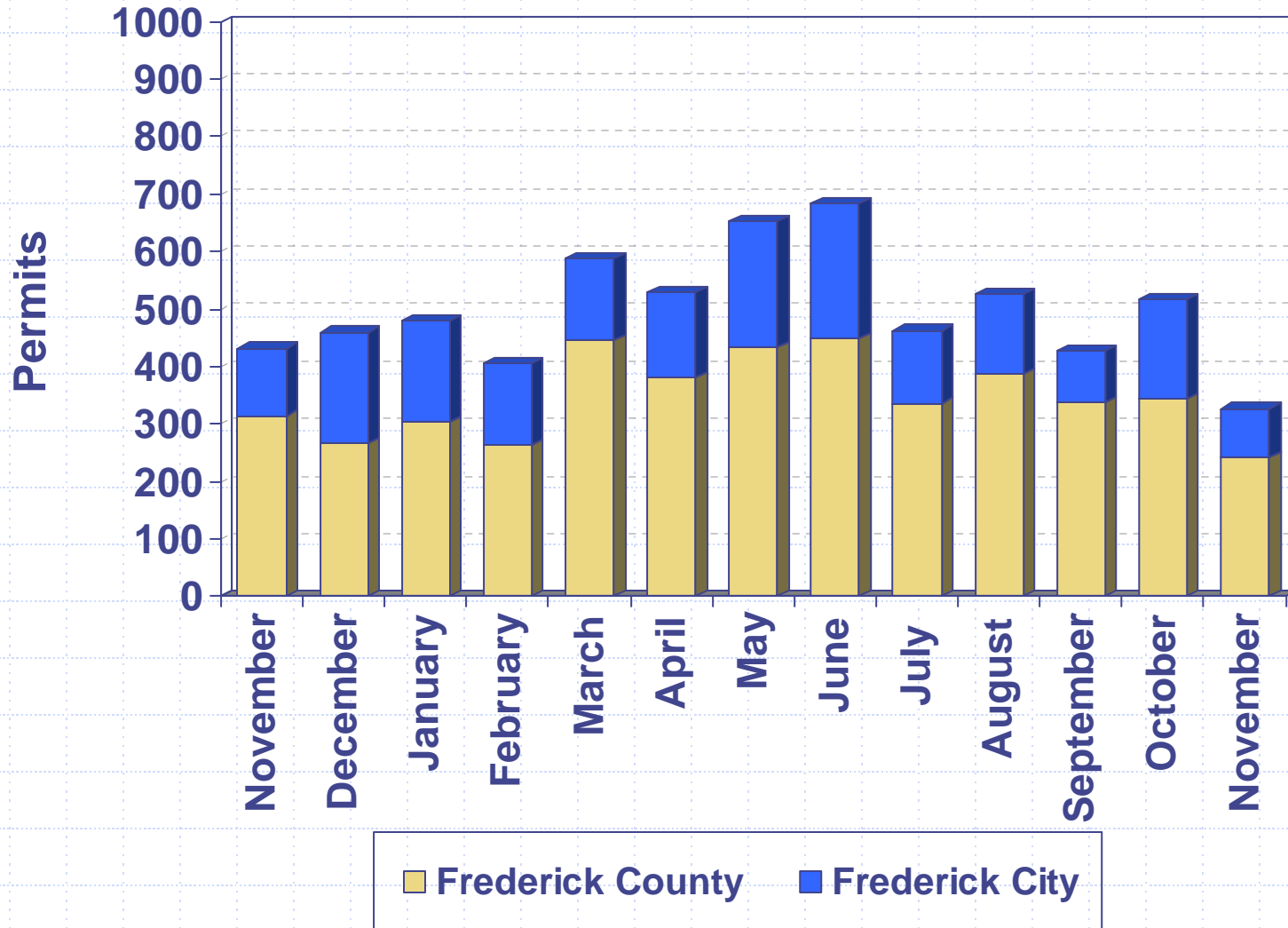


Division of Permitting and Development Review

- December 21, 2006
- Director's Development Data/Project Presentation to the County Commissioners

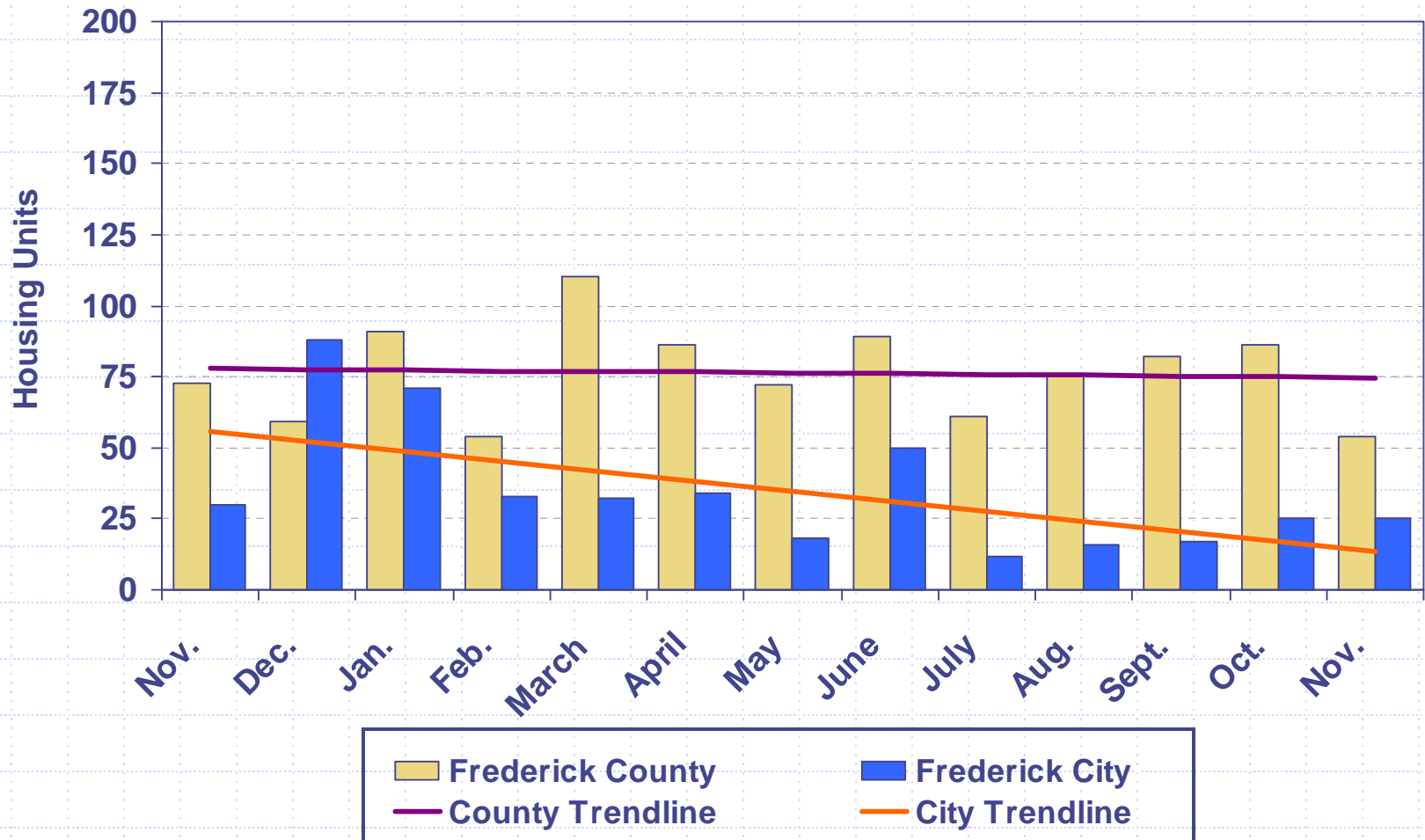


Building Permits Issued 2005 - 2006



Housing Unit Construction 2005 - 2006

Housing units based on issued permits



12 Month Total (December 2005 – November 2006): 1340 units

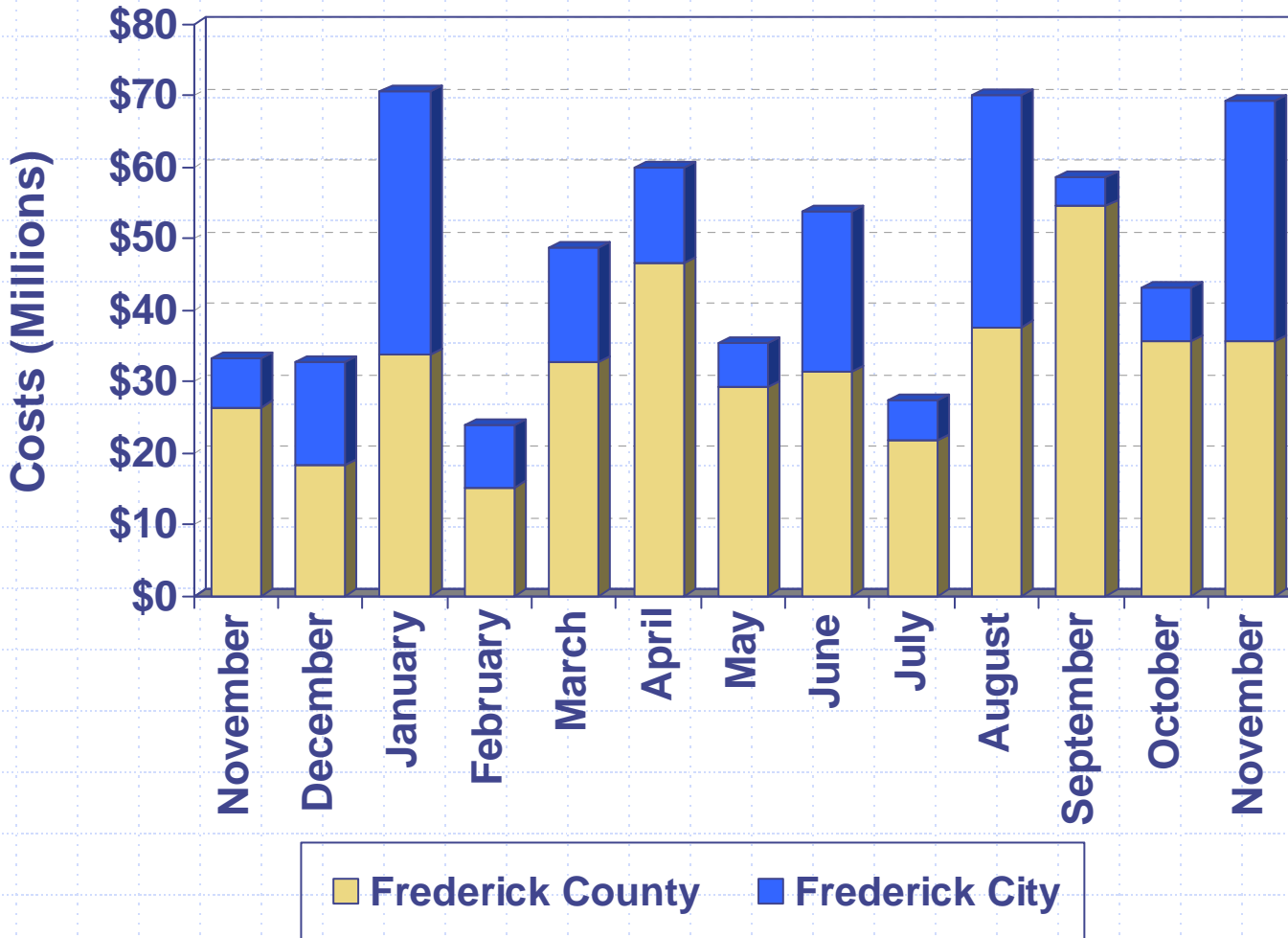
Housing Unit Construction

Comparison of Current Month and YTD Units

Current Month – November			
Year	County	City	Total
2006	54	25	79
2005	73	30	103
2004	63	19	82
2003	73	63	136
2002	101	0	101
5 Year Avg.	73	27	100

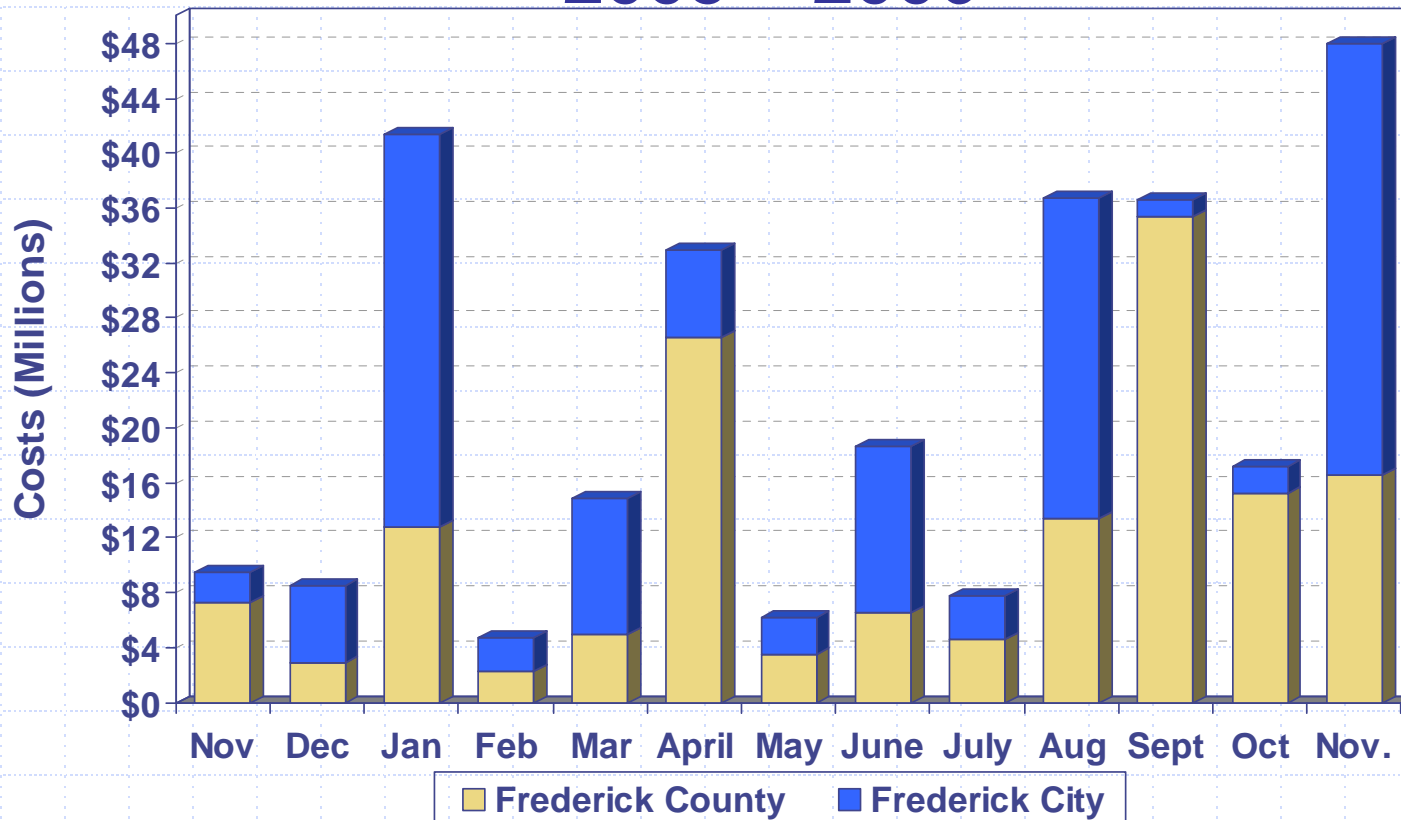
YTD - January – November			
Year	County	City	Total
2006	860	333	1,193
2005	1,421	683	2,104
2004	966	489	1,455
2003	1,275	474	1,749
2002	1,455	41	1,496
5 Year Avg.	1,195	404	1,599

Construction Costs 2005 - 2006



Costs based on issued permits

Commercial Construction Costs 2005 – 2006



Cost per month:

Costs based on issued permits

January 2006 Co. – Frederick Nissan (\$3M) & Weis Market (\$3.3M); City – ALDI Inc. Food Warehouse (\$27.8M)

March 2006 City – Creekside Plaza (\$6.3M)

April 2006 Co. – Hilton Garden Inn (\$9.3M), Super Giant (\$5M) & Country Meadows Retirement Community Addition (\$4M)

June 2006 City – Riverside flex-commercial warehouse space (\$2.3M, \$2.4M, \$2M) & Riverside Bakery (\$1.9M)

Aug. 2006 Co. – First Baptist Church of Fred. (\$4.3M) & Holy Family Catholic Church (\$2.7M); City – Ace Printing (\$17.4M)

Sept. 2006 Co. – Brunswick Waste Water Treatment Plan Addition (\$11M), Thurmont Regional Library (\$7M),
New Market Elementary School Addition (\$7M) & Alteration (\$2M)

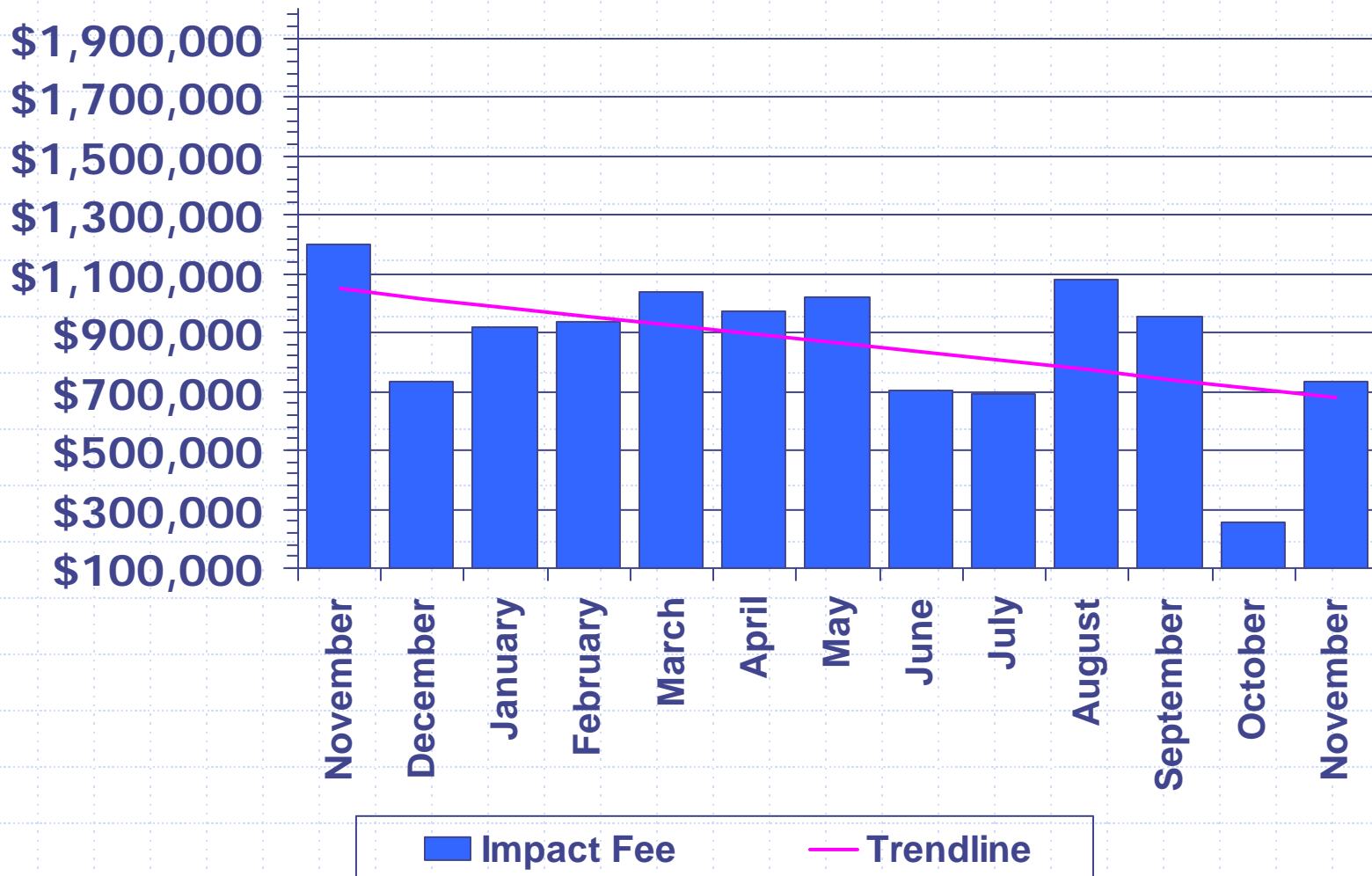
Oct. 2006 Co. – St. Peter Church Addition (\$6.9M) & Thurmont Primary School Addition (\$4.5M)

Nov. 2006 Co. – Tuscarora High School (\$8.8M); City – Medimmune Inc. (\$26M)

Excise Tax 2005 - 2006



Impact Fee 2005 - 2006

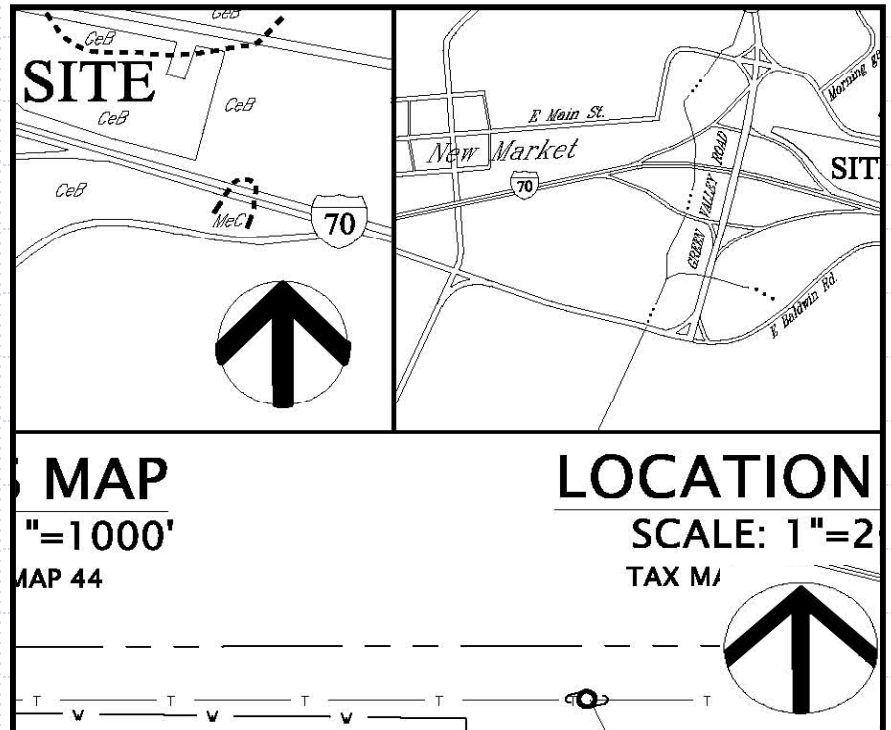




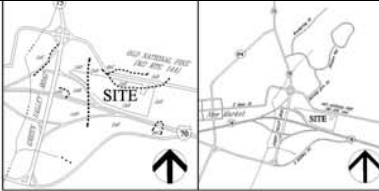
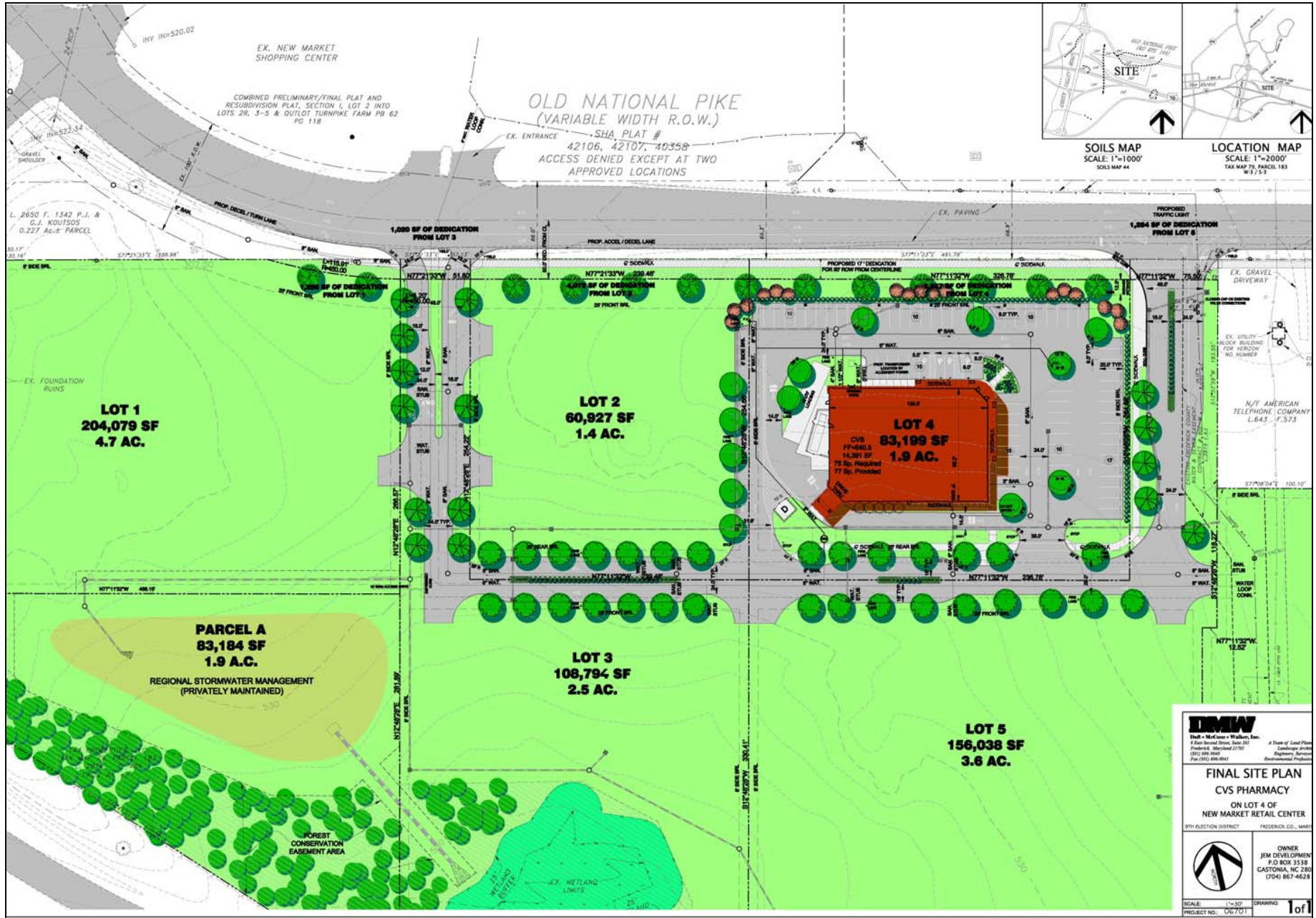
County Projects

CVS Pharmacy New Market Retail Center

- ❑ Request: CVS Pharmacy New Market Retail Center
- ❑ Location: South side of Old National Pike, approx. 1,500 feet east of Route 75
- ❑ Total Use: One CVS Pharmacy – 14,391 sq. ft.
- ❑ Zoned: General Commercial
- ❑ Applicant: JEM Development
- ❑ Engineer: DMW



CVS Pharmacy, New Market Retail Center



SOILS MAP
SCALE: 1"=1000'
SOILS MAP 44

LOCATION MAP
SCALE: 1"=2000'
TAX MAP 79, PARCEL 183
W 3 / 2 3

DMW
David M. Williams, Inc.
A Division of Land Plans
1000 West Street, Suite 200
Friedberg, Maryland 21797
(301) 888-8800
Fax (301) 488-0811
A Division of Land Plans
Engineering Services
Equipment Services
Mechanical Engineering

FINAL SITE PLAN
CVS PHARMACY
ON LOT 4 OF
NEW MARKET RETAIL CENTER

3TH ELECTION DISTRICT FREDERICK CO., MARYLAND
OWNER
JEM DEVELOPMENT
P.O. BOX 3338
CASTONIA, NC 280
(704) 867-4628



SCALE: 1"=30'
PROJECT NO.: 06701 DRAWING: 1 of 1