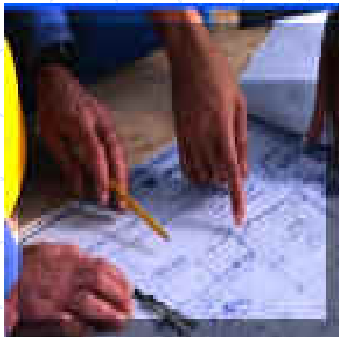


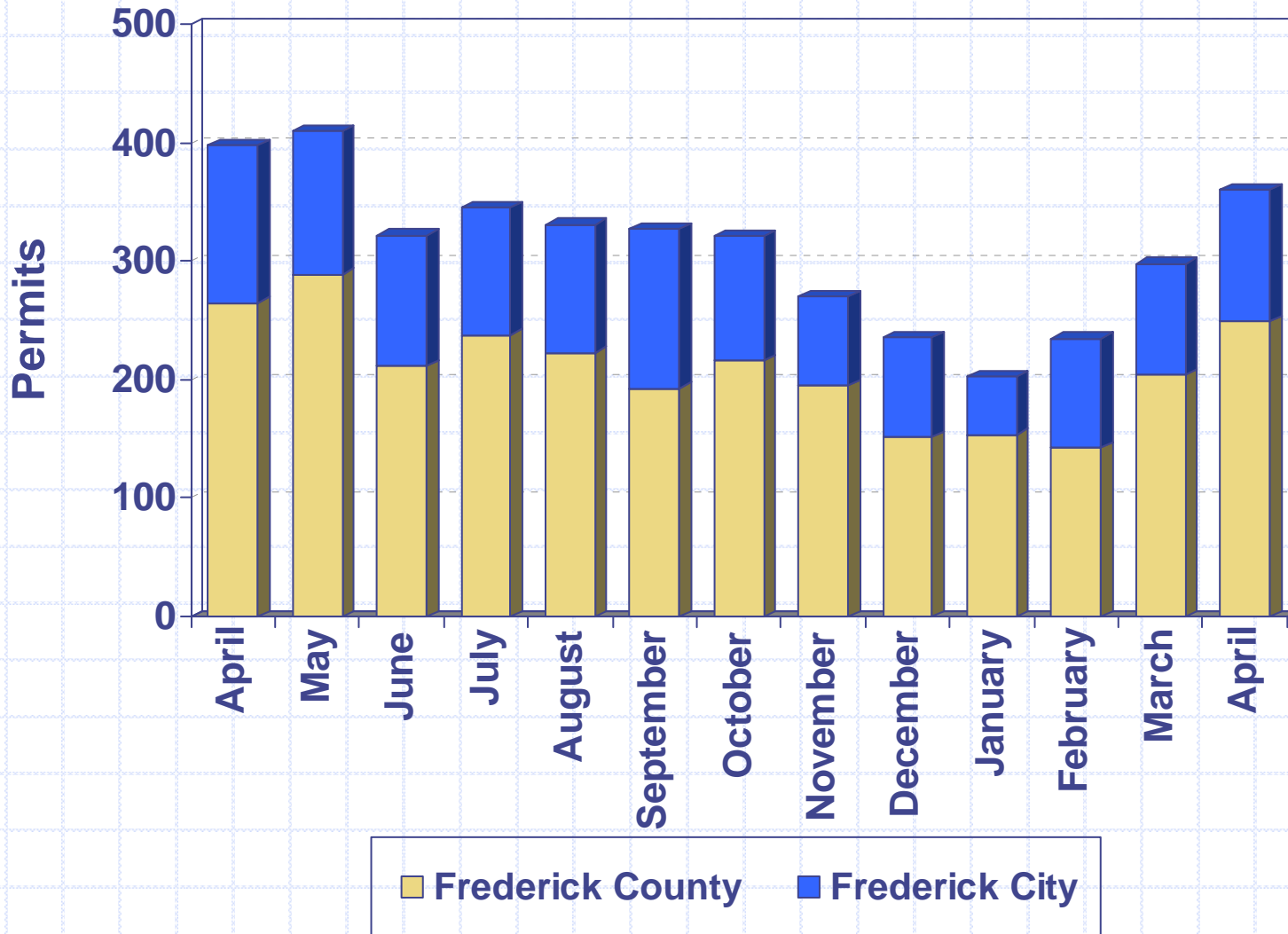


# Division of Permitting and Development Review

- June 4, 2009
- Director's Development Data/Project Presentation to the County Commissioners

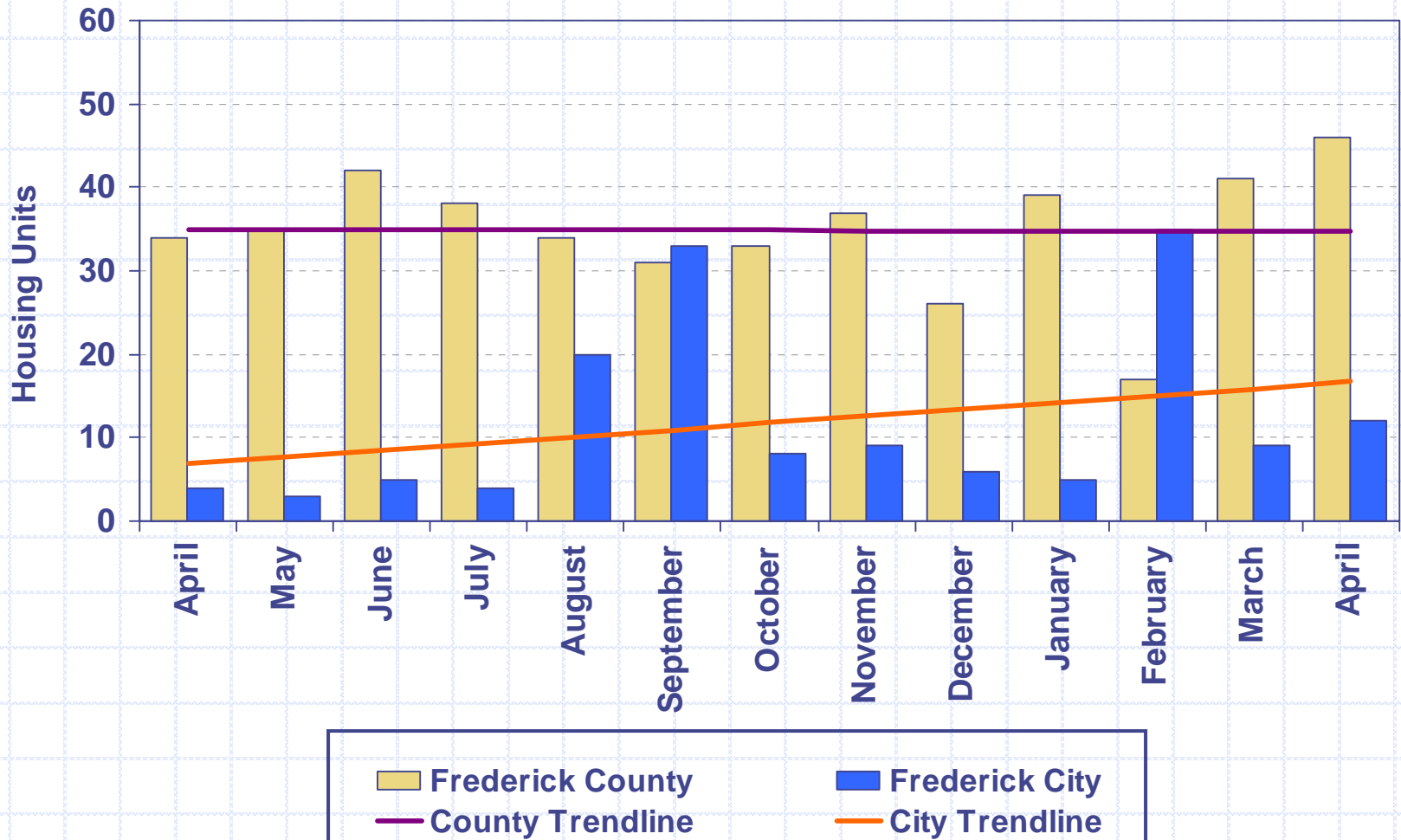


# Building Permits Issued 2008 - 2009



# Housing Unit Construction 2008 - 2009

Housing units based on issued permits



12 Month Total (May 2008 – April 2009): 568 units

# Housing Unit Construction

## Comparison of Current Month and YTD Units

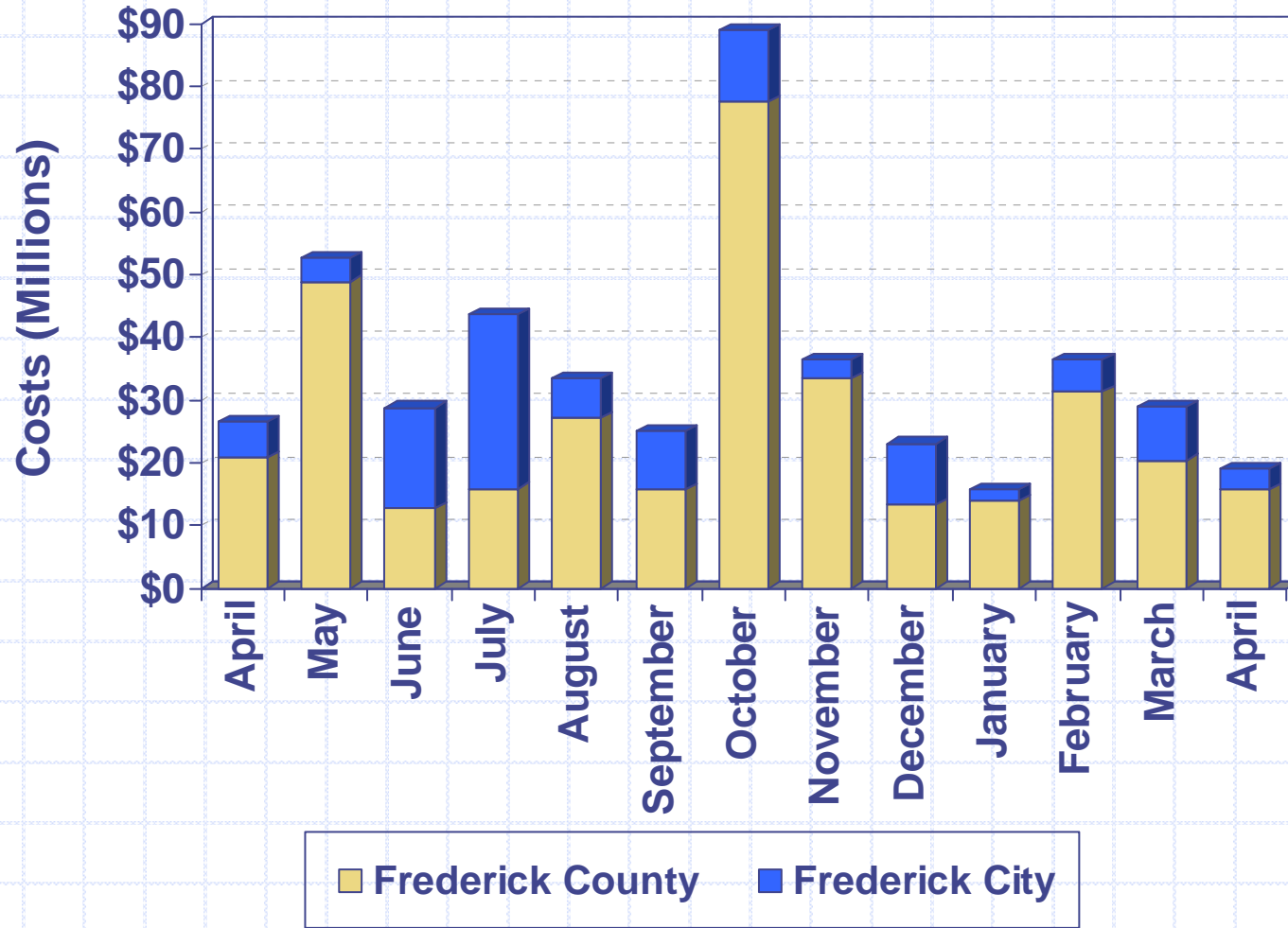
### Current Month - April

Year	County	City	Total
2009	46	12	58
2008	34	4	38
2007	75	40	115
2006	86	34	120
2005	82	20	102
5 Year Avg.	65	22	87

### YTD – April

Year	County	City	Total
2009	143	61	204
2008	155	43	198
2007	212	121	333
2006	341	170	511
2005	401	165	566
5 Year Avg.	250	112	362

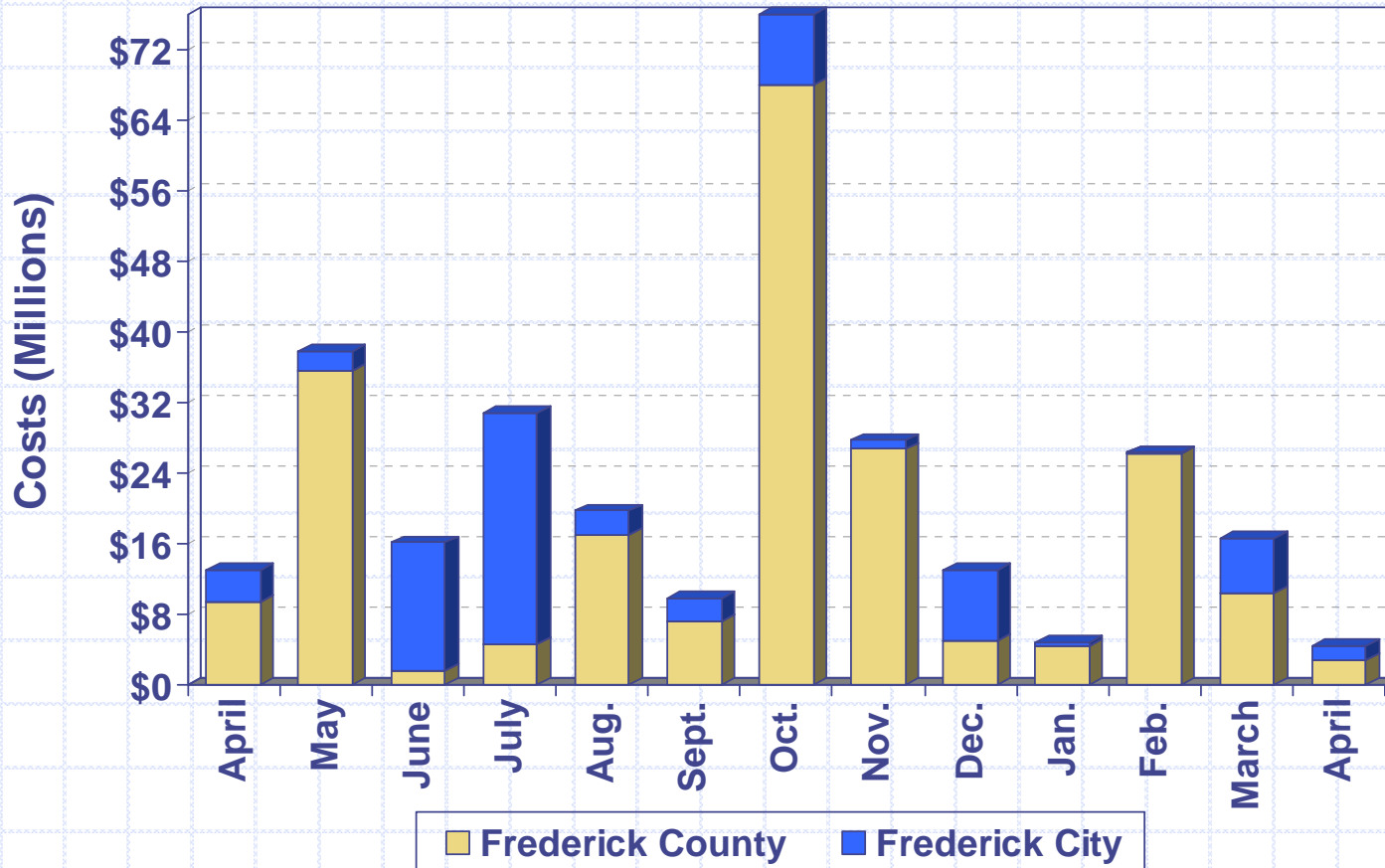
# Construction Costs 2008 - 2009



Costs based on issued permits

# Commercial Construction Costs

## 2008 - 2009



### Cost per month:

Costs based on issued permits

May 2008 Co. – Mount Saint Mary’s University building alterations (\$24M)

June 2008 City – West Frederick Middle School new construction (\$13.9M)

July 2008 City – Frederick Community College classrooms/student center (\$18M)

Aug. 2008 Co. – Ben’s Branch Pumping Station (\$4.4M) & Shockley Honda addition (\$4M)

Oct. 2008 Co. – Linganore High School new construction (\$59.2M)

Nov. 2008 Co. – Lonza Walkersville, Inc. new construction (\$20M)

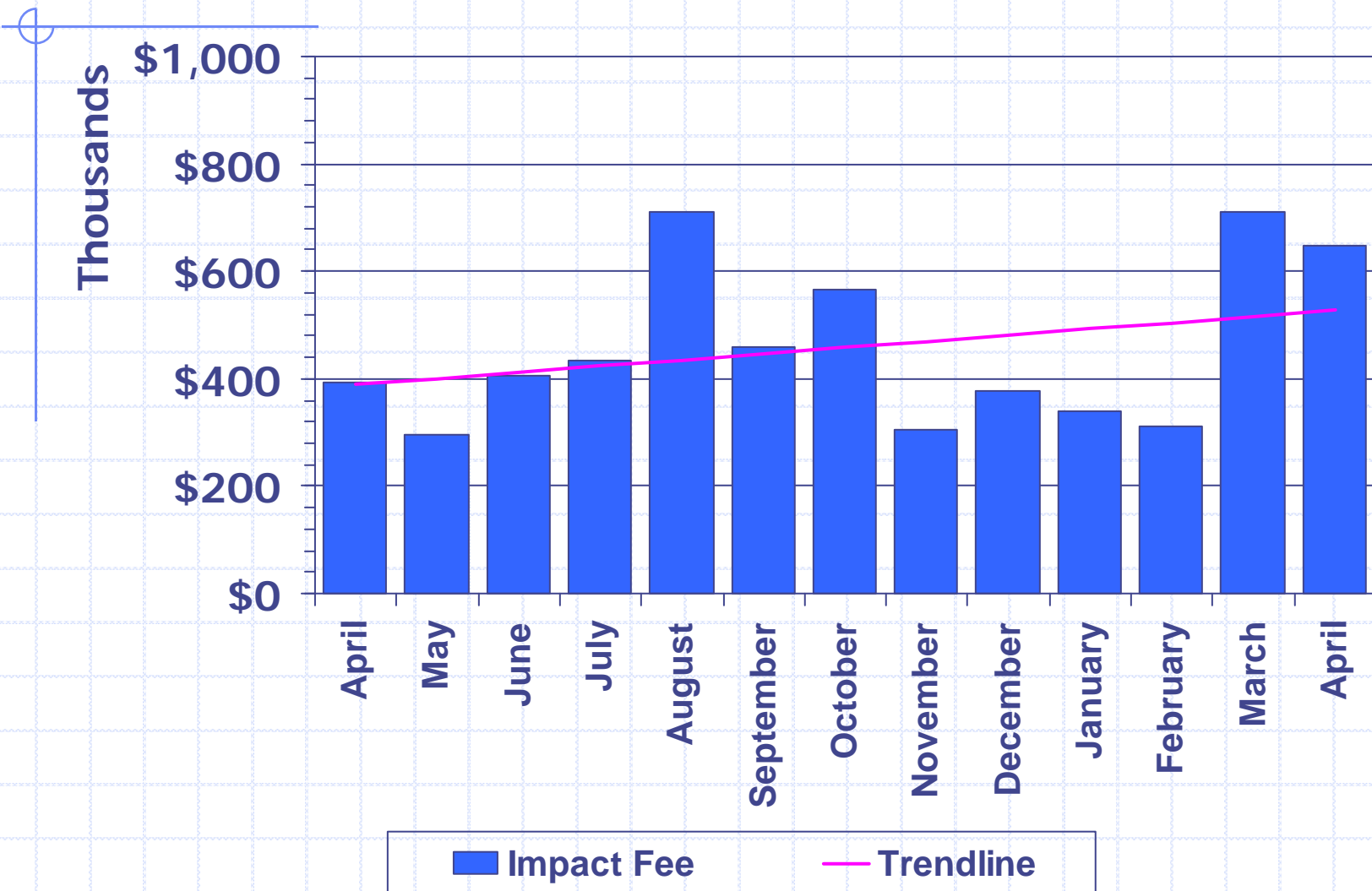
Feb. 2009 Co. – Costco new construction (\$19M)

March 2009 Co. – Lonza Walkersville, Inc. alteration (\$5M)

# Excise Tax 2008 - 2009



# Impact Fee 2008 - 2009



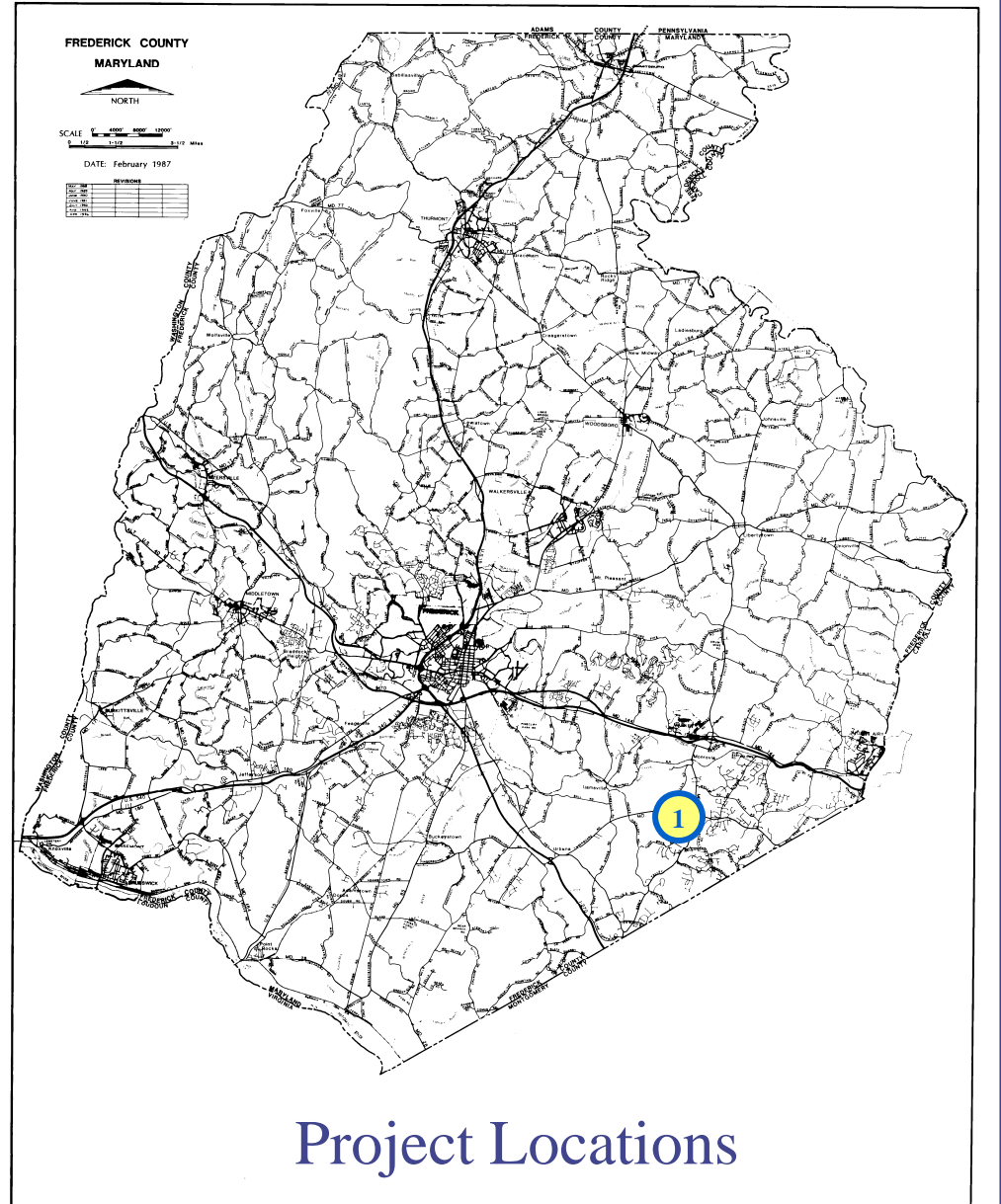


# LIST OF PROJECTS

(expected to be presented  
at upcoming FcPc meeting)

## County Projects

1. Hebron Christian Church

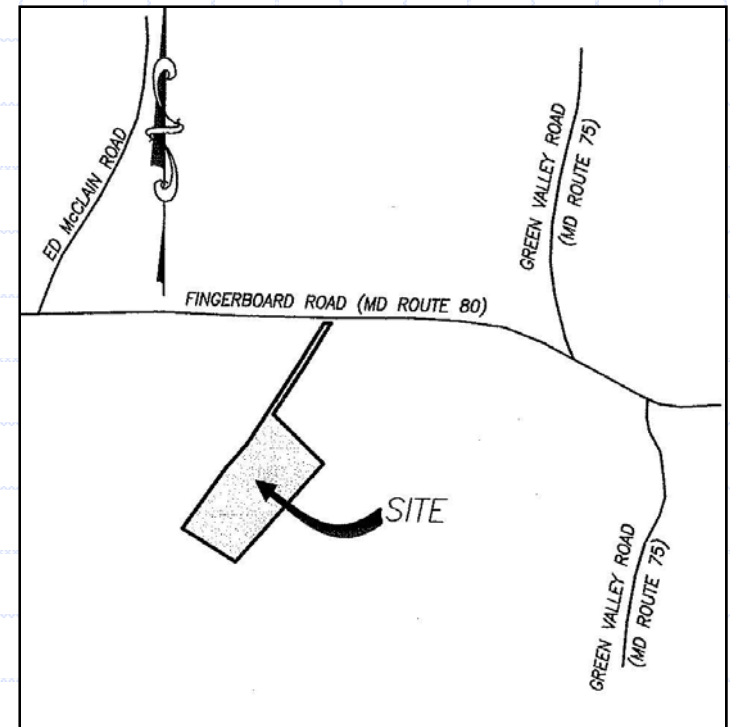




# County Projects

# Hebron Christian Church

- ❑ Request: Site Plan Approval
- ❑ Location: South side of Route 80, ½ mile west of Route 75
- ❑ Total Use: 15,844 sq. ft. church
- ❑ Zoned: AG
- ❑ Applicant: Hebron Christian Church
- ❑ Engineer: Harris, Smariga & Associates, Inc.



# Hebron Christian Church



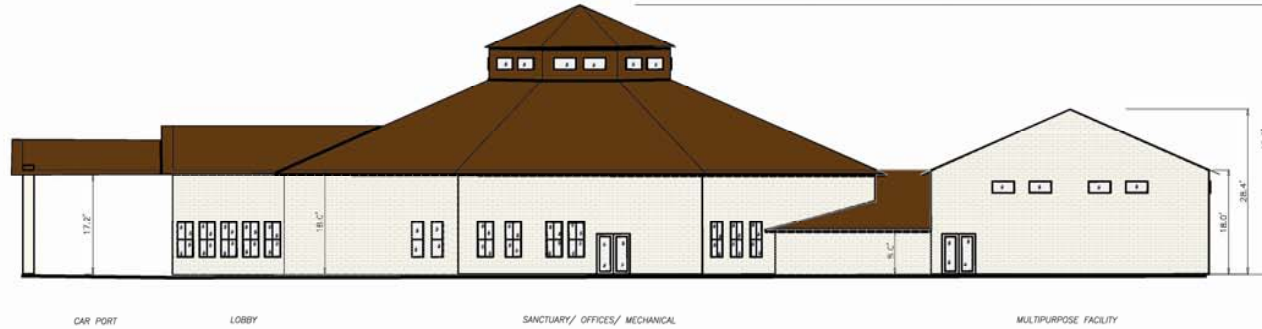
DATE	REVISIONS

**PRELIMINARY SITE PLAN**  
**HEBRON CHRISTIAN CHURCH**  
 LOT 2, SECTION 1, JESSE ACRES  
 P.B. 79 PG. 193  
 L. 5767 F. 49  
 SITUATED ON FINGERBOARD ROAD (MD ROUTE 80)  
 NEW MARKET ELECTION DISTRICT NO. 9  
 FREDERICK COUNTY, MARYLAND  
 SCALE: 1" = 30' OCTOBER, 2008  
 SHEET 2 OF 7

**OWNERS:**  
 HEBRON CHRISTIAN CHURCH  
 C/O PASTOR LEON DOUSON  
 13112 MANOR DRIVE  
 MOUNT AIRY, MARYLAND 21771  
 410-598-3988

**YANMAR ASSOCIATES, INC.**  
 ENGINEERS, ARCHITECTS, PLANNERS  
 1001 S.W. 20TH AVENUE, SUITE 200  
 MIAMI, FLORIDA 33135

# Hebron Christian Church



NORTH ELEVATION  
SCALE: 1" = 10'



EAST-(FRONT) ELEVATION  
SCALE: 1" = 10'

MATERIALS:  
ROOF: ASPHALT SHINGLES  
SIDING: BRICK OR SPLIT FACE CMU



United Church Structures  
A Proud Member of Explorer Building Group

DATE	REVISIONS

BUILDING ELEVATION PLAN  
**HEBRON CHRISTIAN CHURCH**  
LOT 2, SECTION 1, JESSE ACRES  
P.B. 79 PG. 153  
L. 5767 F. 49

SITUATED ON FINGERBOARD ROAD (MD ROUTE 80)  
NEW MARKET ELECTION DISTRICT No. 9  
FREDERICK COUNTY, MARYLAND  
SCALE: 1" = 10' FEBRUARY, 2009  
SHEET 7 OF 7

OWNERS:  
HEBRON CHRISTIAN CHURCH  
C/O PASTOR LEON DODSON  
13112 MANOR DRIVE  
MOUNTAIN VIEW, MARYLAND 21771