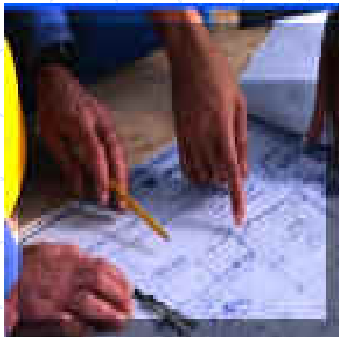


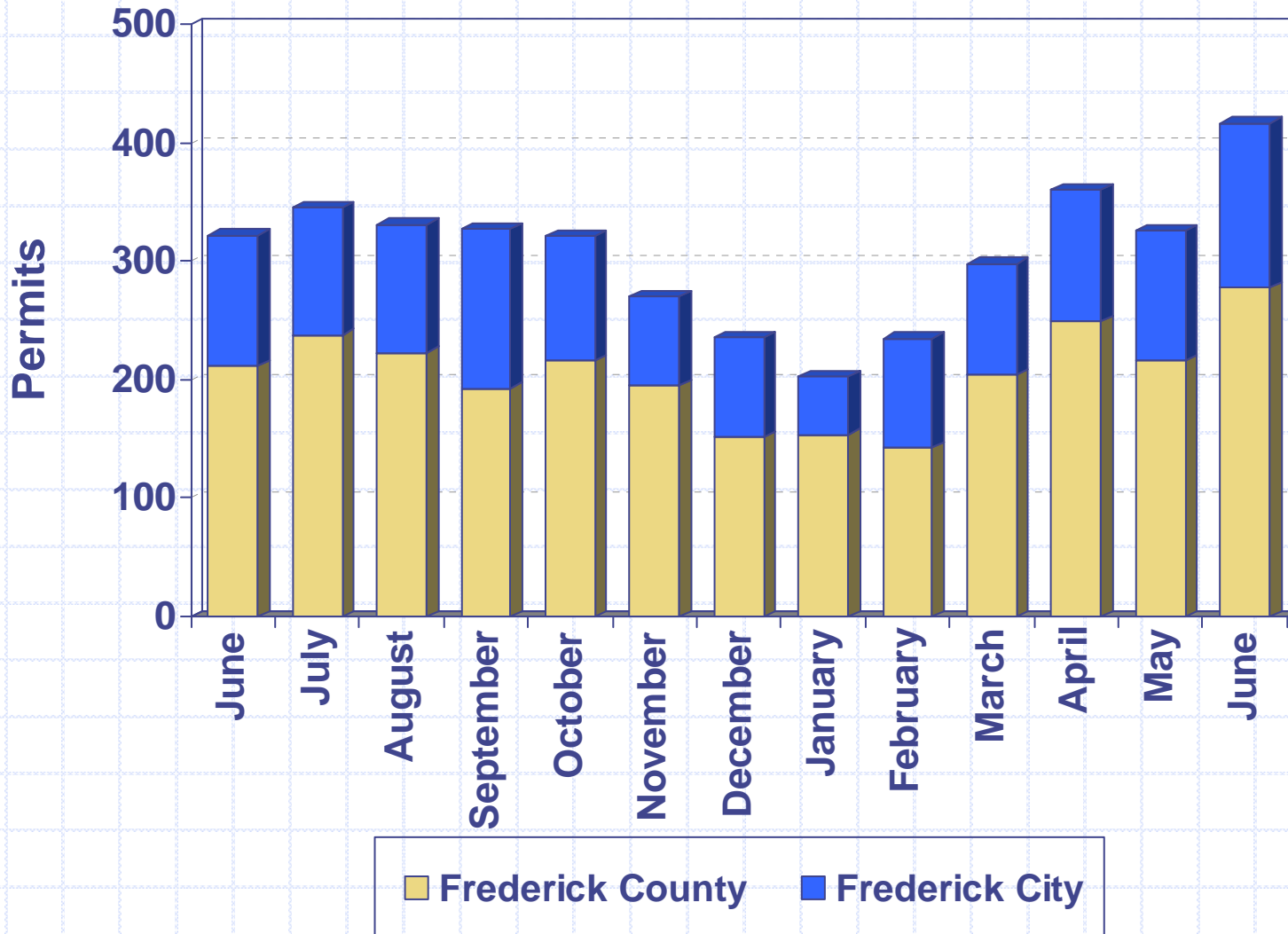


Division of Permitting and Development Review

- August 6, 2009
- Director's Development Data/Project Presentation to the County Commissioners

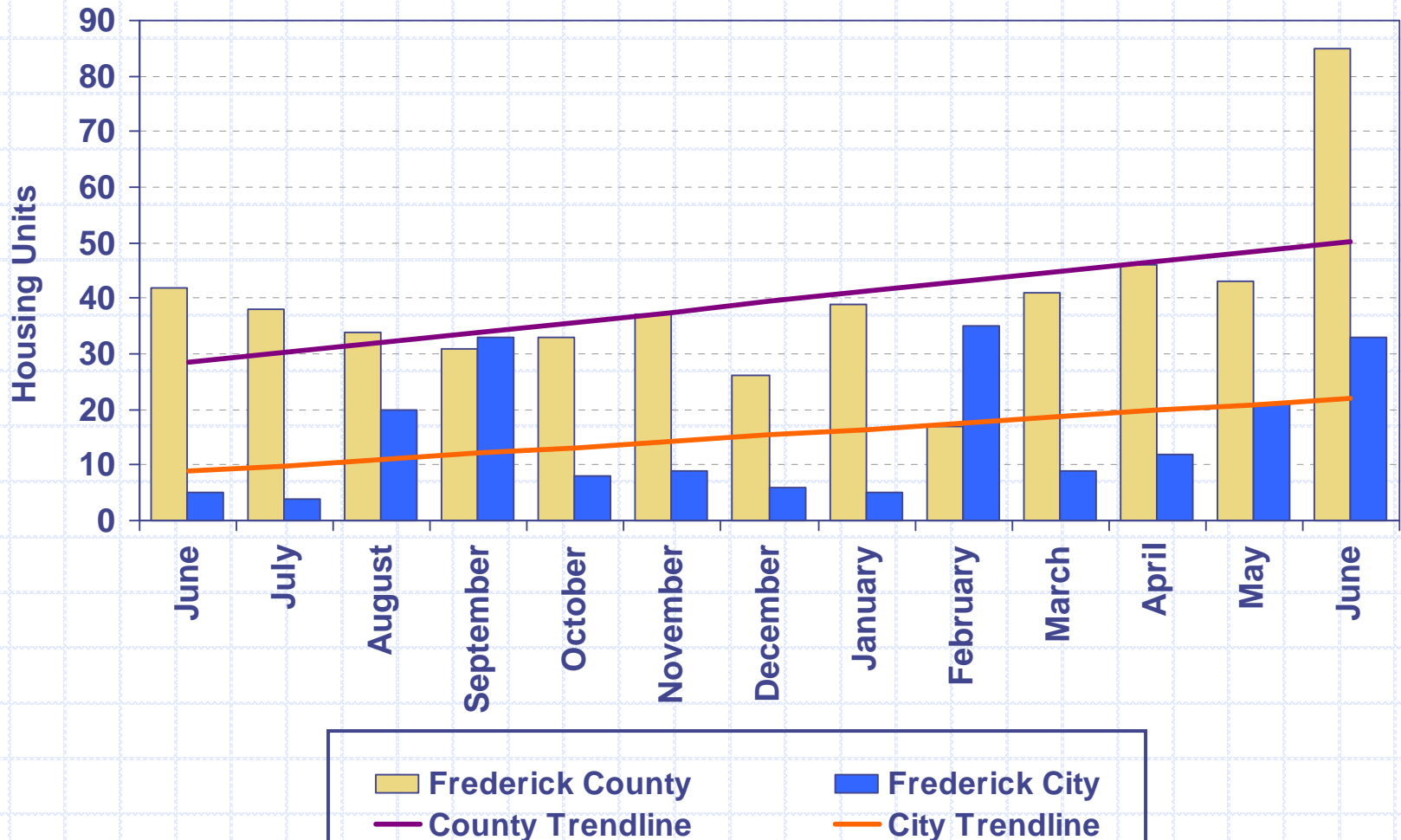


Building Permits Issued 2008 - 2009



Housing Unit Construction 2008 - 2009

Housing units based on issued permits



12 Month Total (July 2008 – June 2009): 665 units

Housing Unit Construction

Comparison of Current Month and YTD Units

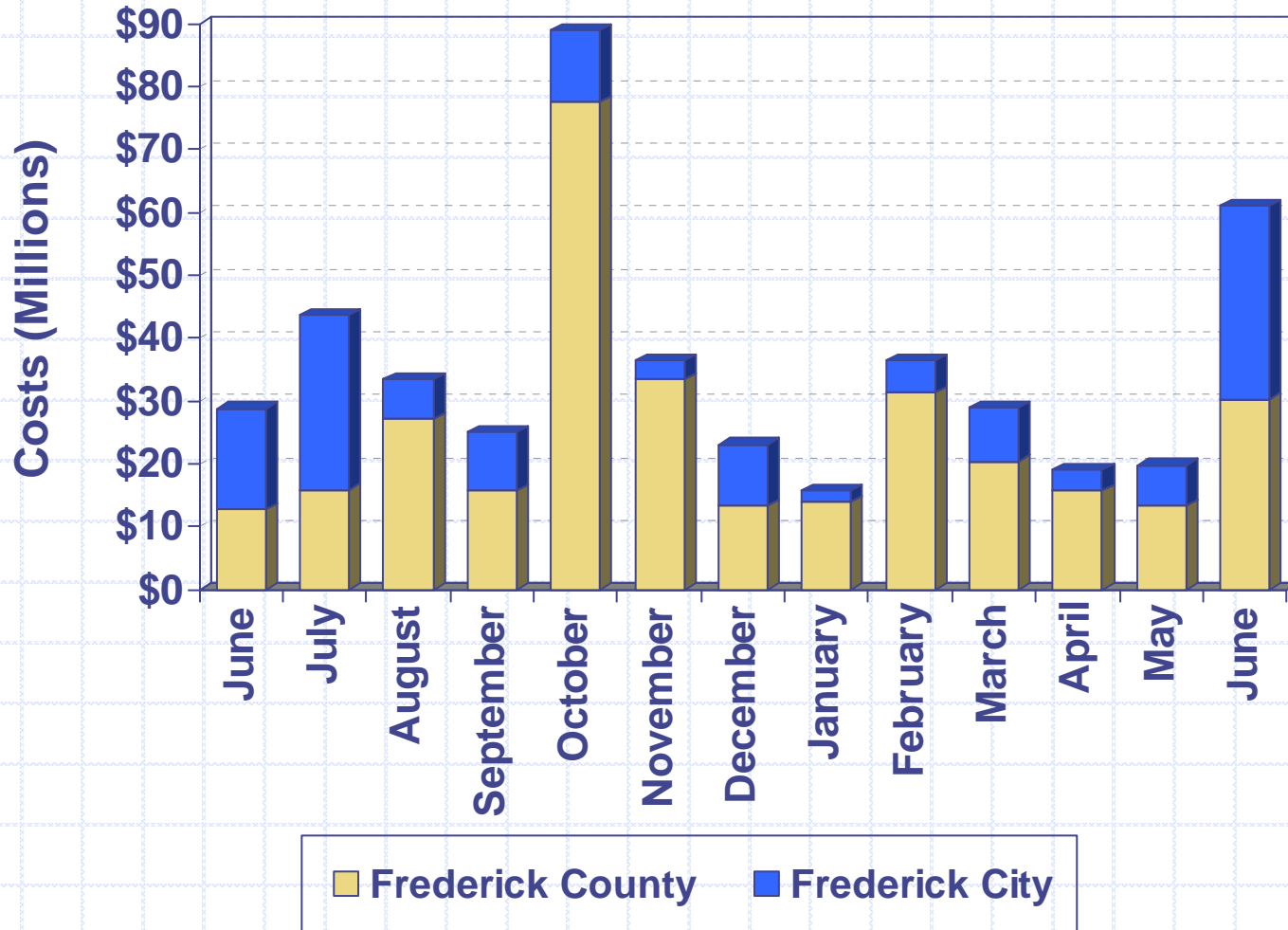
Current Month - June

Year	County	City	Total
2009	85	33	118
2008	42	5	47
2007	122	50	172
2006	89	50	139
2005	89	84	173
5 Year Avg.	85	44	129

YTD – June

Year	County	City	Total
2009	271	115	386
2008	232	51	283
2007	406	193	599
2006	502	238	740
2005	638	266	904
5 Year Avg.	410	173	583

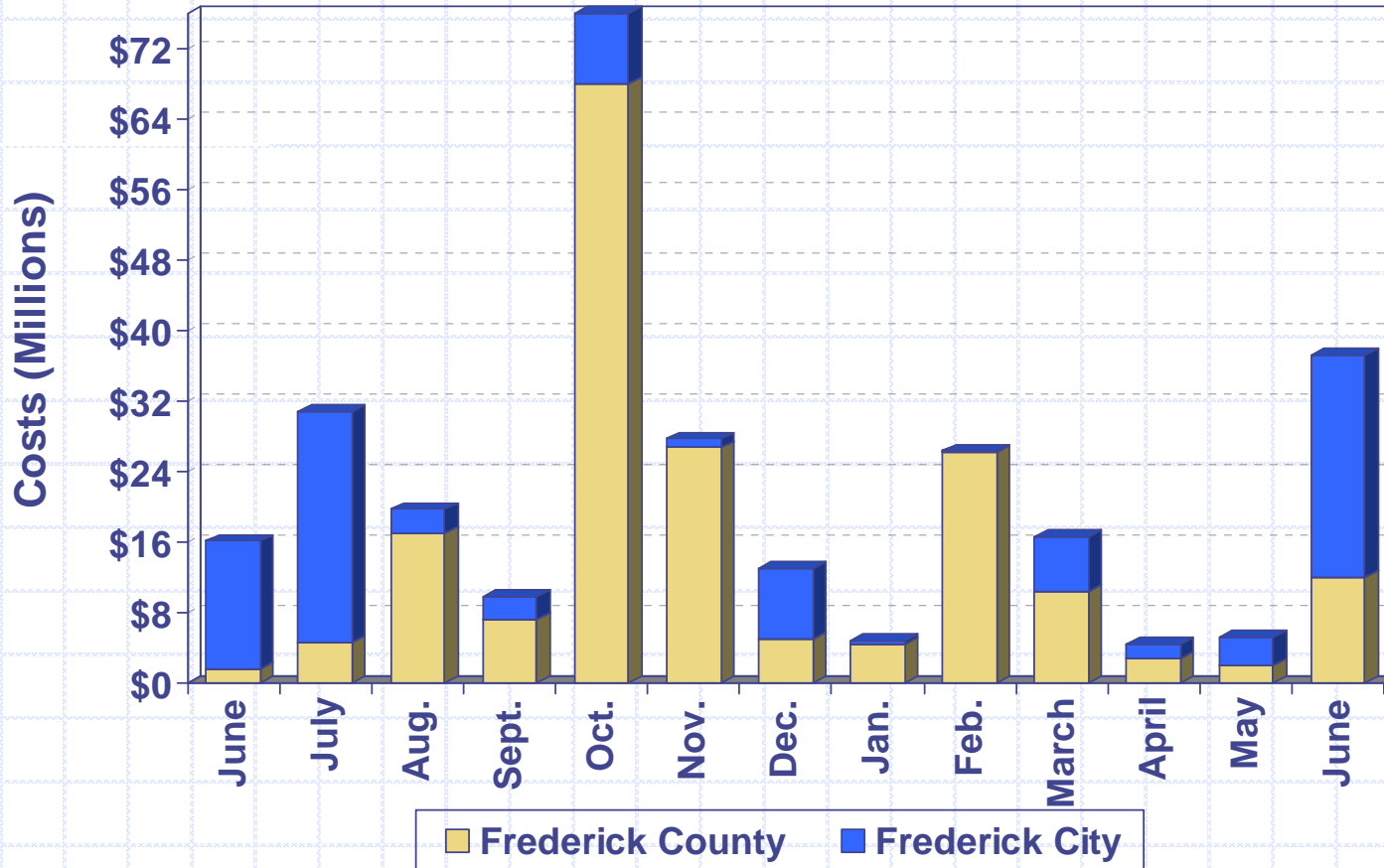
Construction Costs 2008 - 2009



Costs based on issued permits

Commercial Construction Costs

2008 - 2009



Cost per month:

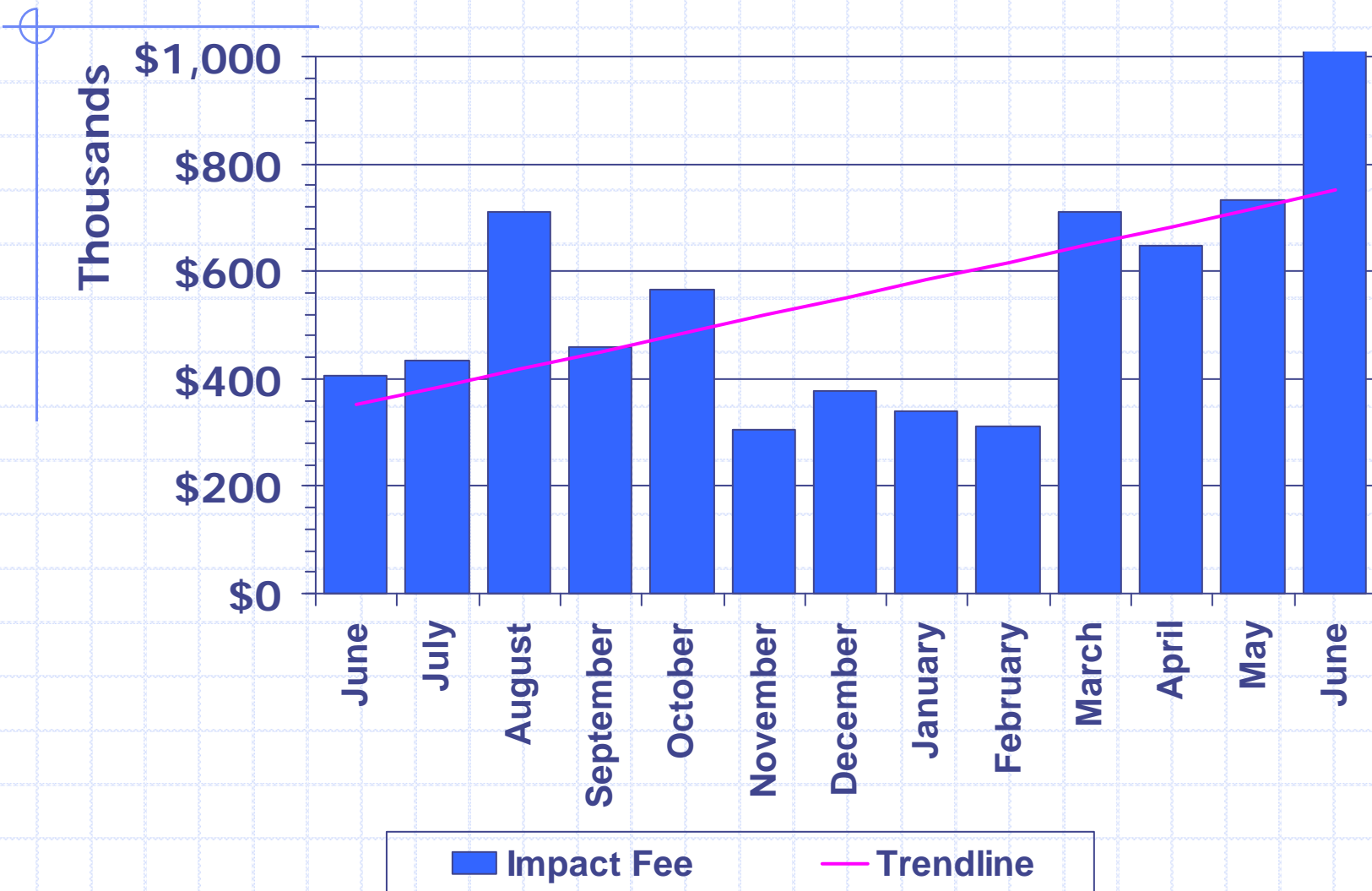
Costs based on issued permits

- July 2008 City – Frederick Community College classrooms/student center (\$18M)
- Aug. 2008 Co. – Ben’s Branch Pumping Station (\$4.4M) & Shockley Honda addition (\$4M)
- Oct. 2008 Co. – Linganore High School new construction (\$59.2M)
- Nov. 2008 Co. – Lonza Walkersville, Inc. new construction (\$20M)
- Feb. 2009 Co. – Costco new construction (\$19M)
- March 2009 Co. – Lonza Walkersville, Inc. alteration (\$5M)
- June 2009 Co. – Christian Life Center new construction (\$6.5M), Public Safety Training Facility alteration (\$3M), Mountain Manor Treatment Center new construction (\$2.6M)
- June 2009 City – Citizens Care & Rehab Center (\$24.6M)

Excise Tax 2008 - 2009



Impact Fee 2008 - 2009

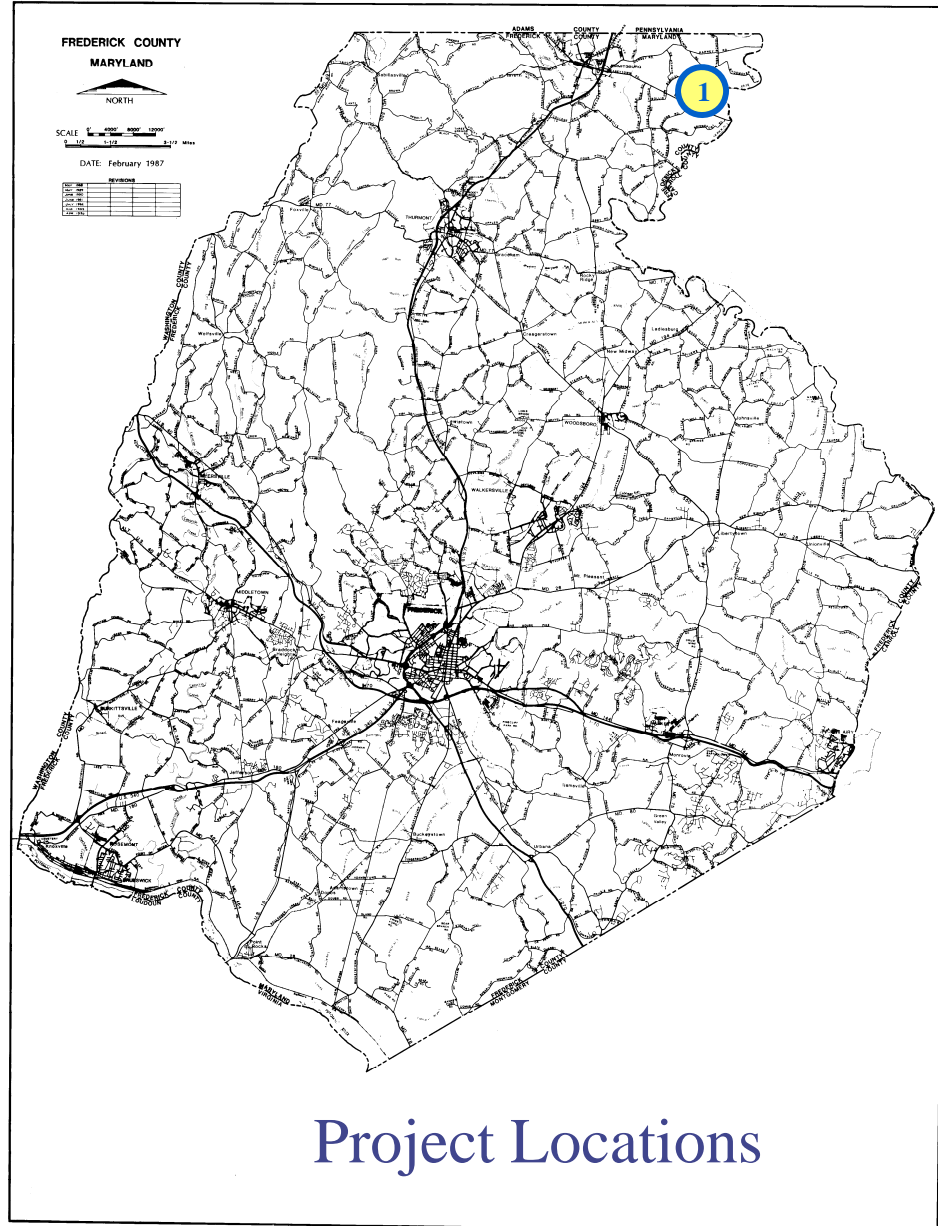


LIST OF PROJECTS

(expected to be presented
at upcoming FcPc meeting)

County Projects

1. Toms Creek Church

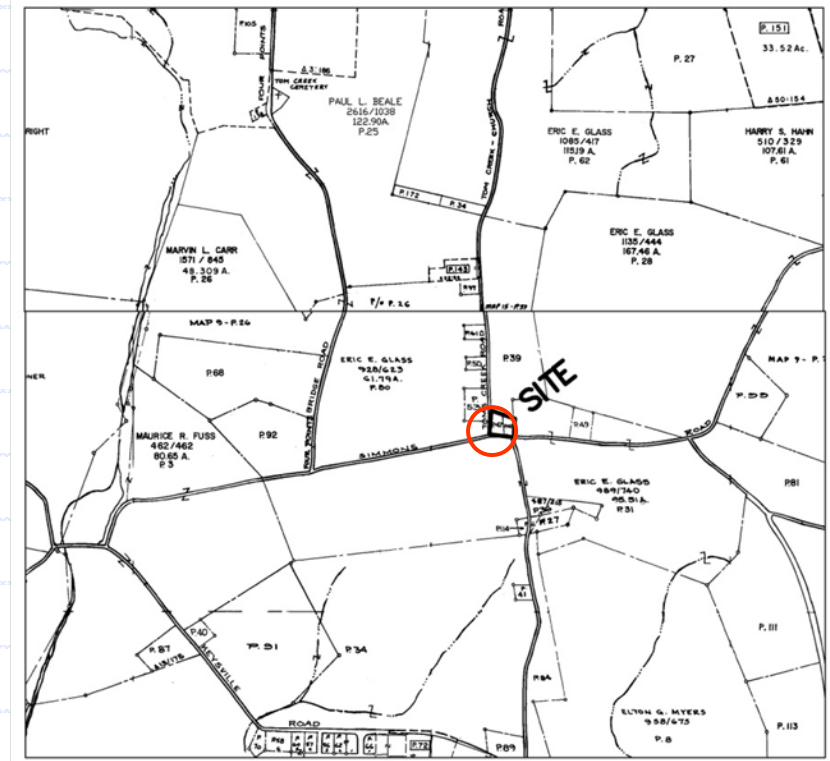




County Projects

Toms Creek Church

- ❑ Request: Site Plan Approval
- ❑ Location: North side Simmons Road, east side Toms Creek Church Road
- ❑ Total Use: Replace Fellowship Hall 6,880 sq. ft.
- ❑ Zoned: Agriculture
- ❑ Applicant: Toms Creek Church
- ❑ Engineer: R.F. Gauss & Associates, Inc.



Toms Creek Church

