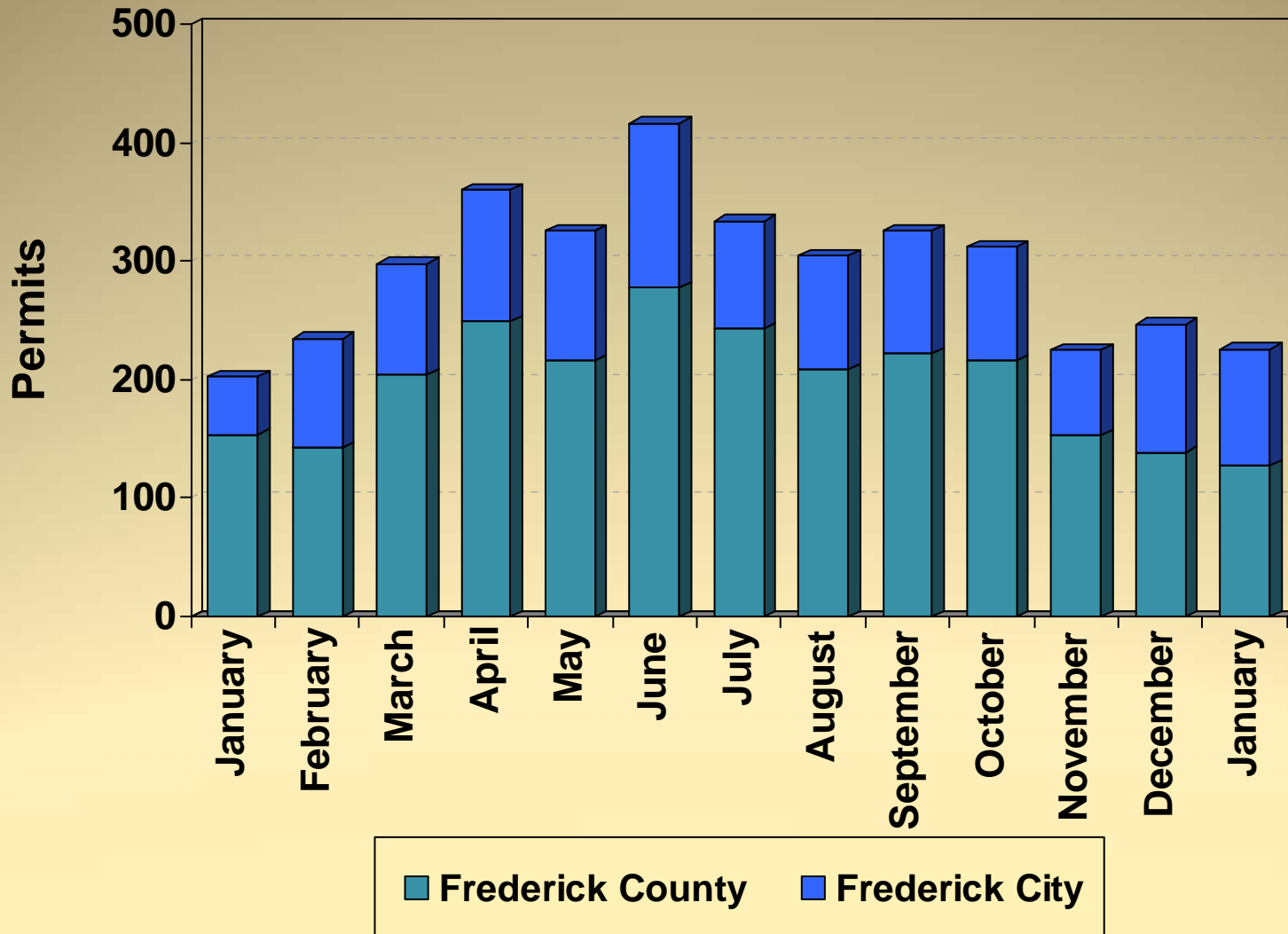


Division of Permitting and Development Review

- March 4, 2010
- Director's Development Data/Project Presentation to the County Commissioners

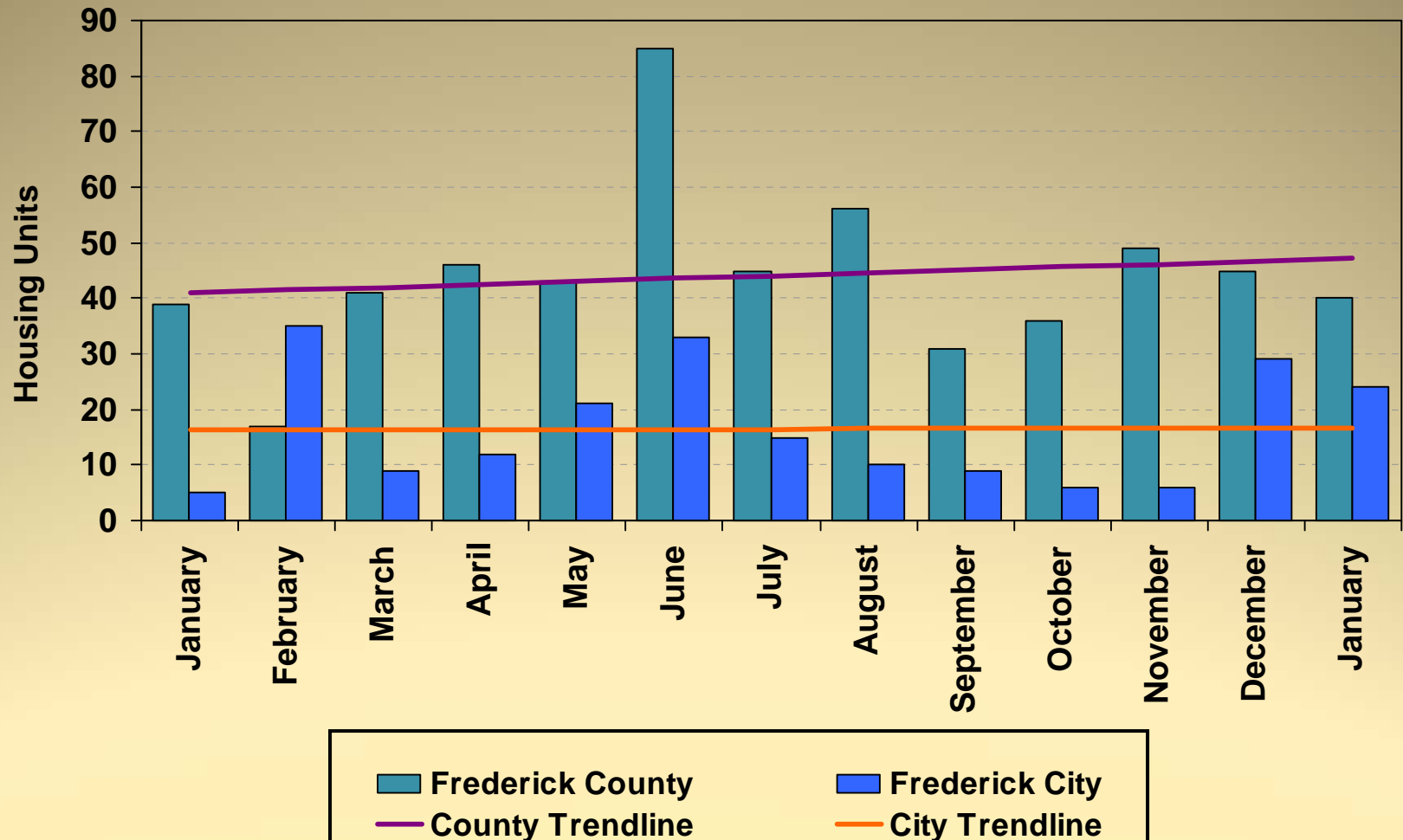


Building Permits Issued 2009 - 2010



Housing Unit Construction 2009 - 2010

Housing units based on issued permits



12 Month Total (January 2009 – January 2010): 753 units

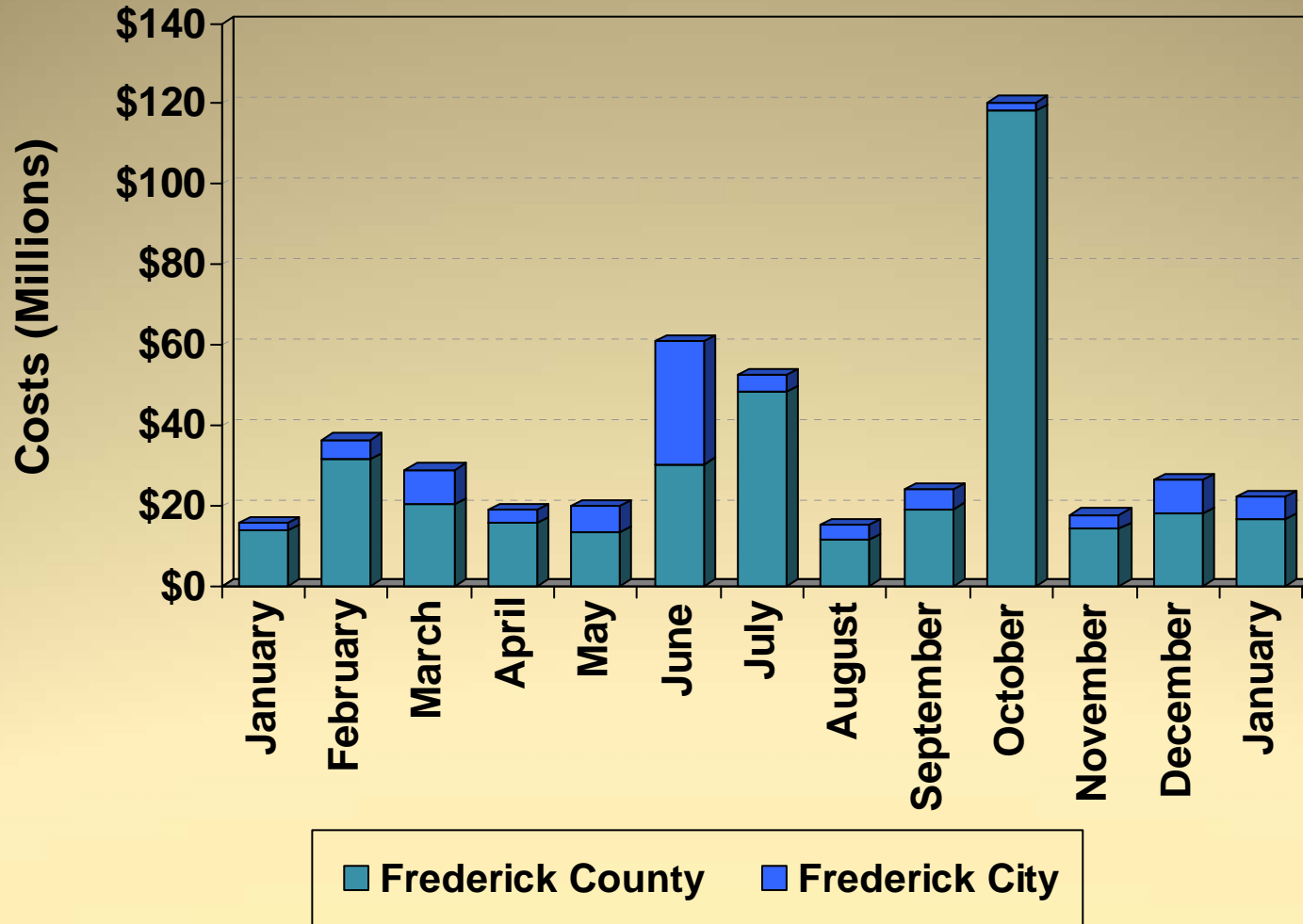
Housing Unit Construction

Comparison of Current Month and YTD Units

Current Month -January			
Year	County	City	Total
2010	40	24	64
2009	39	5	44
2008	24	3	27
2007	39	8	47
2006	91	71	162
5 Year Avg.	47	22	69

YTD – January			
Year	County	City	Total
2010	40	24	64
2009	39	5	44
2008	24	3	27
2007	39	8	47
2006	91	71	162
5 Year Avg.	47	22	69

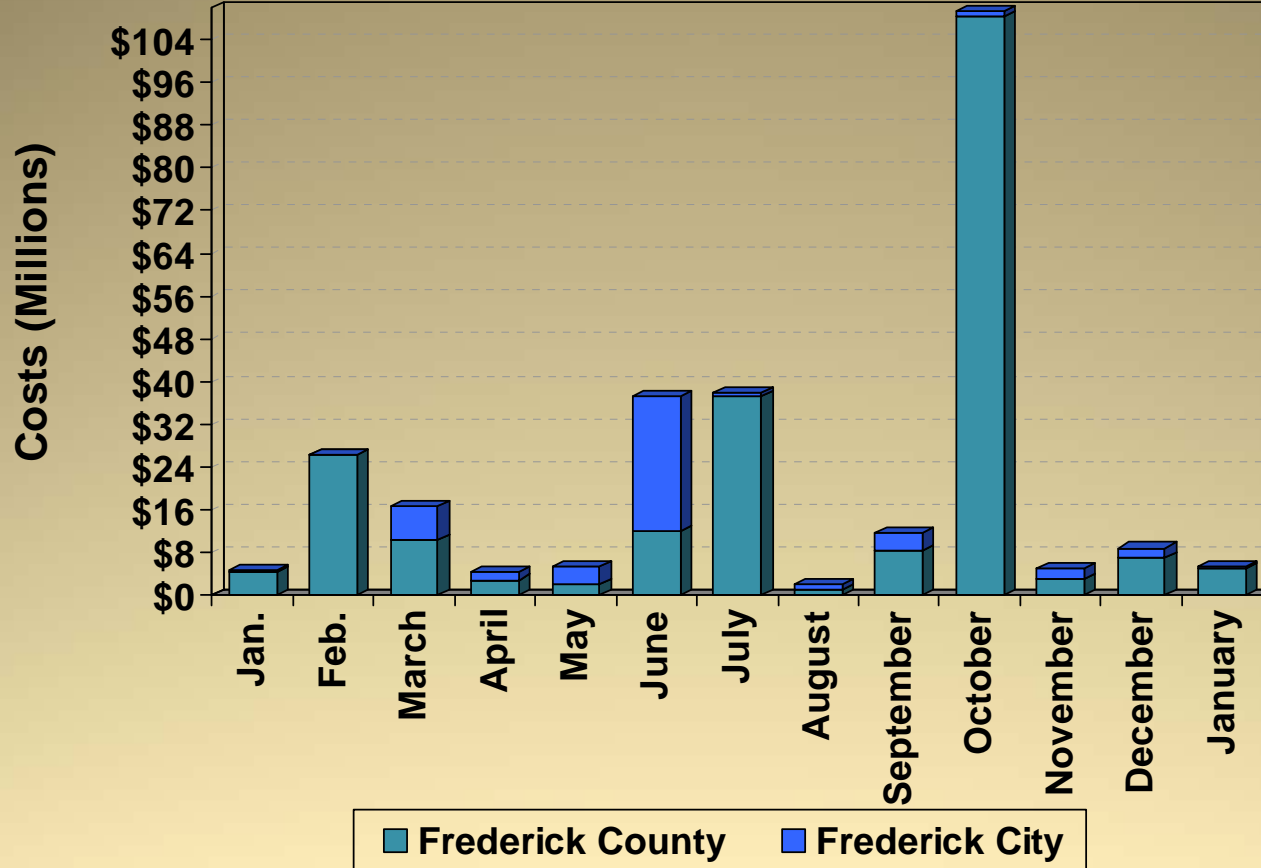
Construction Costs 2009 - 2010



Frederick County Frederick City

Costs based on issued permits

Commercial Construction Costs 2009 - 2010



Cost per month:

Costs based on issued permits

September 2009 Co. – Mountain View Community Church new construction (\$4.6M), Frederick County Div. Of Parks new construction (\$2.6M)

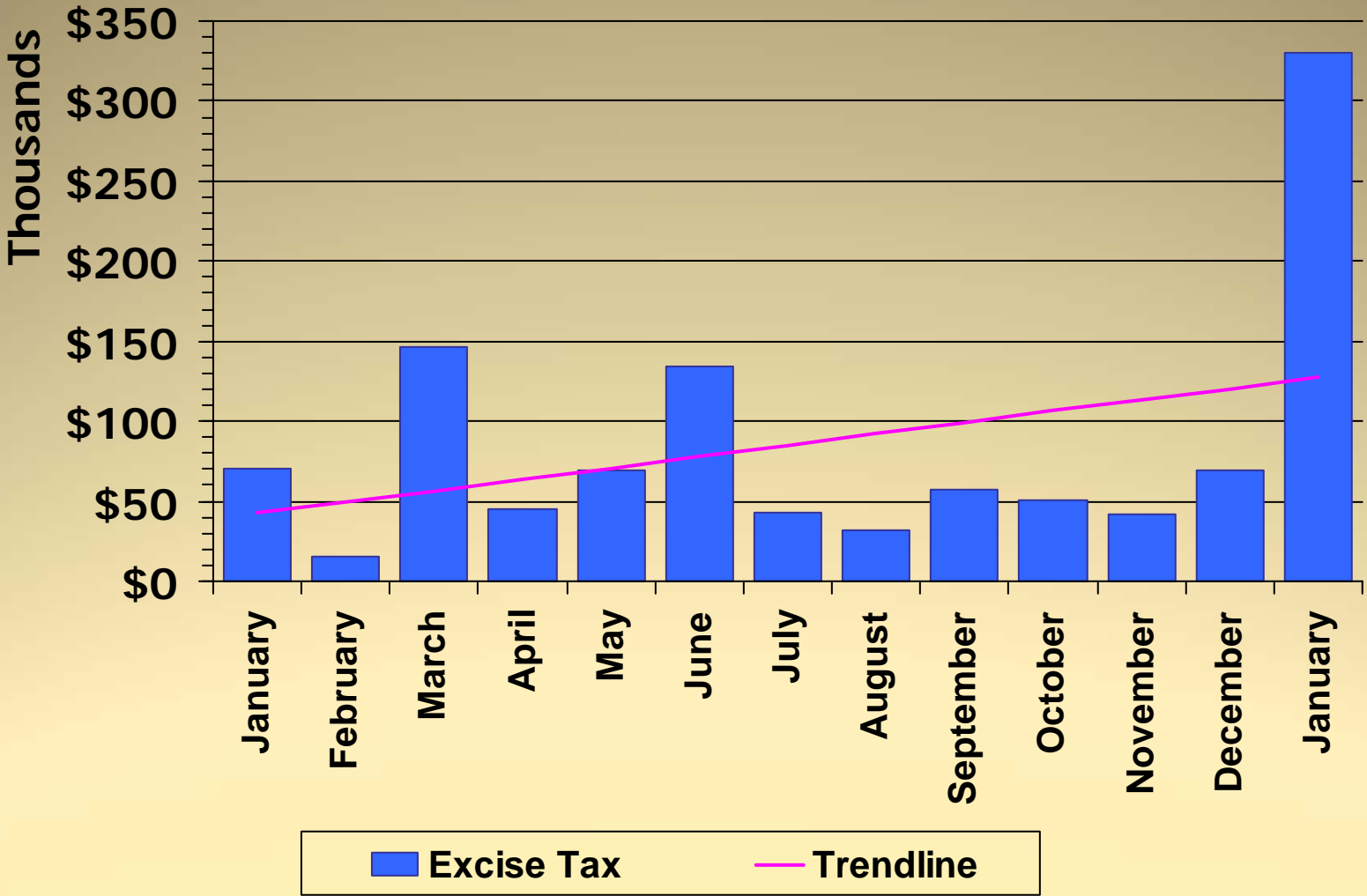
October 2009 Co. – DUSWM new construction , accessory, addition (\$100M), SAIC – Frederick Inc. alteration (\$4.4M), Mt. Carmel U. M. Church addition (\$2.0M)

November 2009 Co. – St. Ignatius Catholic Church addition (\$1.8 M)

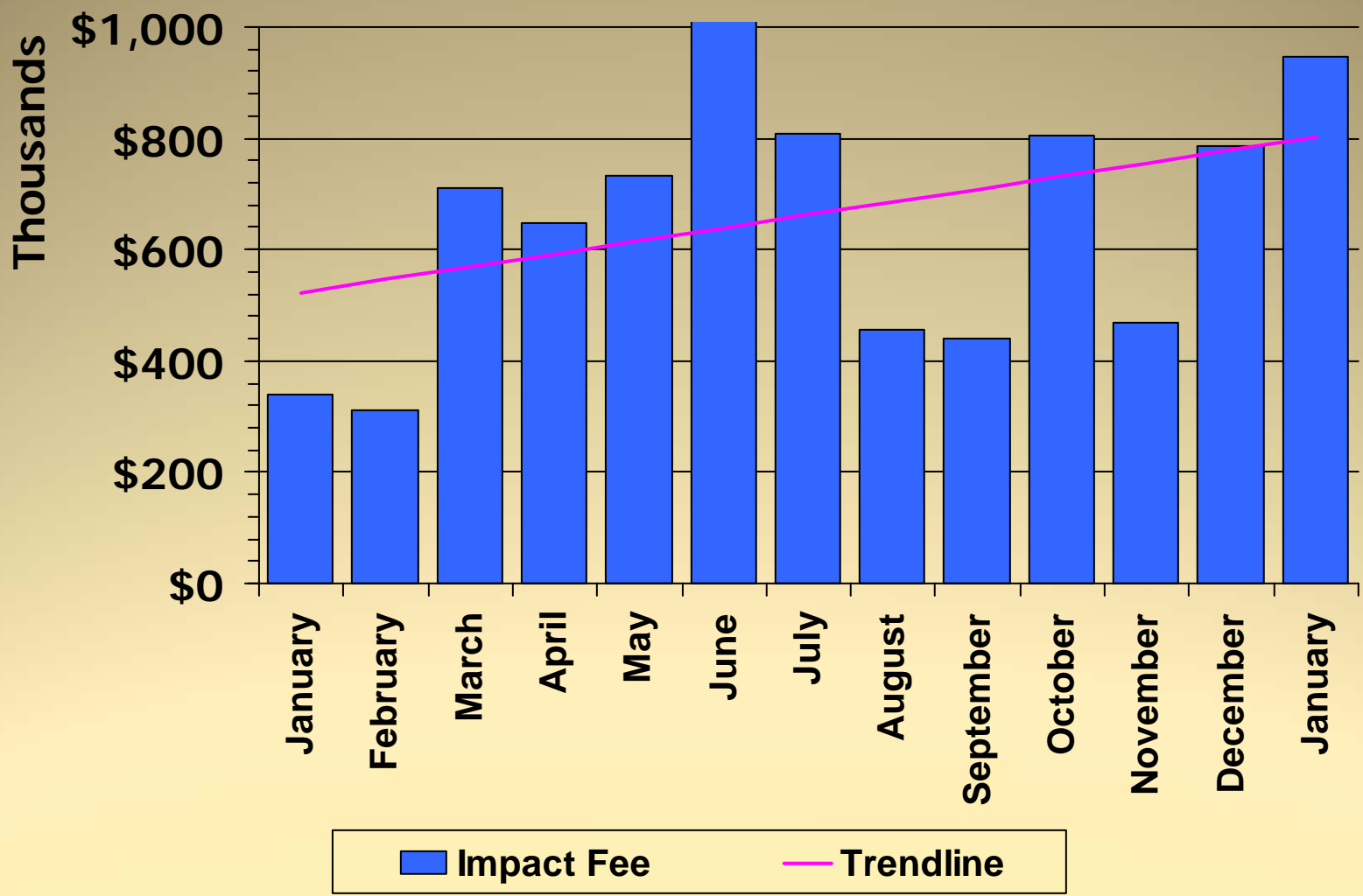
December 2009 Co. – Brunswick Public Library new (\$4.5M), Frederick Memorial Hospital Imaging Dept. tenant fit out (\$1.6M)

January 2010 Co. – Health and Human Services Alteration (\$2.5M)

Excise Tax 2009 - 2010



Impact Fee 2009 - 2010

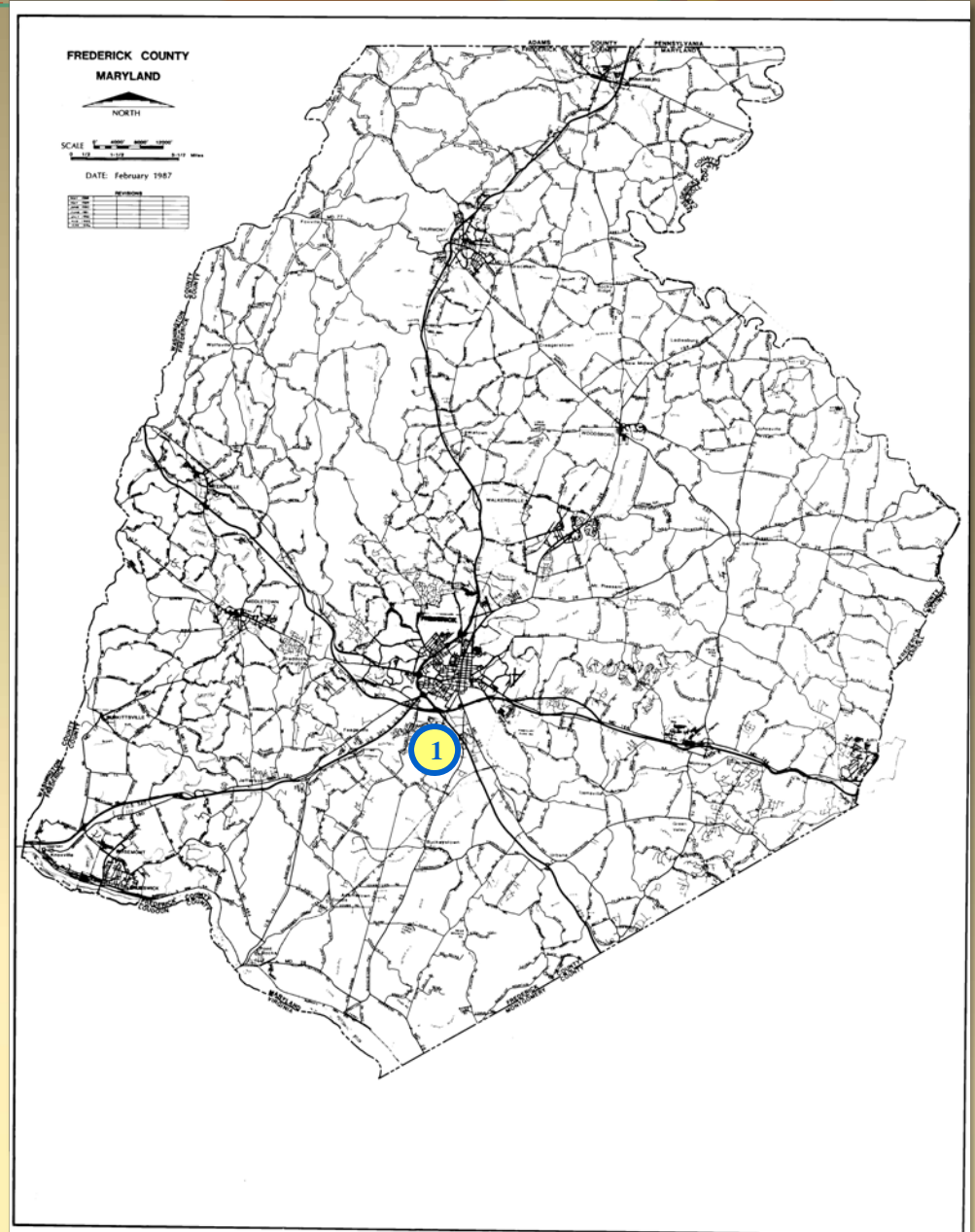


LIST OF PROJECTS

(expected to be presented at upcoming FcPc meeting)

County Projects

1. Church of the Redeemer

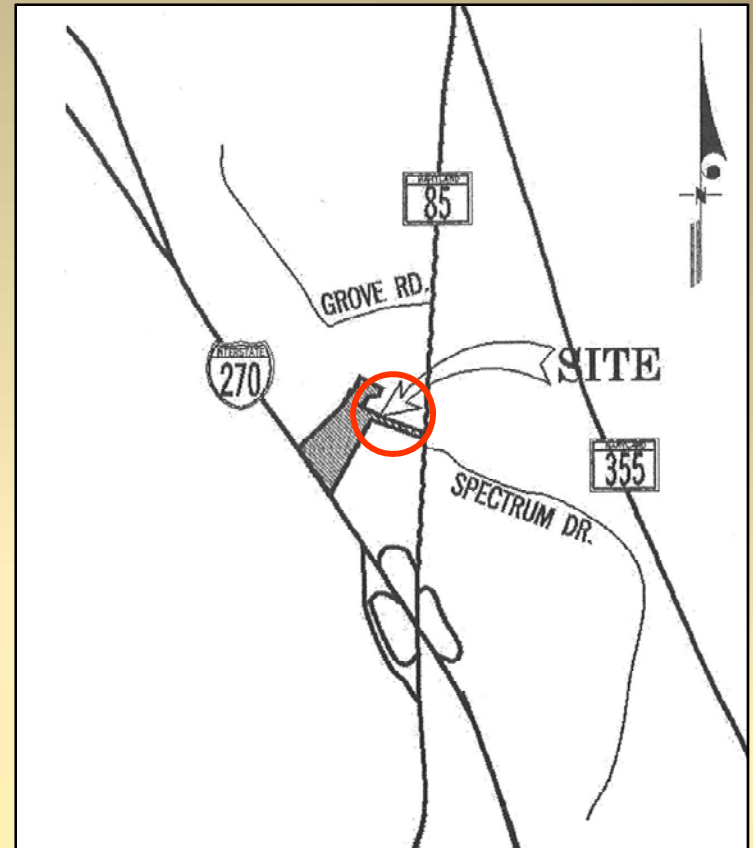




County Projects

Church of the Redeemer

- ❑ Request: Site Plan Approval for Change of Use, & APFO Exemption under §1-20-30
- ❑ Location: West Side of MD Route 85 (former Circuit City building)
- ❑ Total Use: 27,600 sq. ft. church
- ❑ Zoned: General Commercial
- ❑ Applicant: Church of the Redeemer
- ❑ Engineer: Greenhorne & O'Mara



Church of the Redeemer

