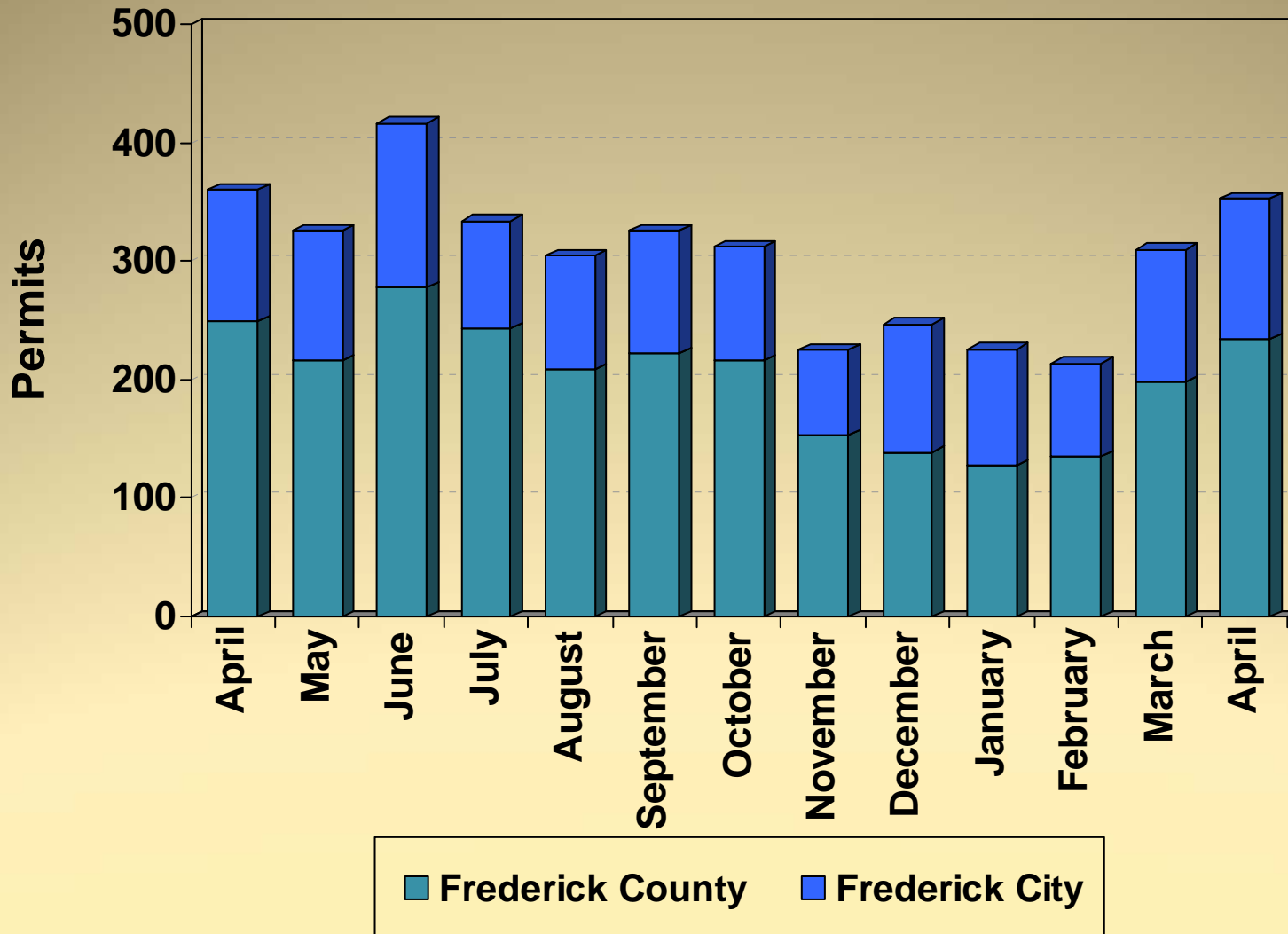


# Division of Permitting and Development Review

- June 3, 2010
- Director's Development Data/Project Presentation to the County Commissioners

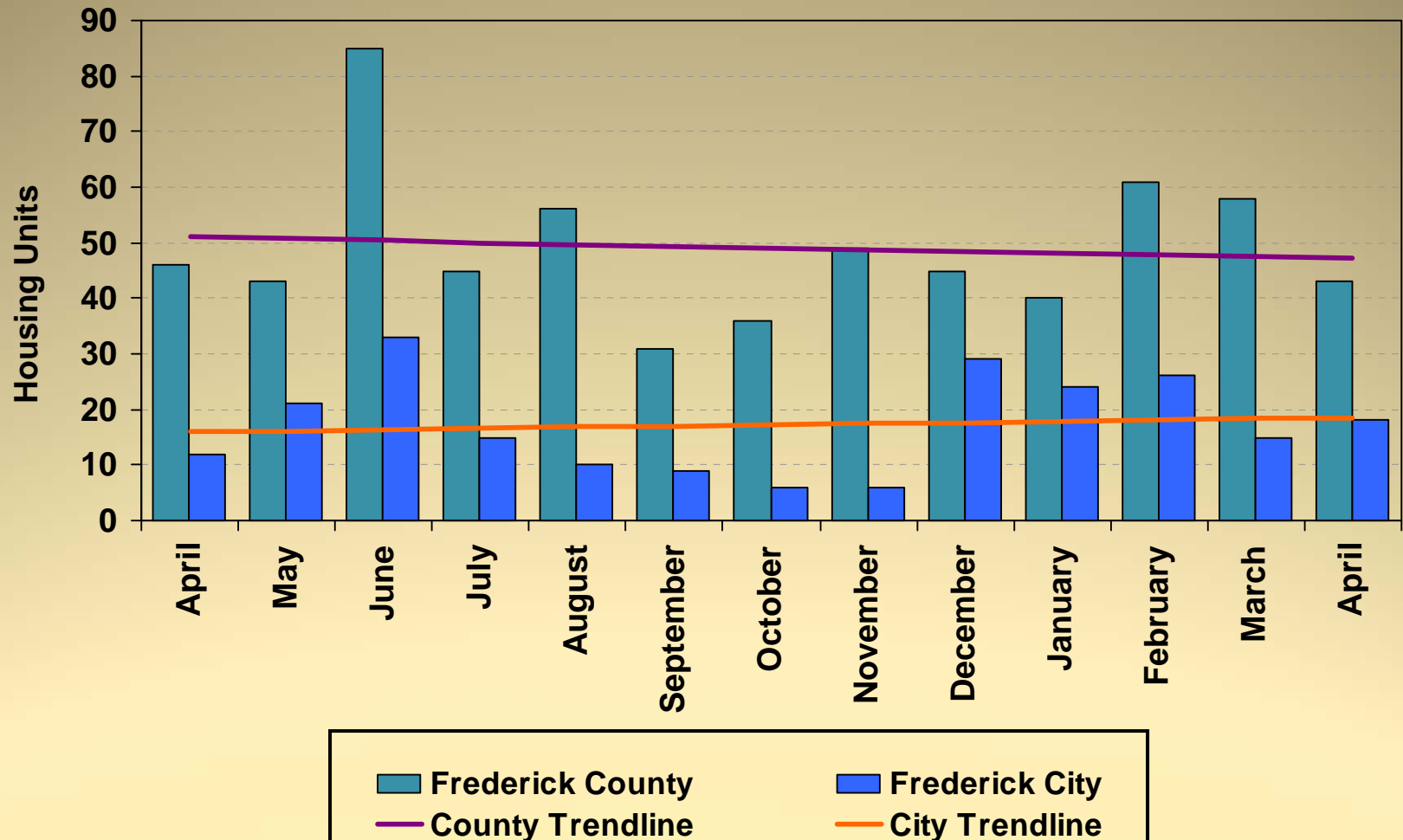


# Building Permits Issued 2009 - 2010



# Housing Unit Construction 2009 - 2010

Housing units based on issued permits



12 Month Total (May 2009 – April 2010): 804 units

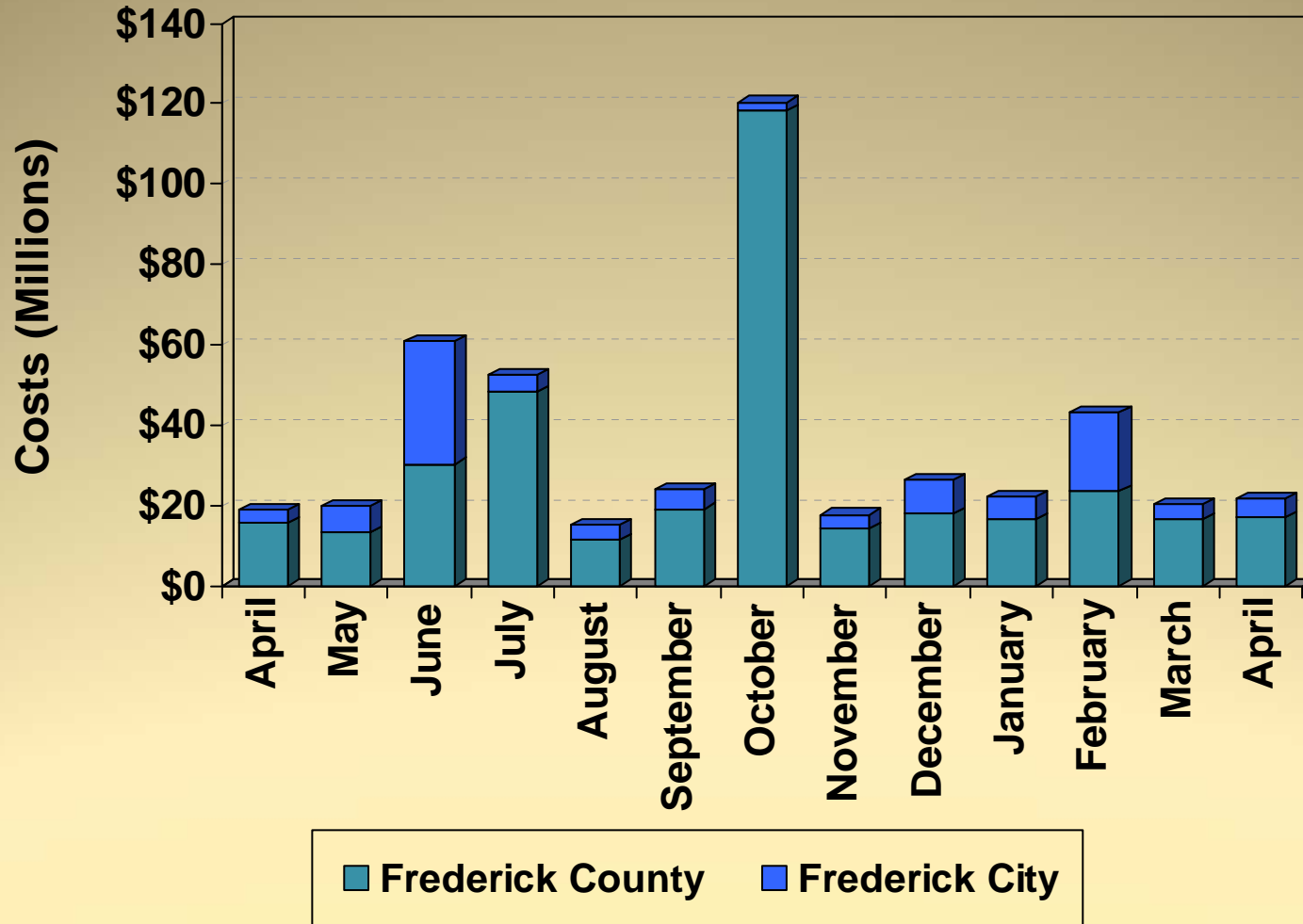
# Housing Unit Construction

## Comparison of Current Month and YTD Units

| Current Month -April |        |      |       |
|----------------------|--------|------|-------|
| Year                 | County | City | Total |
| 2010                 | 43     | 18   | 61    |
| 2009                 | 46     | 12   | 58    |
| 2008                 | 34     | 4    | 38    |
| 2007                 | 75     | 40   | 115   |
| 2006                 | 86     | 34   | 120   |
| 5 Year Avg.          | 57     | 22   | 78    |

| YTD – April |        |      |       |
|-------------|--------|------|-------|
| Year        | County | City | Total |
| 2010        | 202    | 83   | 285   |
| 2009        | 143    | 61   | 204   |
| 2008        | 155    | 43   | 198   |
| 2007        | 212    | 121  | 333   |
| 2006        | 341    | 170  | 511   |
| 5 Year Avg. | 211    | 96   | 306   |

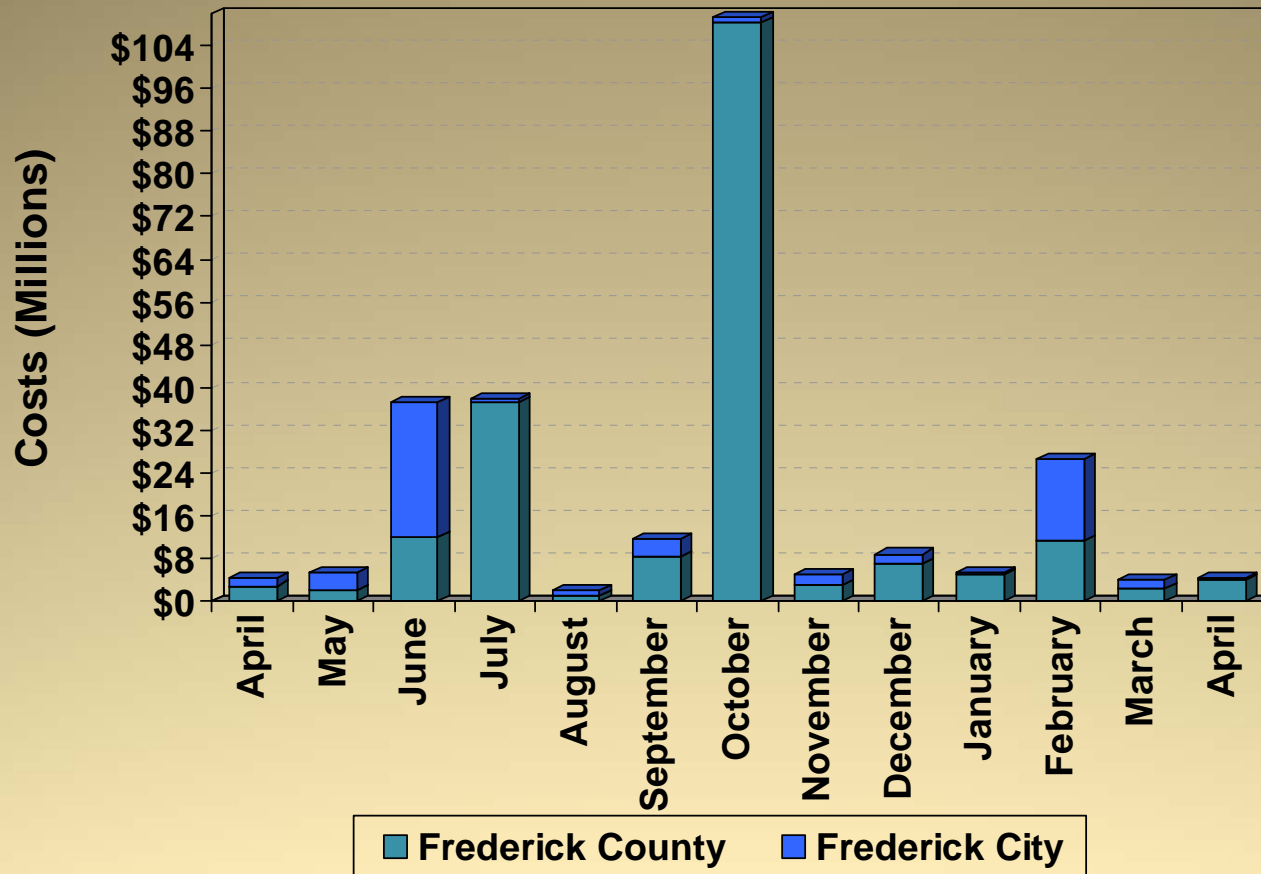
# Construction Costs 2009 - 2010



Costs based on issued permits

# Commercial Construction Costs

2009 - 2010



Cost per month:

Costs based on issued permits

October 2009 Co. – DUSWM new construction , accessory, addition (\$100M), SAIC – Frederick Inc. alteration (\$4.4M), Mt. Carmel U. M. Church addition (\$2.0M)

November 2009 Co. – St. Ignatius Catholic Church addition (\$1.8 M)

December 2009 Co. – Brunswick Public Library new (\$4.5M), Frederick Memorial Hospital Imaging Dept. tenant fit out (\$1.6M)

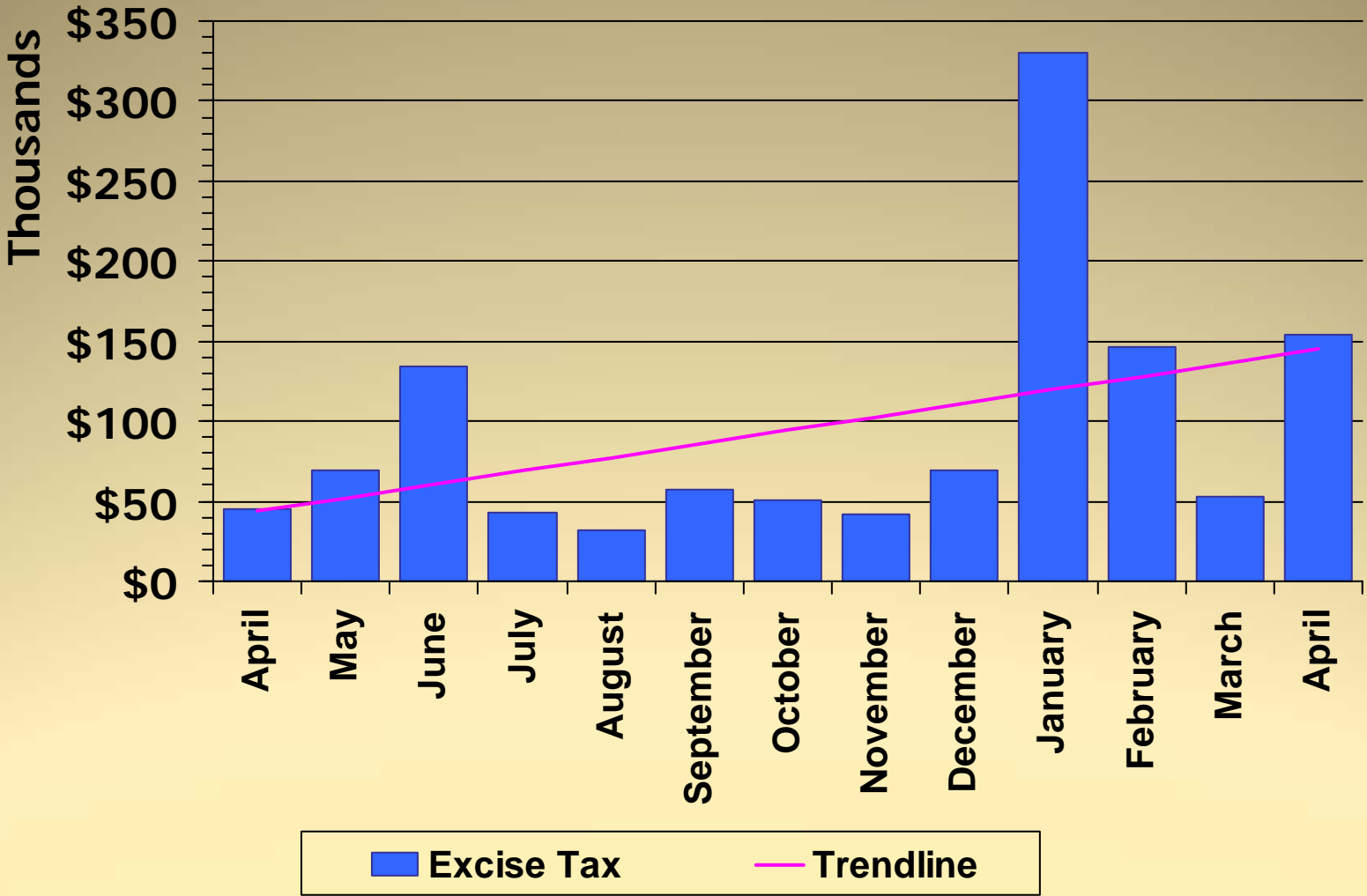
January 2010 Co. – Health and Human Services alteration (\$2.5M)

February 2010 Co. – Urbana Corporate Center -501LLC new (\$10.5)

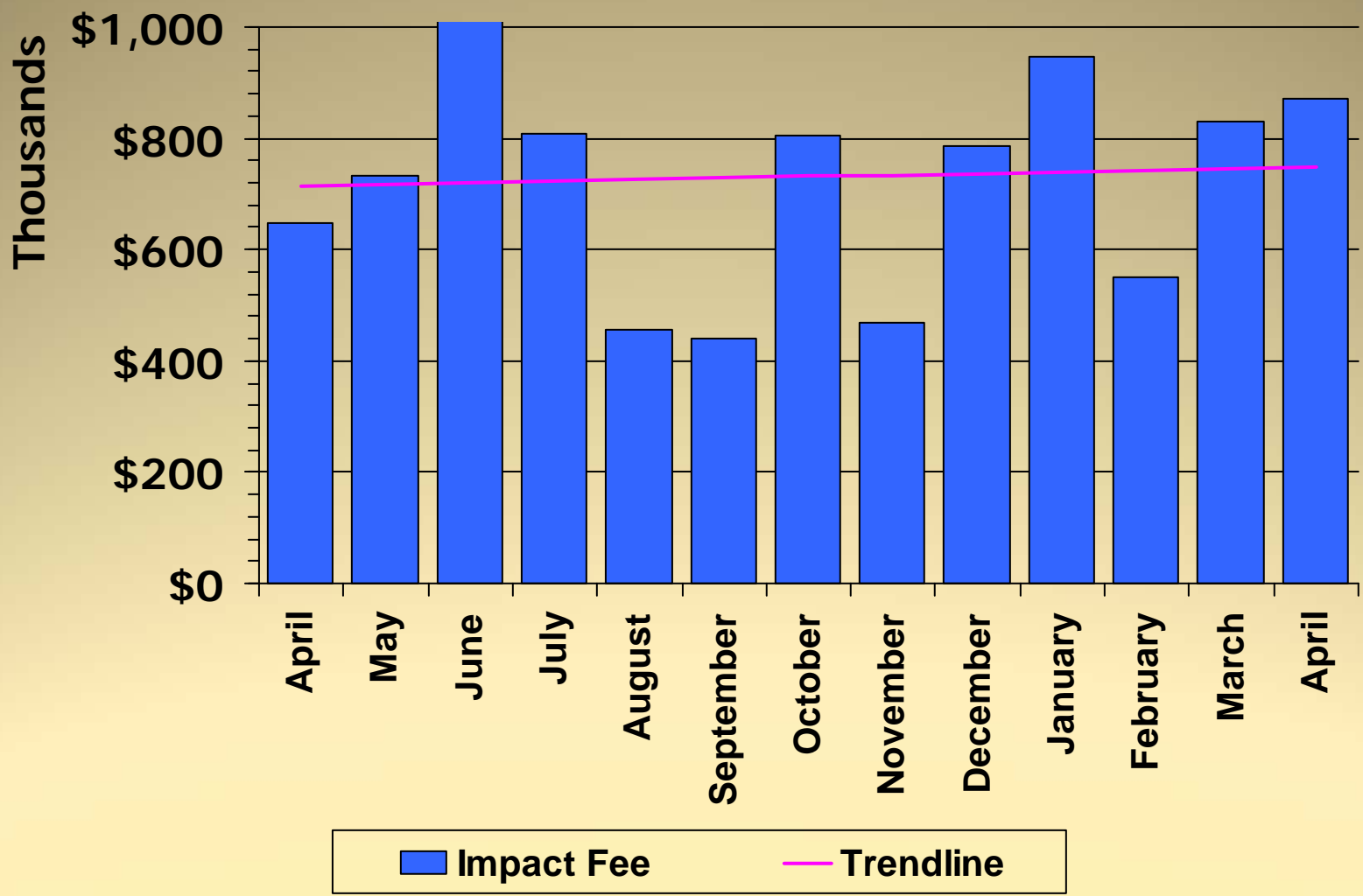
March 2010 Co. – Target existing tenant change to space (\$770,000.00)

April 2010 Co. – SAIC – Frederick, Inc. alteration, new tenant fit-out (\$2.4)

# Excise Tax 2009 - 2010



# Impact Fee 2009 - 2010





# LIST OF PROJECTS

(expected to be presented  
at upcoming FcPc meeting)

## County Projects

No new projects

