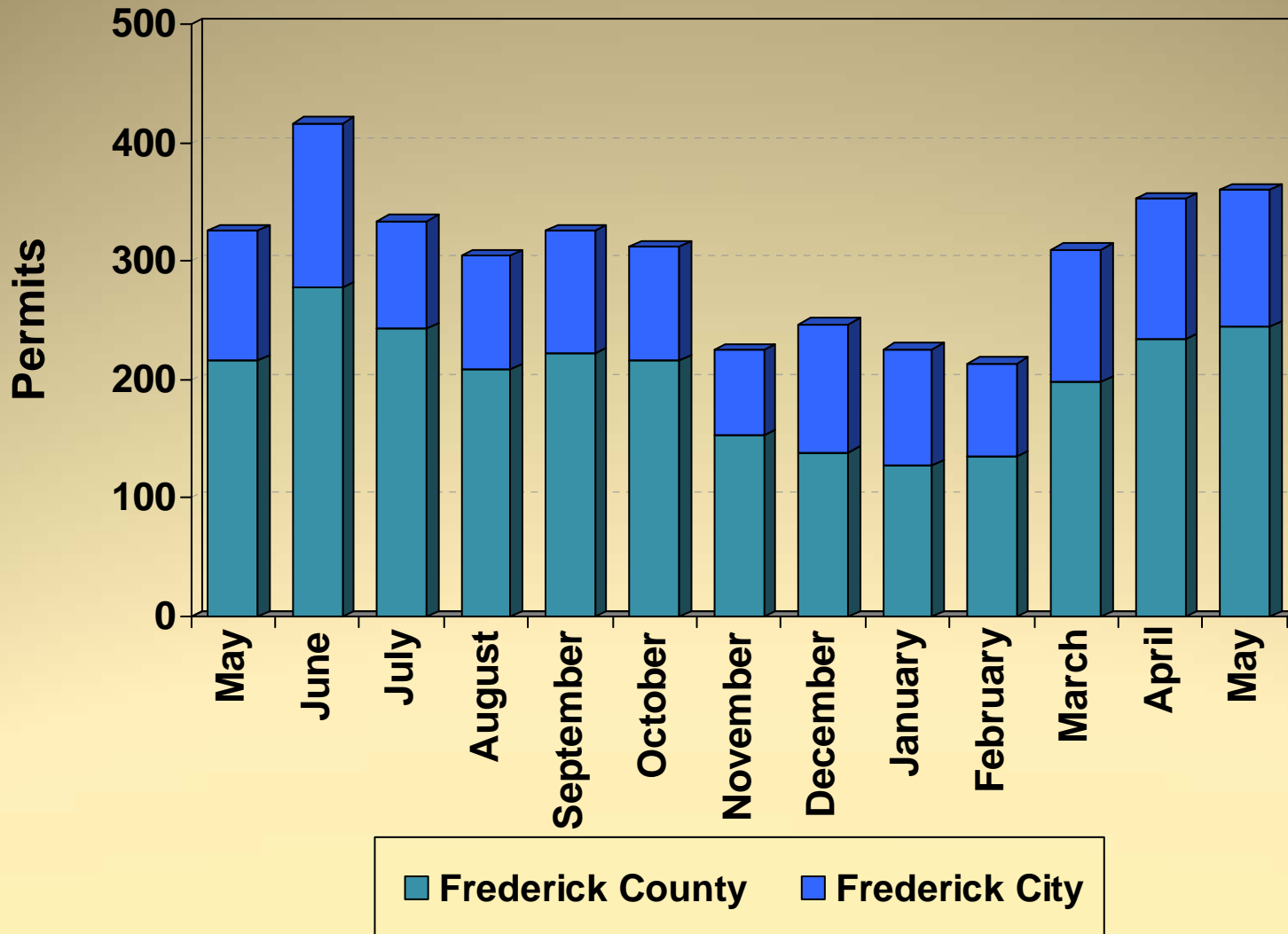


Division of Permitting and Development Review

- July 8, 2010
- Director's Development Data/Project Presentation to the County Commissioners

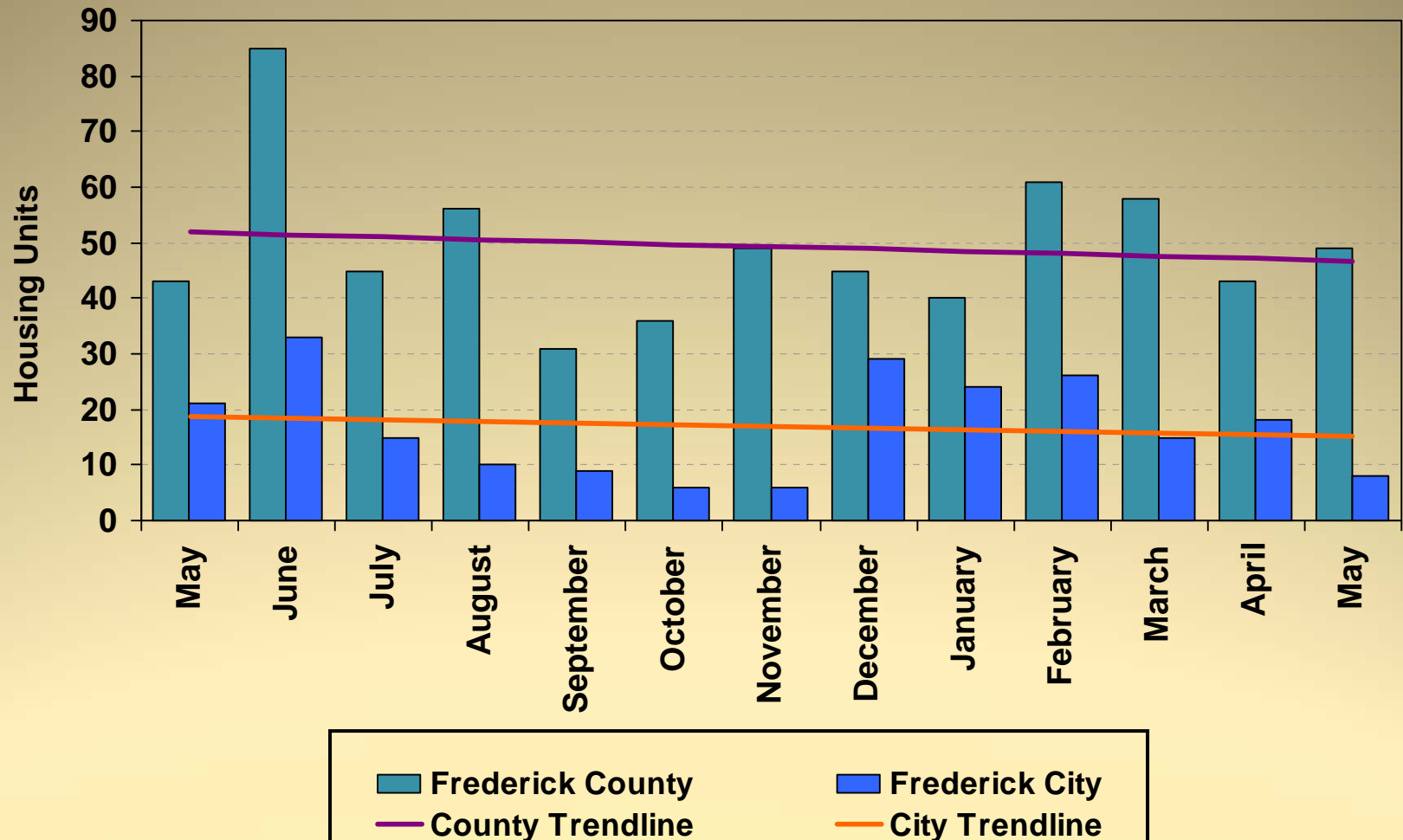


Building Permits Issued 2009 - 2010



Housing Unit Construction 2009 - 2010

Housing units based on issued permits



12 Month Total (June 2009 – May 2010): 797 units

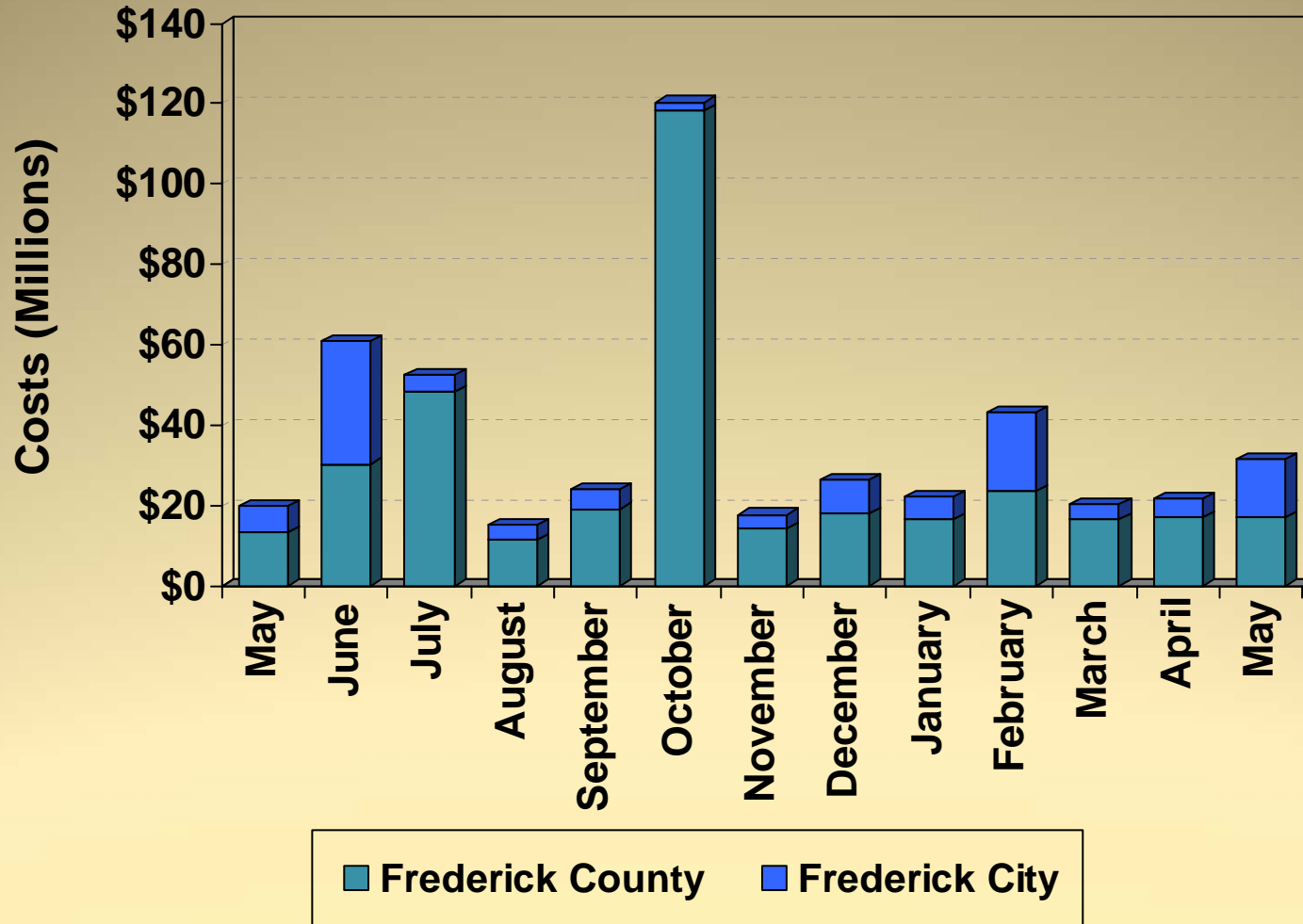
Housing Unit Construction

Comparison of Current Month and YTD Units

Current Month -May			
Year	County	City	Total
2010	49	8	57
2009	43	21	64
2008	35	3	38
2007	72	22	94
2006	72	18	90
5 Year Avg.	54	14	69

YTD – May			
Year	County	City	Total
2010	251	91	342
2009	186	82	268
2008	190	46	236
2007	284	143	427
2006	413	188	601
5 Year Avg.	265	110	375

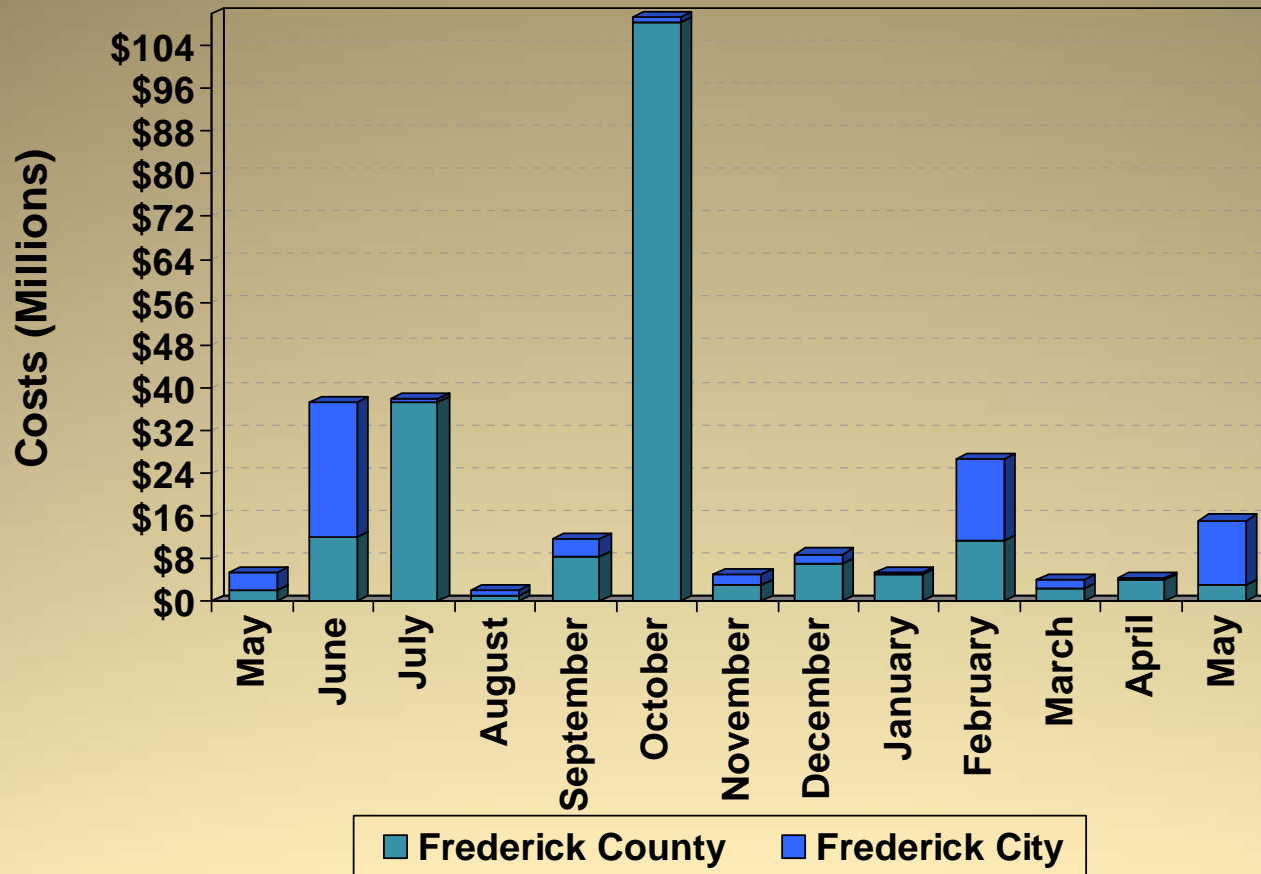
Construction Costs 2009 - 2010



Costs based on issued permits

Commercial Construction Costs

2009 - 2010



Cost per month:

Costs based on issued permits

November 2009 Co. – St. Ignatius Catholic Church addition (\$1.8 M)

December 2009 Co. – Brunswick Public Library new (\$4.5M), Frederick Memorial Hospital Imaging Dept. tenant fit out (\$1.6M)

January 2010 Co. – Health and Human Services alteration (\$2.5M)

February 2010 Co. – Urbana Corporate Center -501LLC new (\$10.5)

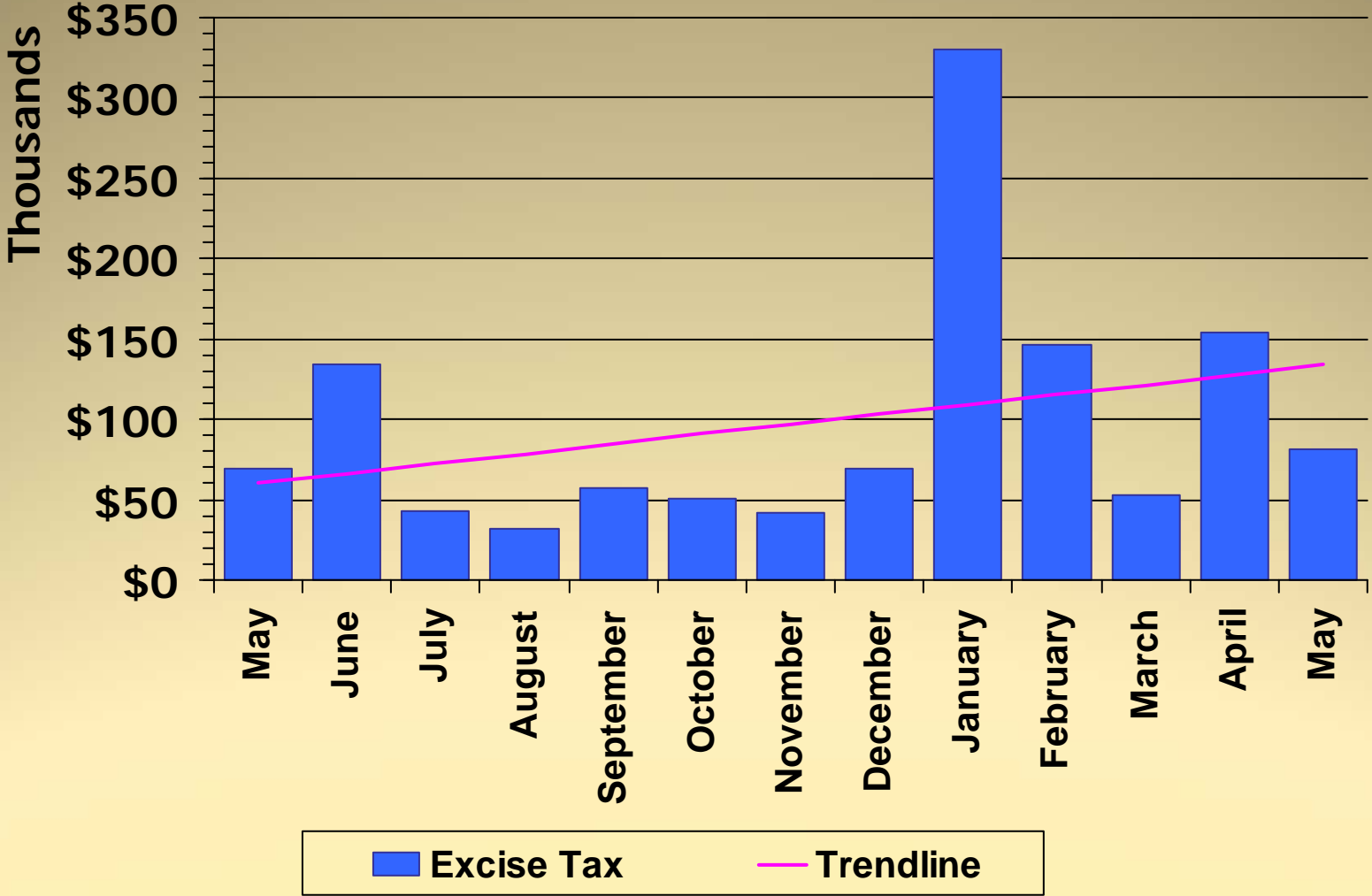
March 2010 Co. – Target existing tenant change to space (\$770,000)

April 2010 Co. – SAIC – Frederick, Inc. alteration, new tenant fit-out (\$2.4)

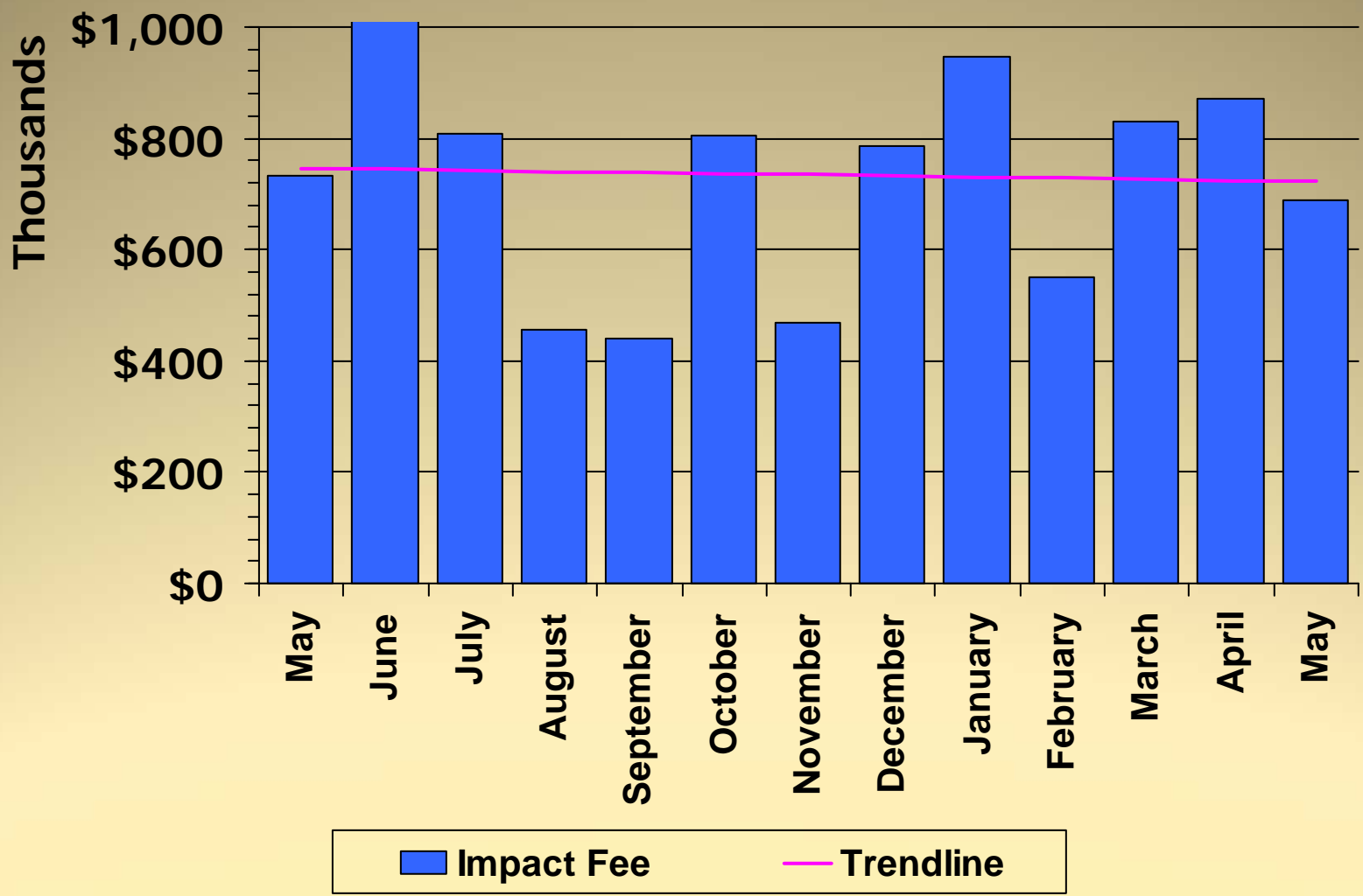
May 2010 Co. – Urbana Dist. Park Maintenance Bldg. new, alteration (\$526,800), Urbana District Park Restroom Bldg. new, complete (\$417,900), Mount Saint Mary’s Univ. alteration (\$500,000)

May 2010 City – Wegmans Food Market new (\$9.7M), Frederick Comm. College alteration/repair (\$1M)

Excise Tax 2009 - 2010



Impact Fee 2009 - 2010



LIST OF PROJECTS

(expected to be presented
at upcoming FcPc meeting)

County Projects

No new projects

