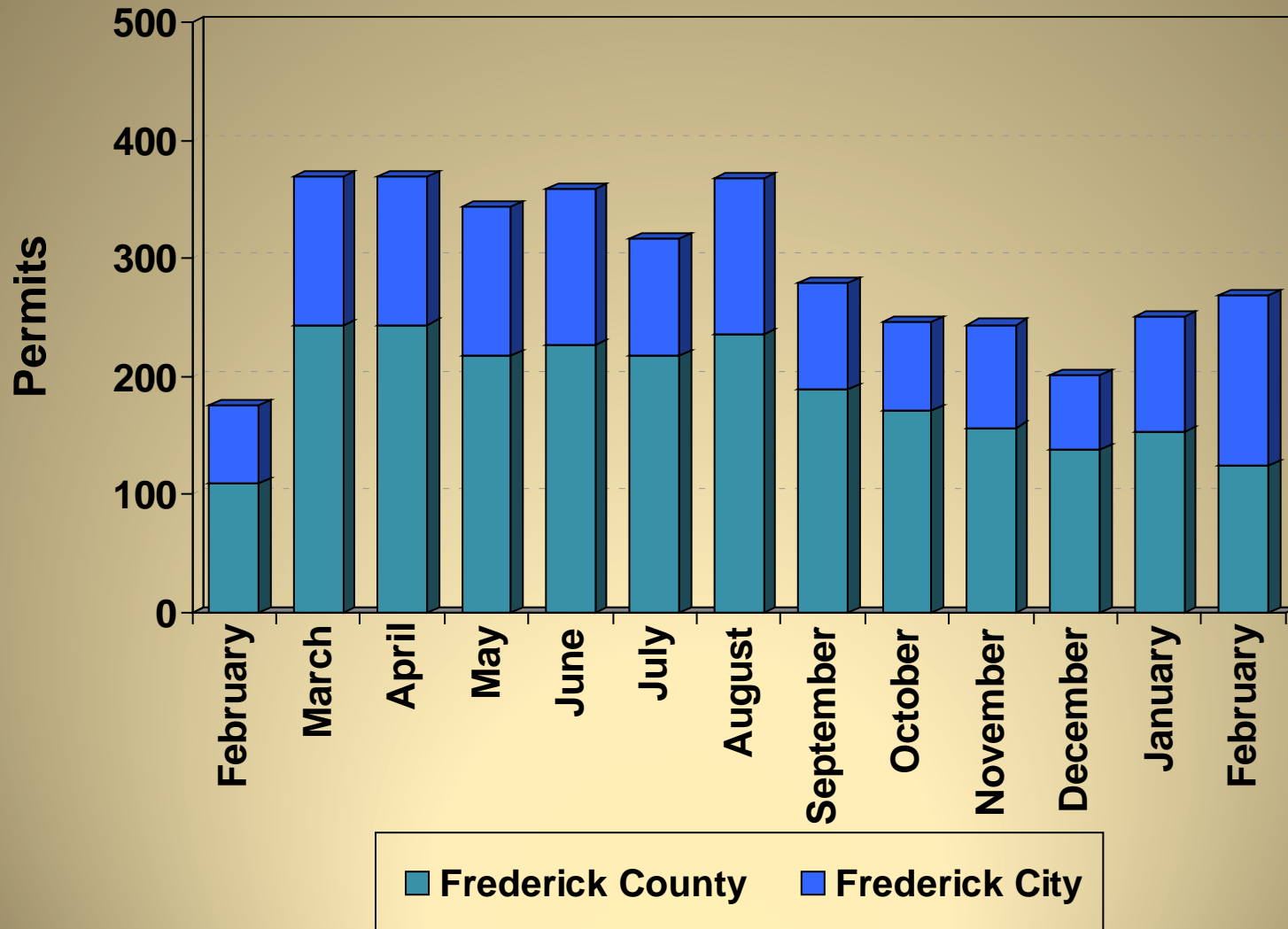


# Community Development Division

- April 6, 2012
- Development Data/Project

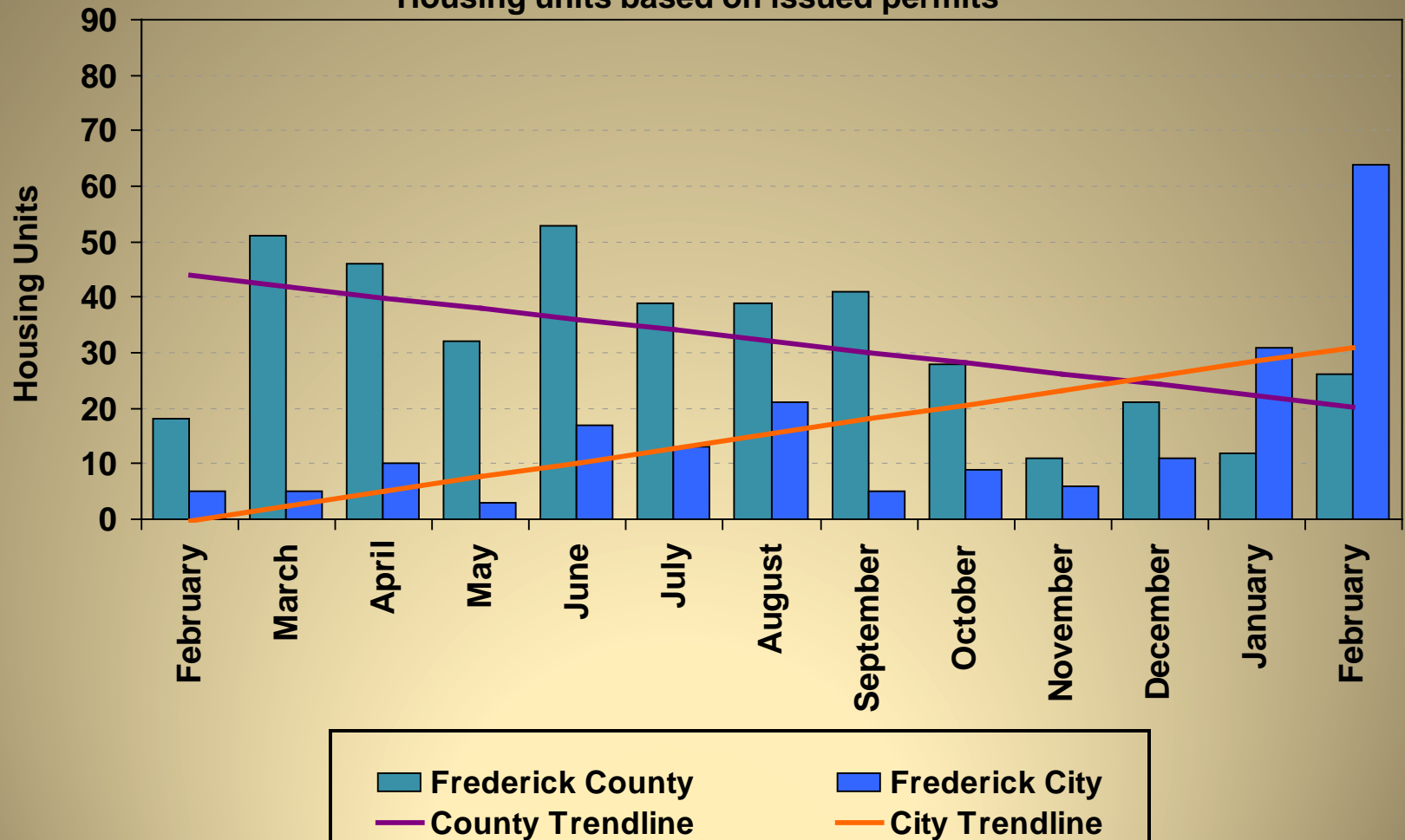


# Building Permits Issued 2011 - 2012



# Housing Unit Construction 2011 - 2012

Housing units based on issued permits



12 Month Total (February 2011 – January 2012): 594 Units

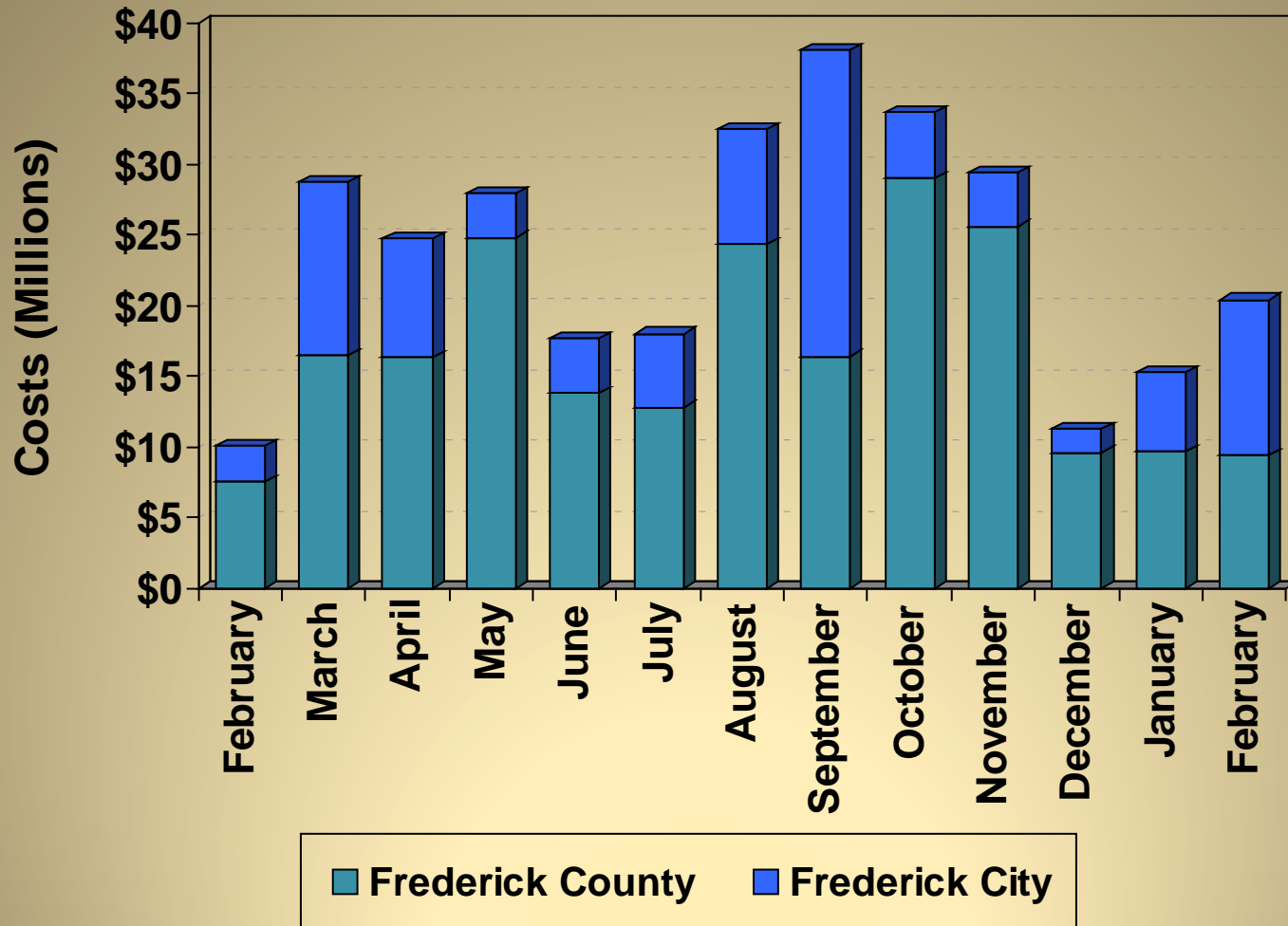
# Housing Unit Construction

## Comparison of Current Month and YTD Units

<b>Current Month – February</b>			
<b>Year</b>	<b>County</b>	<b>City</b>	<b>Total</b>
2012	26	64	90
2011	18	5	23
2010	61	26	87
2009	17	35	52
2008	53	1	54
5 Year Avg.	35	26	61

<b>YTD – February</b>			
<b>Year</b>	<b>County</b>	<b>City</b>	<b>Total</b>
2012	38	95	133
2011	63	9	72
2010	101	50	151
2009	56	40	96
2008	77	4	81
5 Year Avg.	67	40	107

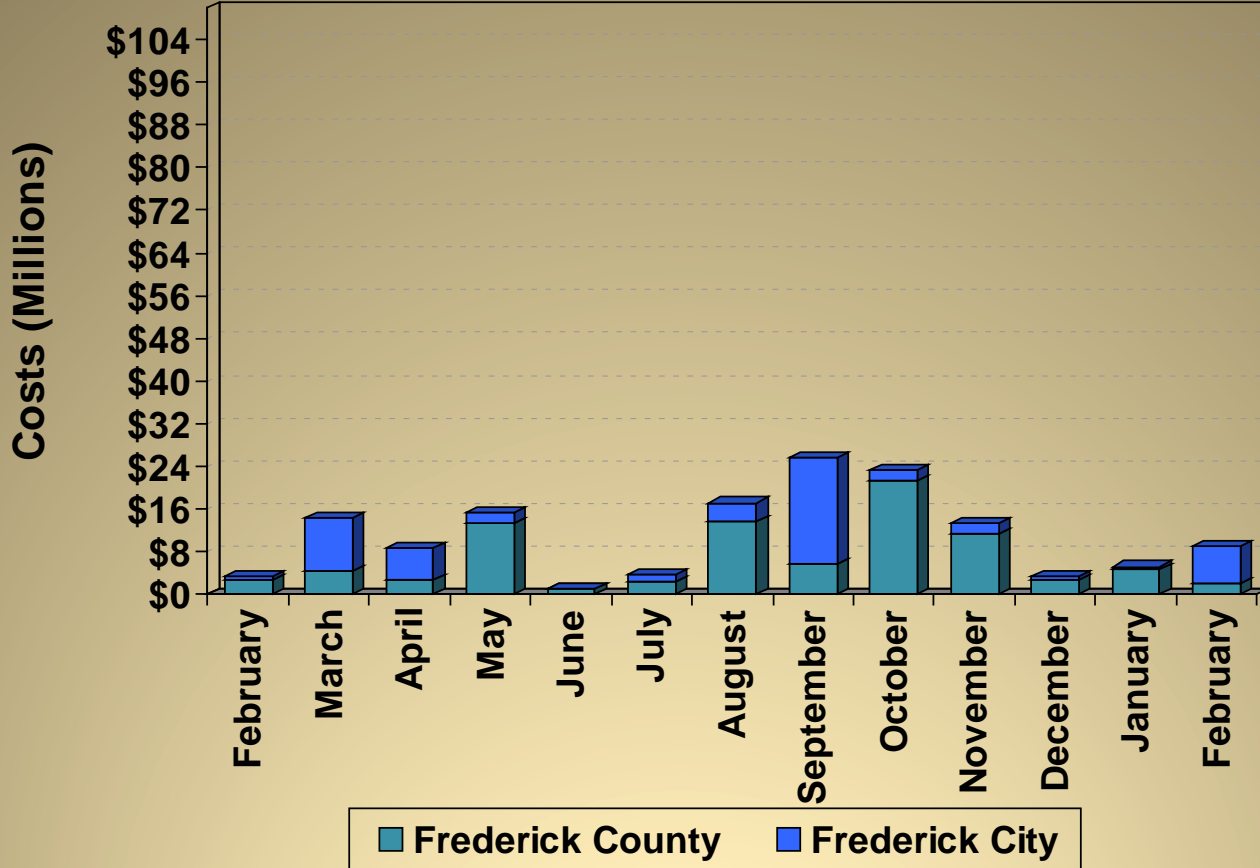
# Construction Costs 2011 - 2012



Costs based on issued permits

# Commercial Construction Costs

## 2011 - 2012



### Cost per month:

Costs based on issued permits

October 2011 Co. – Mount Saint Mary’s new (solar arrays) (\$19M)

October 2011 City – Medimmune, Inc (\$1.3M)

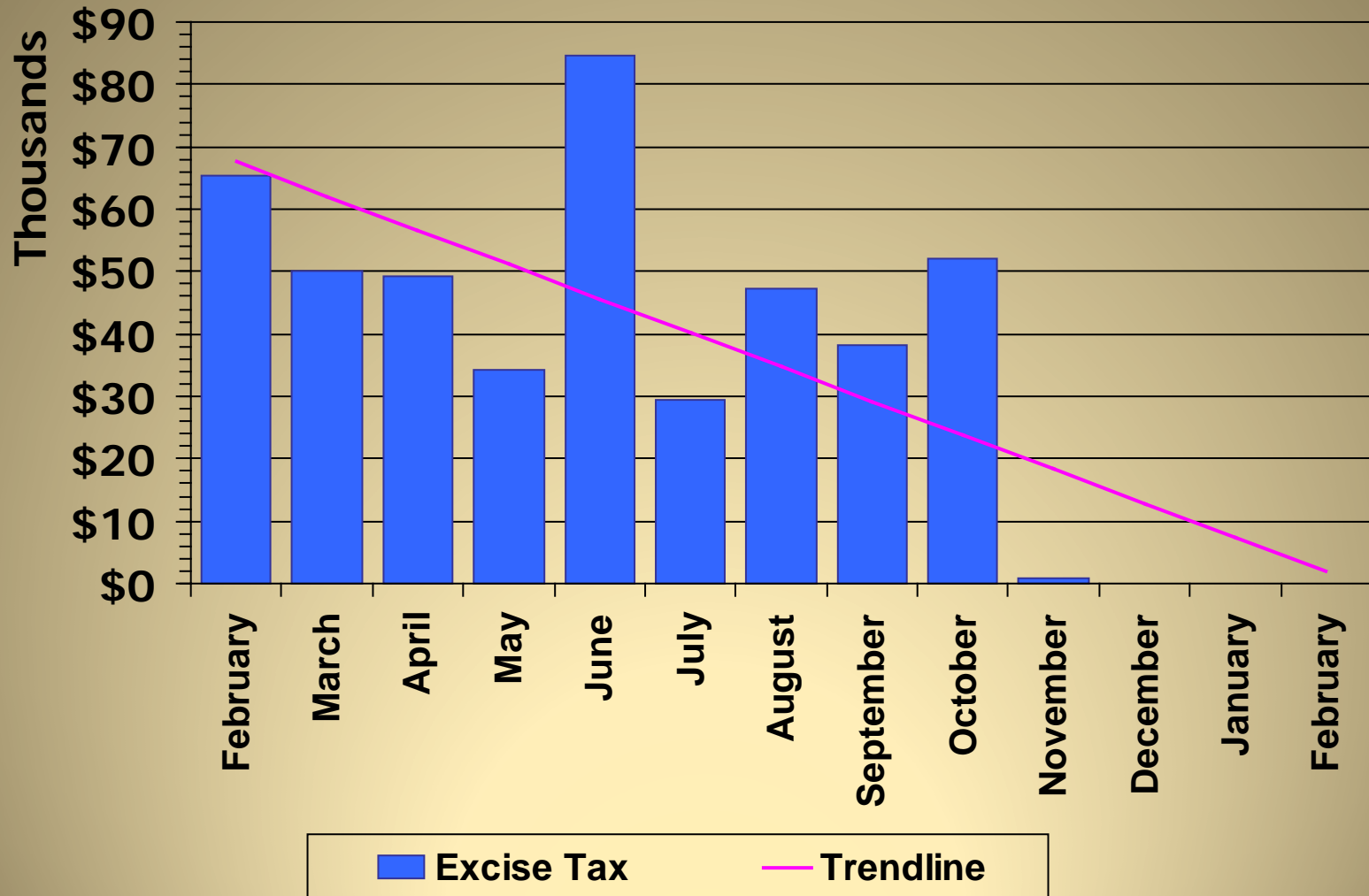
November 2011 Co. – Mount St. Mary’s University accessory (\$4.5M), Lonza Walkersville, Inc. alteration (\$2M), Tractor Supply Company addition (\$1.5M), Cong. Of Jehovah’s Witnesses new (\$1.2M)

December 2011 Co. – Brunswick Crossing, LLC new (\$1.5M)

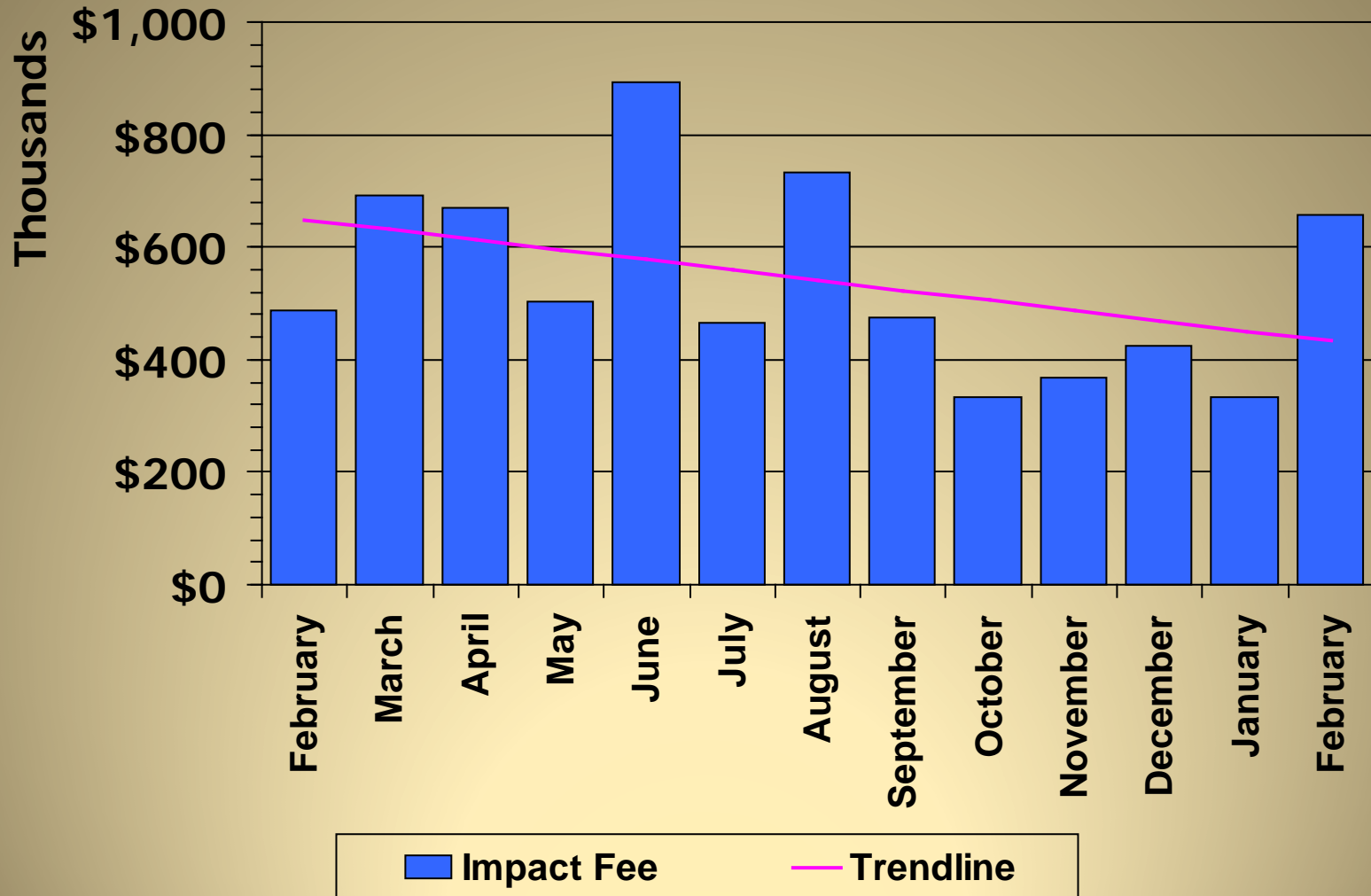
January 2012 Co. – Mount St. Mary’s University accessory (\$1.4M)

February 2012 City – Market Square at Frederick LLC new (\$5.1M)

# Excise Tax 2011 - 2012



# Impact Fee 2011 - 2012



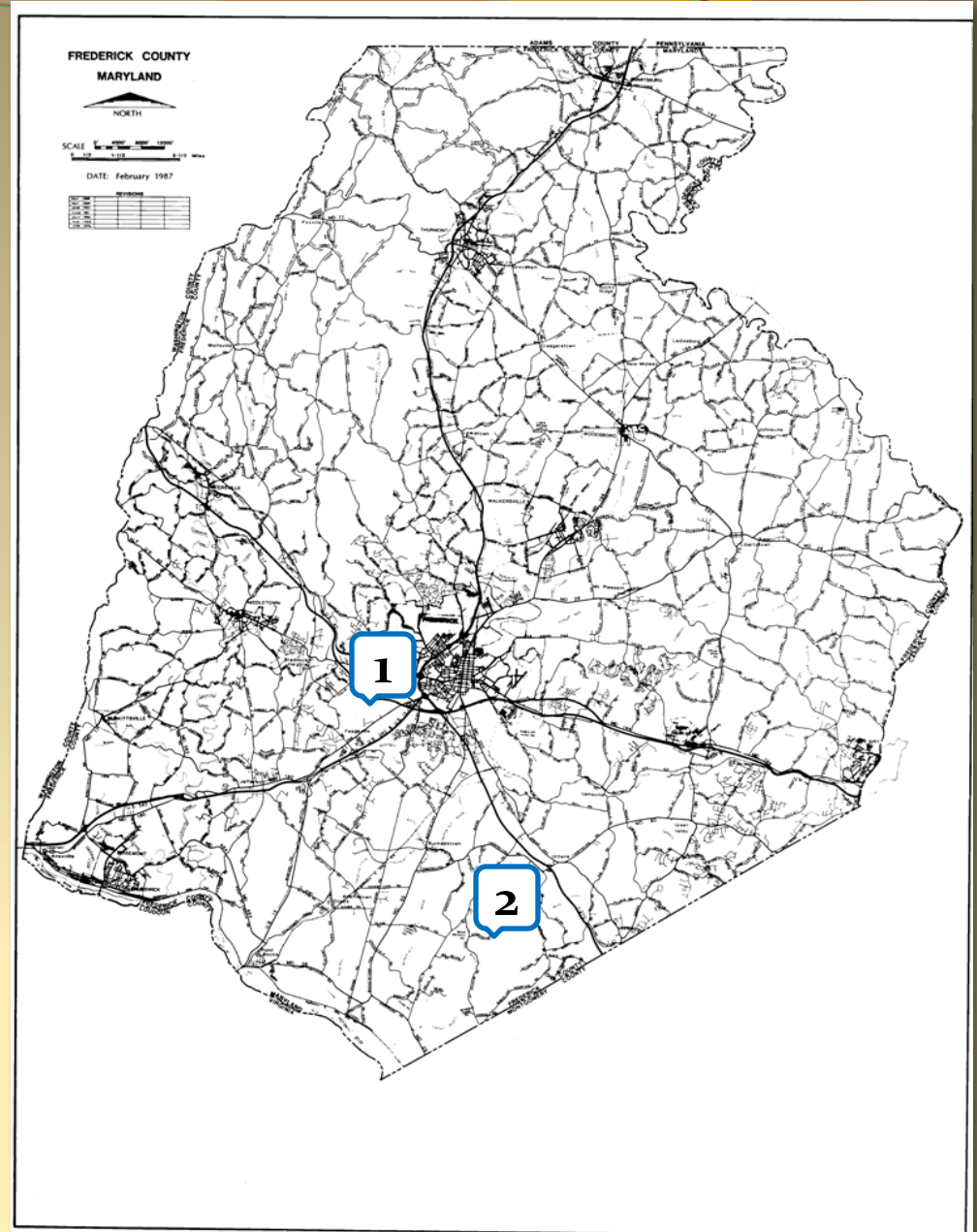


# LIST OF PROJECTS

(upcoming FcPc/BOA meetings)

## Projects in the County

1. B-12-04 Popular Ridge Subdivision c/o Dan Ryan Builders
2. B-12-05 Carolyn K. MacIntosh





# **Projects in the County**

# Board of Appeals

## **B-12-04 Poplar Ridge Subdivision c/o Dan Ryan Builders**

Requesting a 14.5 ft. variance from the required 15 ft. setback in order to place a community entrance sign, located on the southwest side of the intersection of Mt. Phillip Road and Maitland Terrace (Open Space Area F, Tax Map 76, Parcel 192) Zoned Agricultural (A)

## **B-12-05 Carolyn K. MacIntosh**

Requesting a special exception to establish an accessory apartment greater than 800 square feet, located on the east side of Park Mills Road, approximately ½ mile north of the Monocacy River, (1235 Park Mills Road, Tax Map 110, Parcel 33), Zoned Agricultural (A)