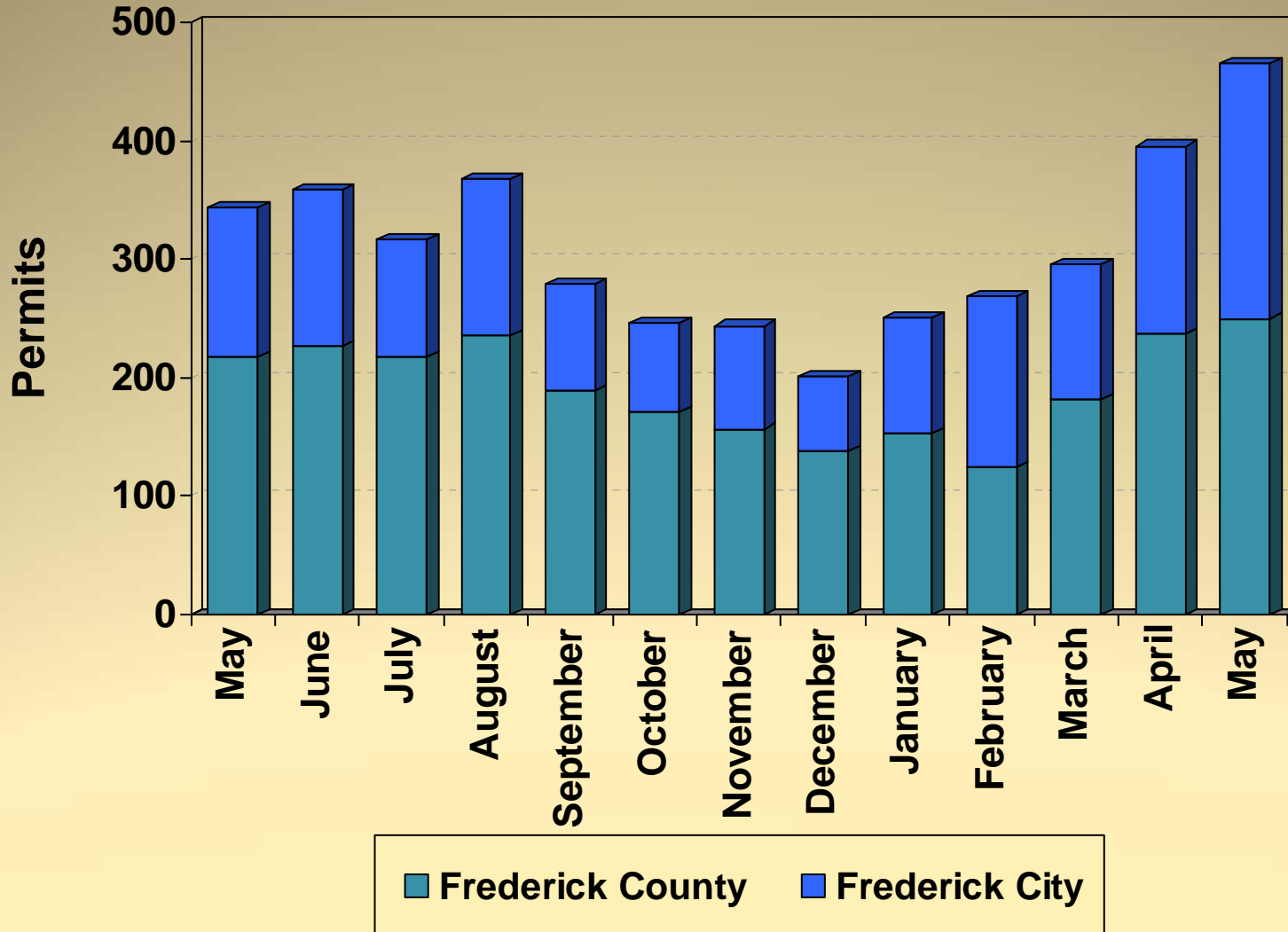


Community Development Division

- July 11, 2012
- Development Data/Project

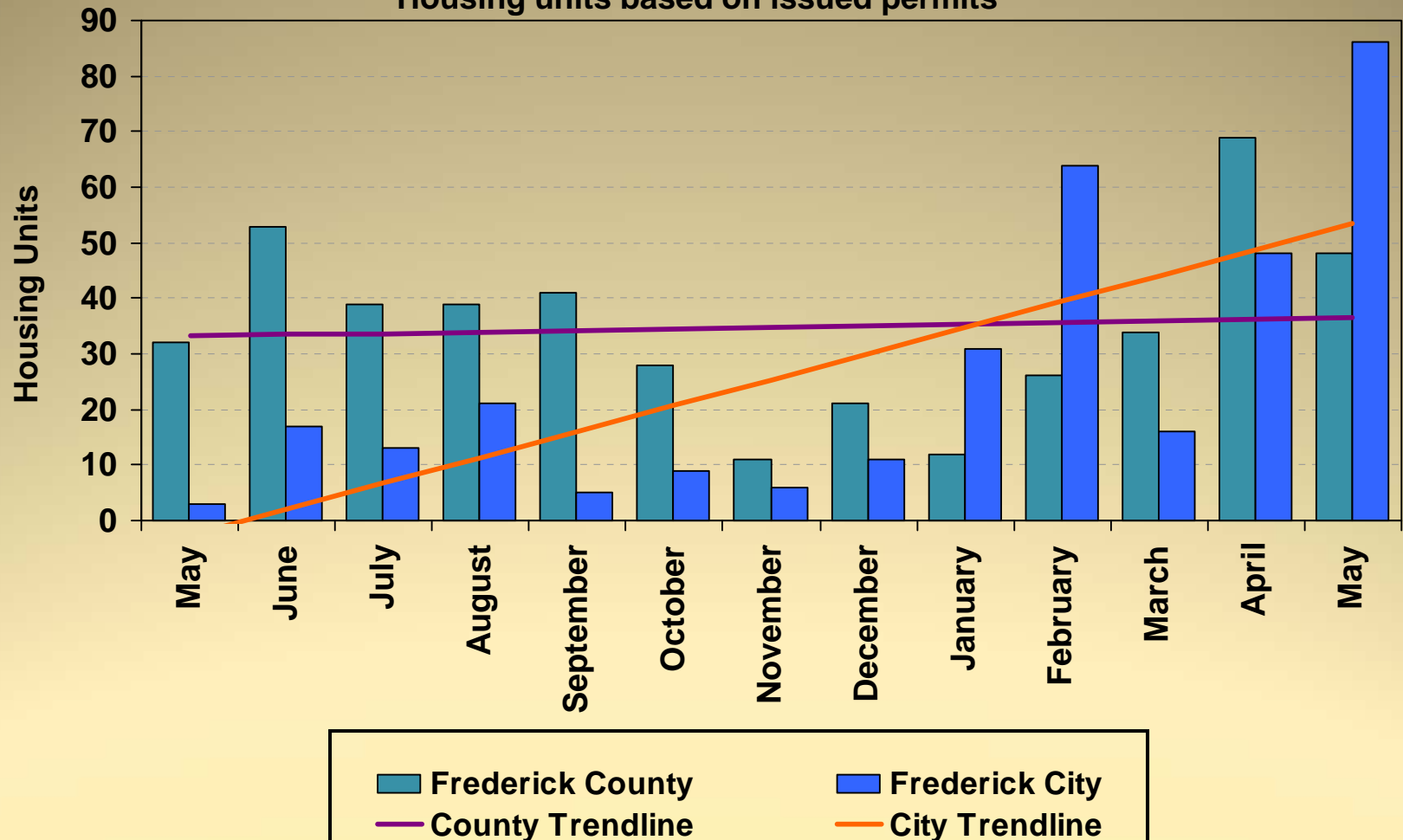


Building Permits Issued 2011 - 2012



Housing Unit Construction 2011 - 2012

Housing units based on issued permits



12 Month Total (May 2011 – April 2012): 748 Units

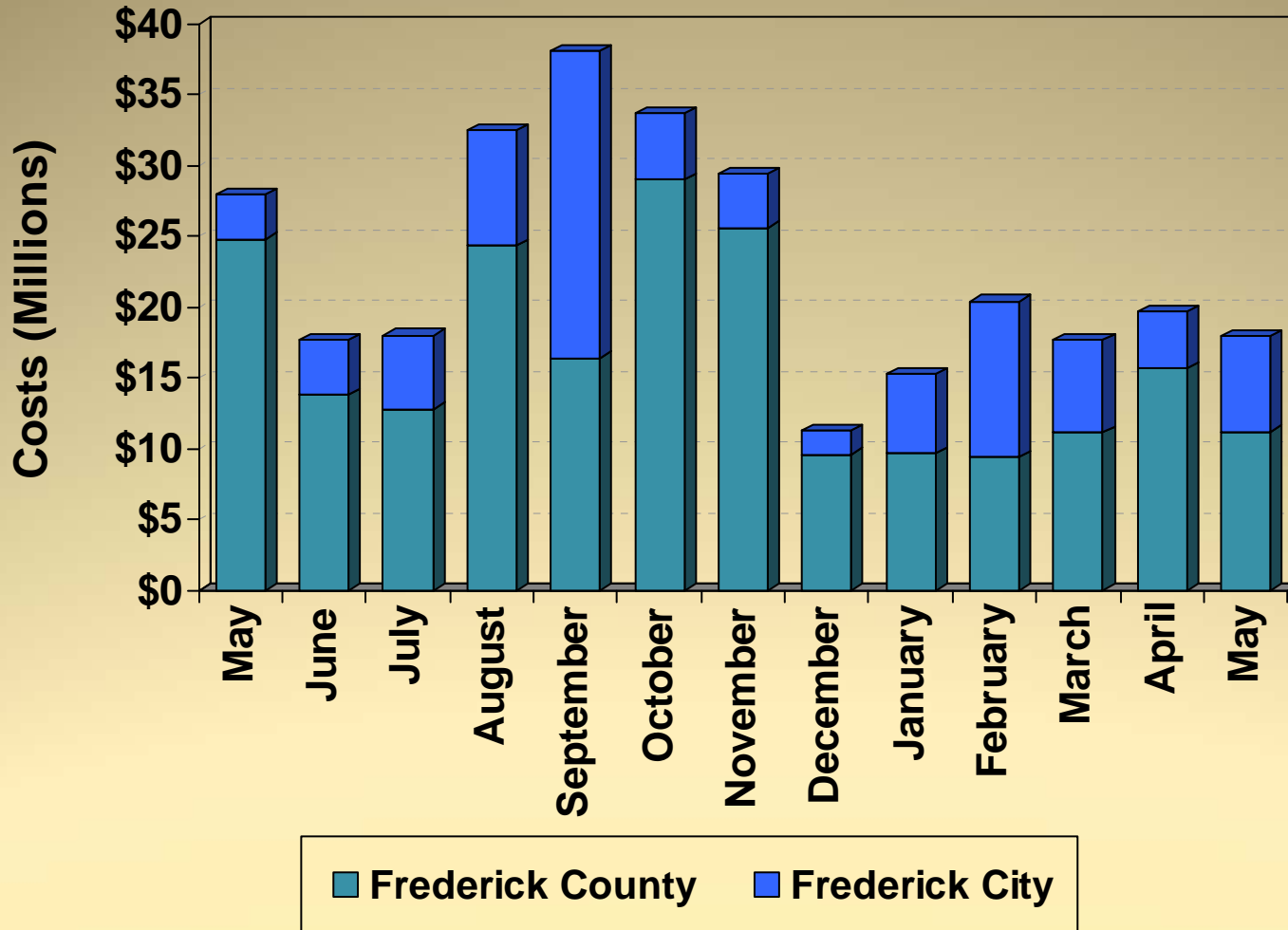
Housing Unit Construction

Comparison of Current Month and YTD Units

Current Month – May			
Year	County	City	Total
2012	48	86	134
2011	32	3	35
2010	49	8	57
2009	43	21	64
2008	35	3	38
5 Year Avg.	41	24	66

YTD – May			
Year	County	City	Total
2012	189	245	434
2011	192	27	219
2010	251	91	342
2009	186	82	268
2008	190	46	236
5 Year Avg.	202	98	300

Construction Costs 2011 - 2012

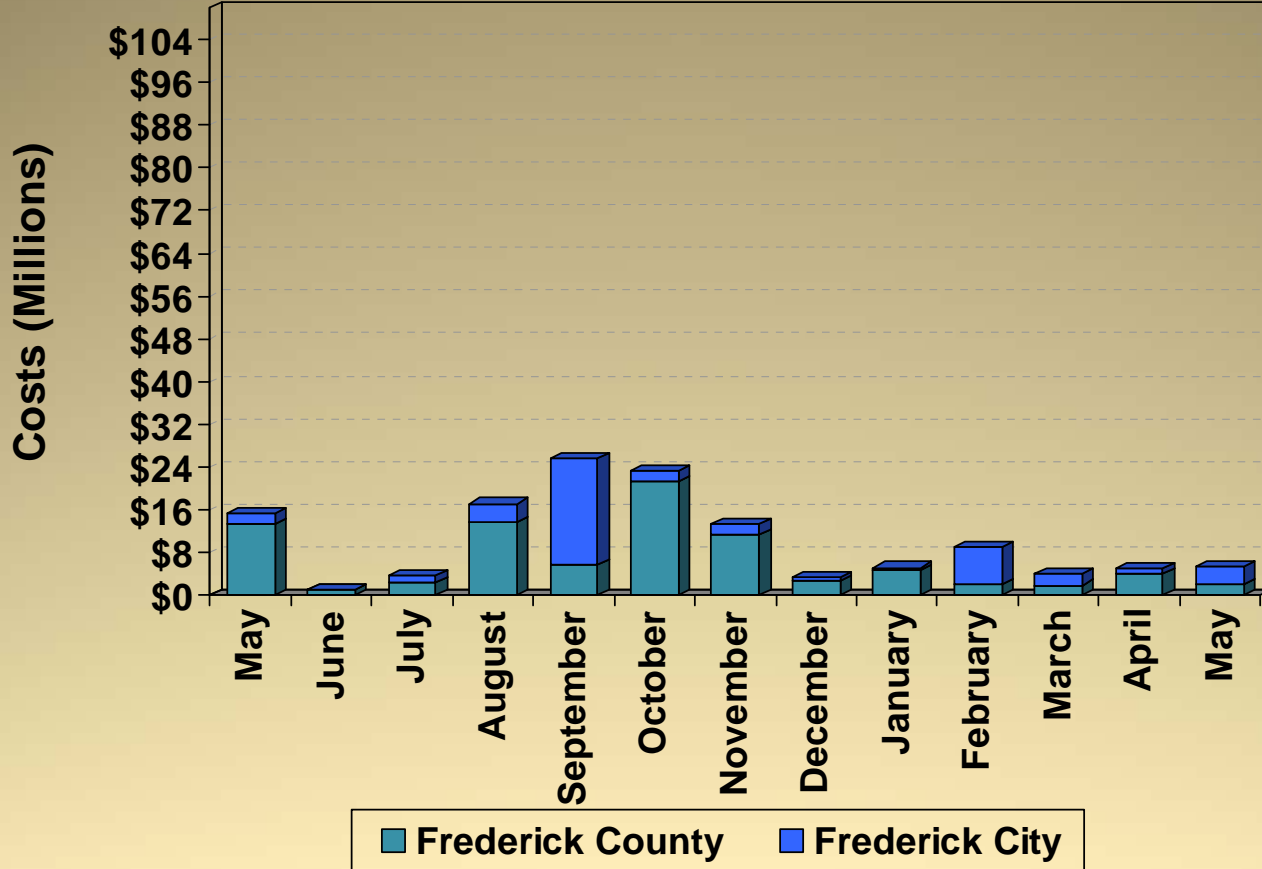


Frederick County Frederick City

Costs based on issued permits

Commercial Construction Costs

2011 - 2012



Cost per month:

Costs based on issued permits

October 2011 City – Medimmune, Inc (\$1.3M)

November 2011 Co. – Mount St. Mary’s University accessory (\$4.5M), Lonza Walkersville, Inc. alteration (\$2M), Tractor Supply Company addition (\$1.5M), Cong. Of Jehovah’s Witnesses new (\$1.2M)

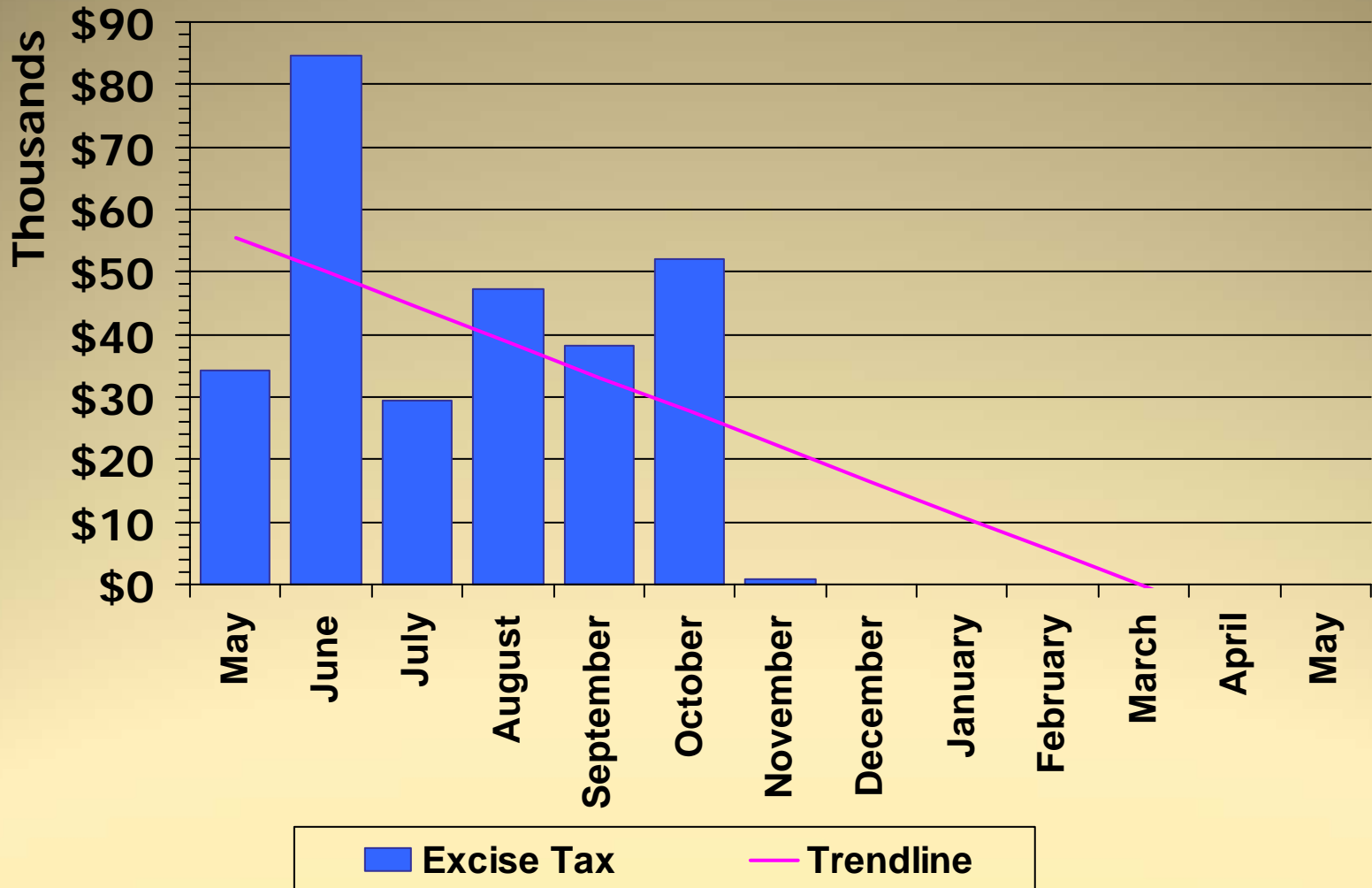
December 2011 Co. – Brunswick Crossing, LLC new (\$1.5M)

January 2012 Co. – Mount St. Mary’s University accessory (\$1.4M)

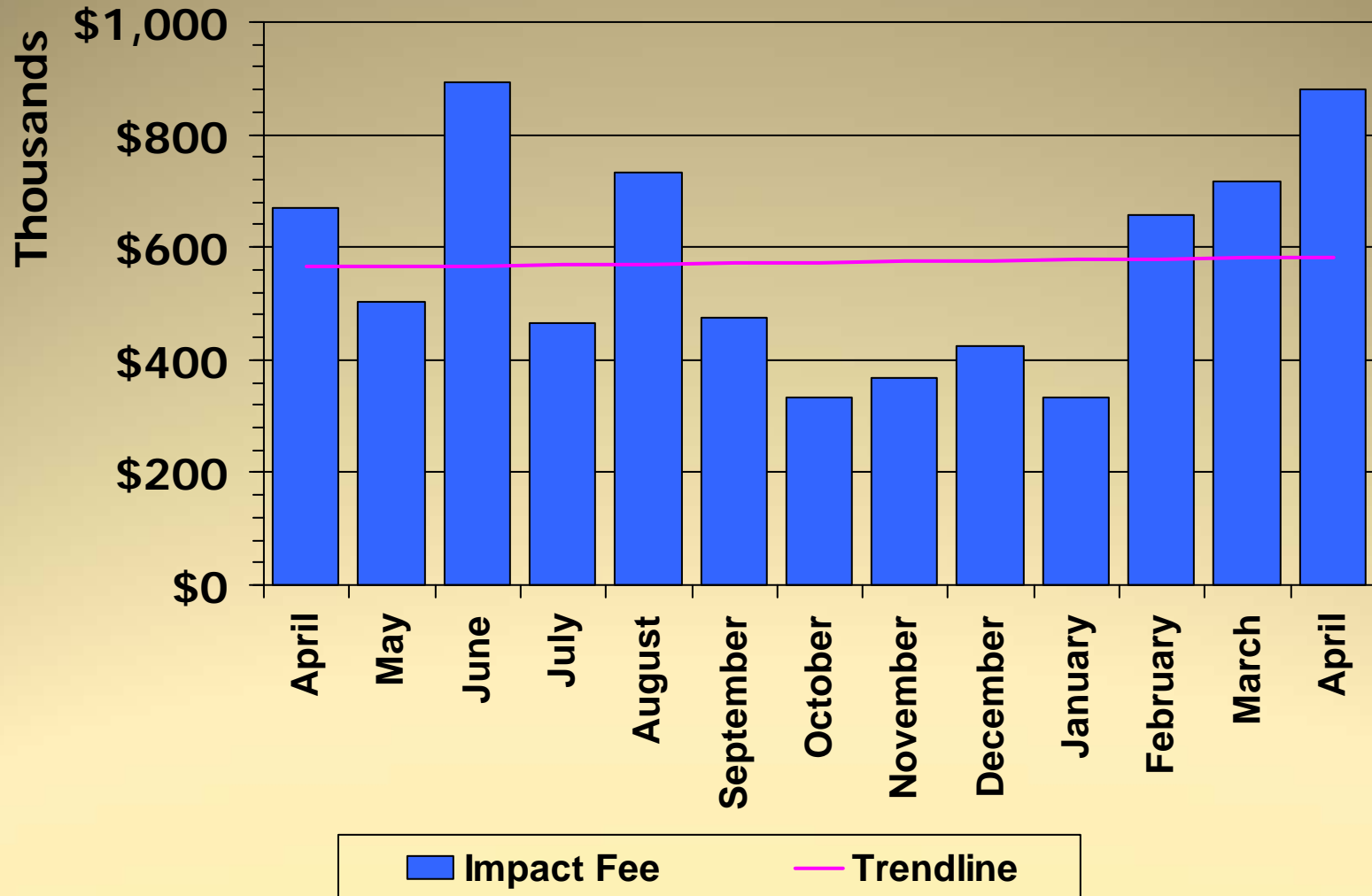
February 2012 City – Market Square at Frederick LLC new (\$5.1M)

April 2012 Co. – Mount Saint Mary’s Univ. Visitor Center new (\$2.3M)

Excise Tax 2011 - 2012



Impact Fee 2011 - 2012

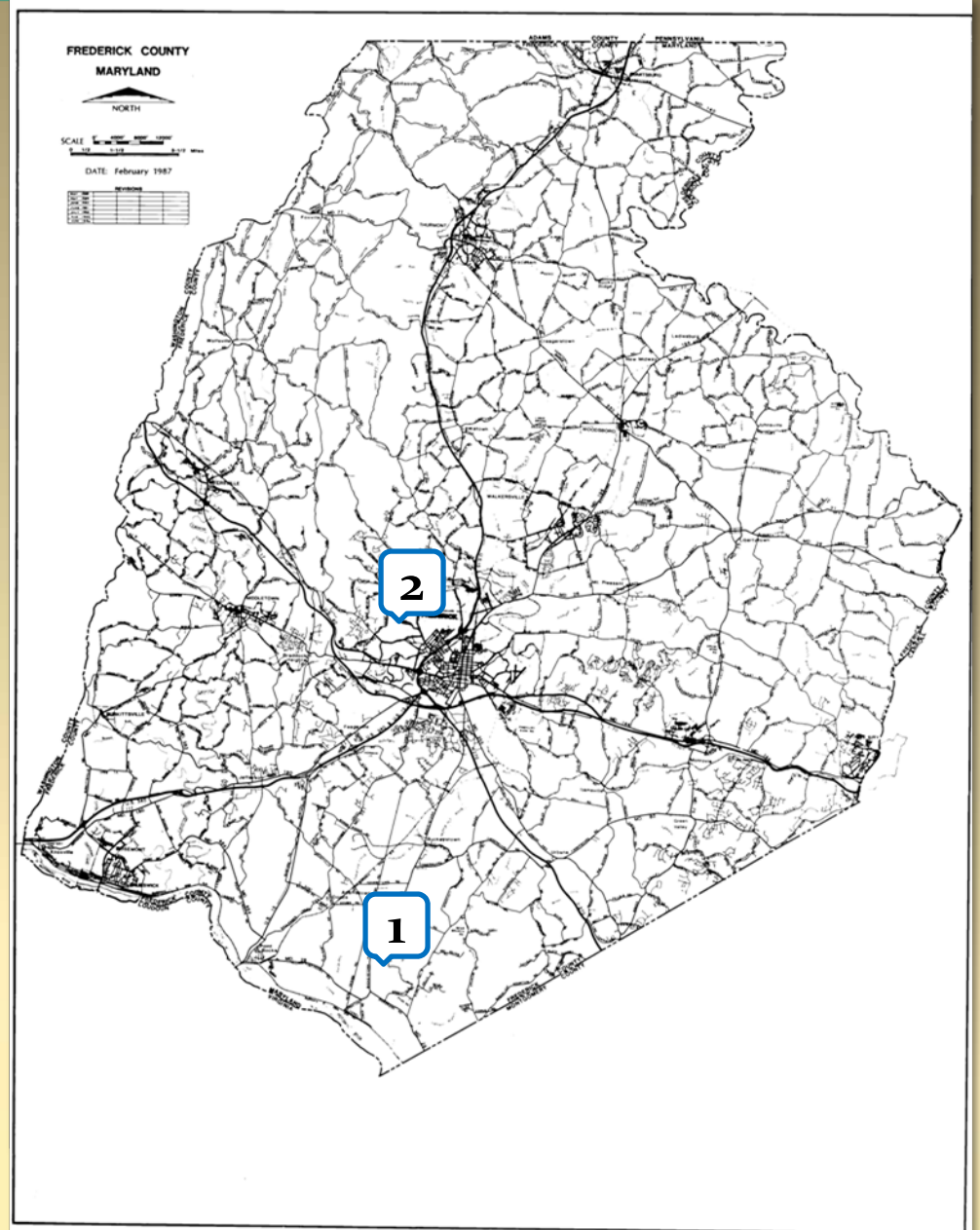


LIST OF PROJECTS

(upcoming FcPc/BOA meetings)

Projects in the County

1. B-12-06 Joseph Richardson
2. B-12-07 Great Southern Investment, LLC



Board of Appeals

B-12-06 Joseph Richardson

Requesting a special exception to expand a previously approved structure for a rustic/retreat camp/outdoor club (previous cases B-02-22 and B-06-38), located on the west side of Roderick Road, approximately 1 mile south of MD Route 80 (2914 Roderick Road, Tax Map 96 , Parcel 55) Zoned Agricultural (AG).

B-12-07 Great Southern Investment, LLC

Claim of Administrative Error relative to the May 30, 2012 decision of the Division of Permitting and Development Review in the approval of building permit # 100648 filed by New Cingular Wireless PCS, LLC to install twelve (12) panel antennae on an existing 204 ft. communications tower, located on the south side of Yellow Springs Road (8204 Yellow Springs Road, Tax Map 57, Parcel 110), Zoned Agricultural (AG).