

THE EFFECTIVE DATE OF THE RESOLUTION IS February 16, 2010

RESOLUTION NO. 10-02

RE: Dumpster Enclosure Guidelines

PREAMBLE

WHEREAS, the Board of County Commissioners ("Board") of Frederick County, Maryland, is engaging in an on-going update of Chapter 1-19 of the Frederick County Code (Zoning Ordinance) and has adopted Ordinance 10-01-536, which addresses requirements for parking, landscaping and lighting; and

WHEREAS, §1-19-6.210.(E) of the aforesaid Ordinance states, "*Refuse and Recycling*. Exterior refuse and recycling dumpsters shall be provided in accordance with the requirements of the Division of Utilities and Solid Waste Management"; and

WHEREAS, the Board desires to have the Division of Utilities and Solid Waste Management ("DUSWM") establish *Guidelines* that are not intended to restrict design professionals in their opportunity to create innovative, practical and economical dumpster enclosure(s), but to expand their opportunities to more efficiently and economically advance and optimize single-stream recycling, and other solid waste management collection aspects, when developing sites; and

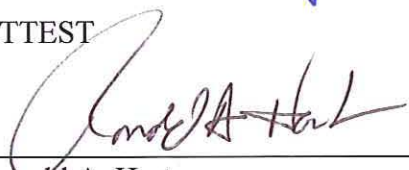
WHEREAS, the Board desires that DUSWM's design review role in §1-19-6.210.(E) to be basic and in an advisory role only; and

WHEREAS, the Board understands that the establishment of said *Guidelines* may need to be updated and or revised as necessary and that any subsequent updates and or revisions of the *Guidelines* be delegated to and under the authority of the Director of DUSWM; however, the Board desires to clarify that interpretations of, or deviations from §1-19-6.210, including subparagraph (E) are by the Zoning Administrator.

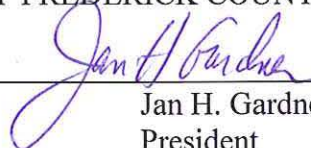
NOW, THEREFORE, BE IT RESOLVED BY THE BOARD OF COUNTY COMMISSIONERS OF FREDERICK COUNTY, MARYLAND, that the Dumpster Enclosure Guidelines, attached hereto, are approved and adopted.

16<sup>th</sup> The undersigned hereby certify that this resolution was approved and adopted on this day of February 2010.

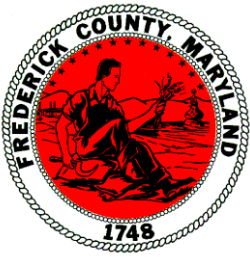
ATTEST

  
\_\_\_\_\_  
Ronald A. Hart  
County Manager

BOARD OF COUNTY COMMISSIONERS  
OF FREDERICK COUNTY, MARYLAND

  
\_\_\_\_\_  
Jan H. Gardner  
President

MJC 2/16/10



## DUMPSTER ENCLOSURE GUIDELINES

These guidelines are not intended to restrict the design professional in their opportunity to create innovative, practical and economical dumpster enclosure(s), but to expand their opportunities to more efficiently and economically advance and optimize single-stream recycling, and other solid waste management collection aspects, when developing a site within the suggested framework of certain design concepts outlined below.

### A. ESTIMATING ENCLOSURE SIZE

The section below outlines how to estimate a proper enclosure size when you do not know the volume of waste and recyclables that may be generated.

1. Determine what types of waste materials will be collected from the facility. While it is assumed that regular trash, or municipal solid waste (MSW) will be generated, additional consideration is suggested for the type and volume of recyclables that may be generated and the frequency of collection for MSW and or recyclables.
2. Determine the building use and size. Table A estimates the enclosure sizes and MSW generation.

### B. ENCLOSURE LOCATION AND ACCESSIBILITY

All dumpster enclosures are required to have direct-access for collection trucks. Direct access means that the collection truck can drive directly at the dumpster, insert the forks into the sides of the dumpster without having to exit the truck again (since they already have to open the gate) to move the dumpster. A minimum straight approach of 50 feet typically is needed to line-up directly with the dumpster.

Enclosures with poor or limited accessibility or those having atypical orientations are not recommended and may need customized design features to avoid possible driver injury and/or property damage. In addition, if a driver is required to move or push the dumpster for servicing, additional space may be needed. The designer should consult with several local waste haulers prior to initiating a custom design.

Typically, it is difficult and dangerous for a collection truck to back up. Providing a turnaround (or a separate exit) that allows the truck to move forward rather than backwards is preferred. A maximum back-up distance is 50 feet for any vehicular maneuver, and should be in a straight line, when possible.

Dumpsters shall not be located in front of fire hydrants and additional consideration should be taken into account for any surrounding known fire hazards.

Enclosures should not be installed behind parking spaces, if possible.

While not required, a concrete apron approach is recommended.

Overhead obstructions (e.g. power, telephone, cable, eaves, overhangs, etc.) should be taken into consideration relative to the dumping action of the collection truck.

### C. TURNING RADII FOR ACCESS TO ENCLOSURE

For planning purposes the turning radii should be adequate for a 3-axle truck. The overall length, including the lifting forks is typically 36 feet. Minimum outside turning radius is 46.5 feet. Please detail this on your submitted plans.



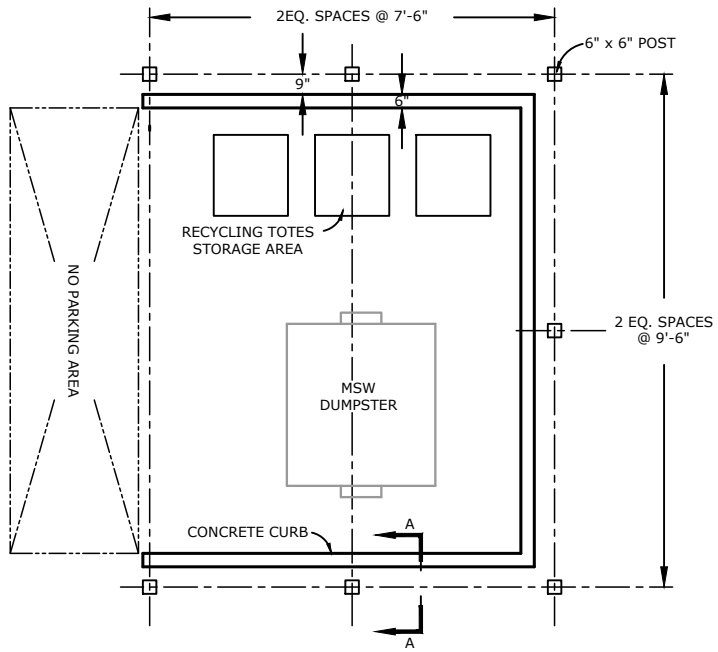
**TABLE A****Enclosure Size by Building Use, Square Footage, and Estimated Weekly Generation**

Business / Land Use	Size/Quantity (sq. ft.)	Minimum Enclosure Size (Exhibit #)	Estimated Weekly Generation*
Office, Retail, Industrial and General Commercial**	Less than 10,000 ft <sup>2</sup>	1A or 1B	4 yd <sup>3</sup>
Office, Retail, Industrial and General Commercial**	10,000 - 20,000 ft <sup>2</sup>	2A or 2B	8 yd <sup>3</sup>
Office, Retail, Industrial and General Commercial**	over 20,000 ft <sup>2</sup>	3A or 3B	12 yd <sup>3</sup>
Multi-Unit Residential	20 units, or less	1A	8 yd <sup>3</sup>
Multi-Unit Residential	each additional 20 units	2A	8 yd <sup>3</sup>
Food Facilities	less than 8,000 ft <sup>2</sup>	1B	4 yd <sup>3</sup>
Food Facilities	8,000 -16,000 ft <sup>2</sup>	2B	8 yd <sup>3</sup>
Food Facilities	over 16,000 ft <sup>2</sup>	3B	12 yd <sup>3</sup> , or more

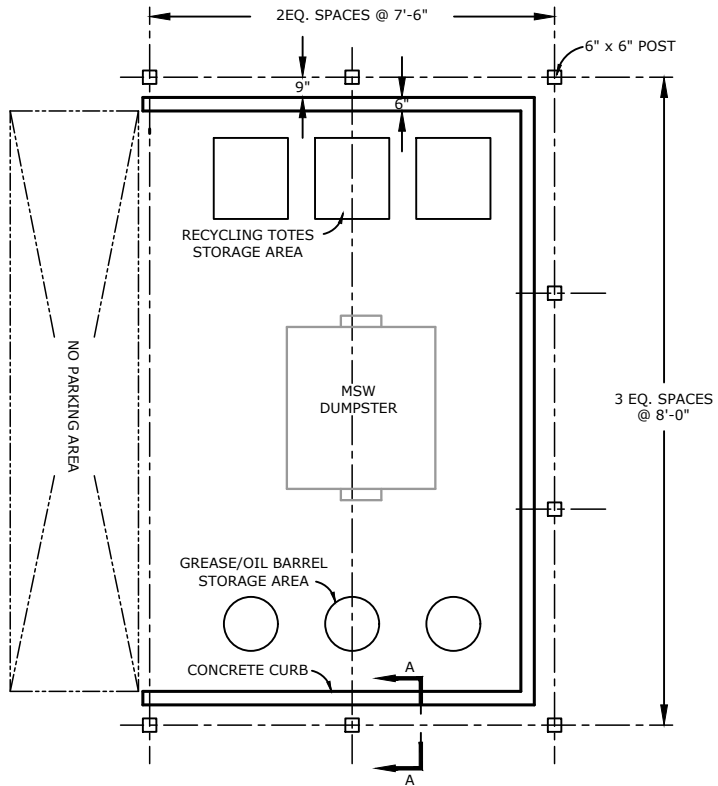
\* Generation assumes waste and recycling.

\*\* Food facilities within these businesses should consider the storage requirements if grease containers will be used and if the facility generates enough food waste.

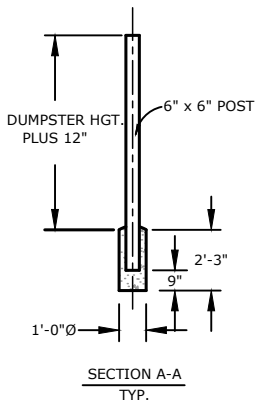




**EXHIBIT 1A**



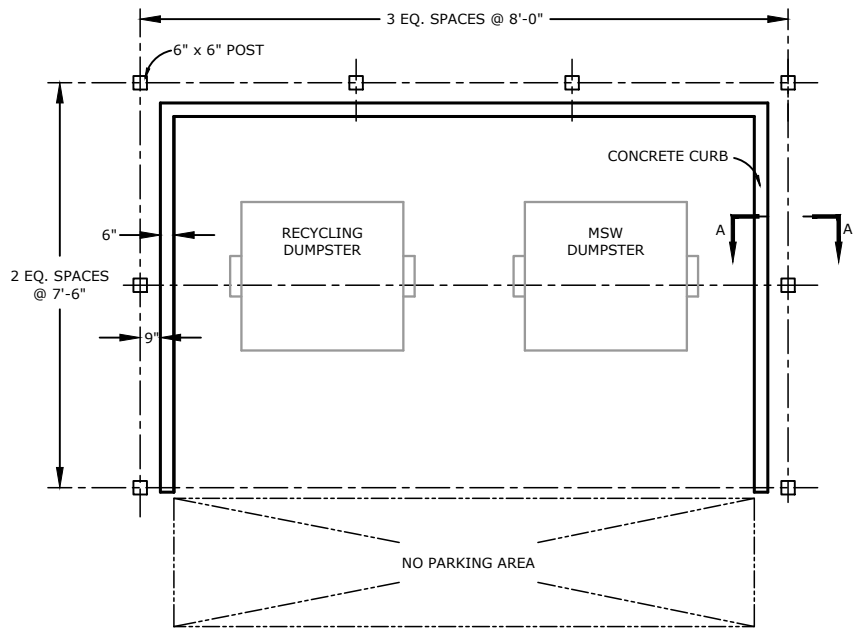
**EXHIBIT 1B**



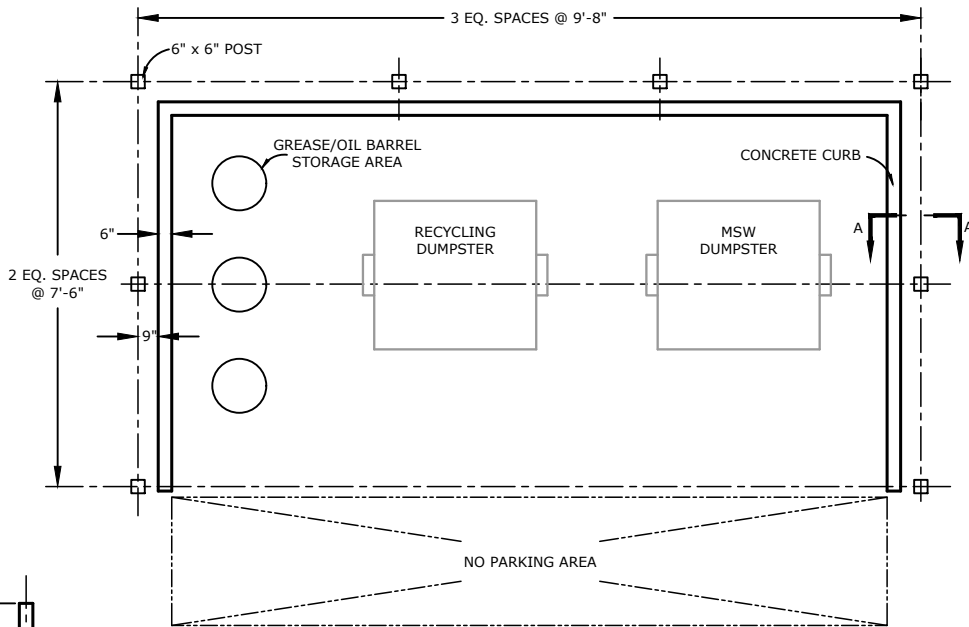
Revisions	
Date	Note

**Single Dumpster Enclosure  
Space Planning Guidelines**

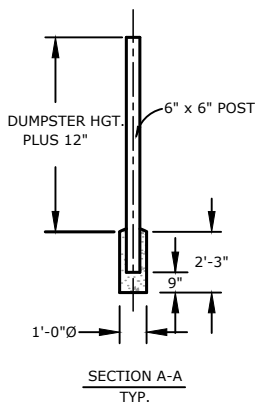
Exhibit  
**1**  
Date: 09-03-09



**EXHIBIT 2A**



**EXHIBIT 2B**



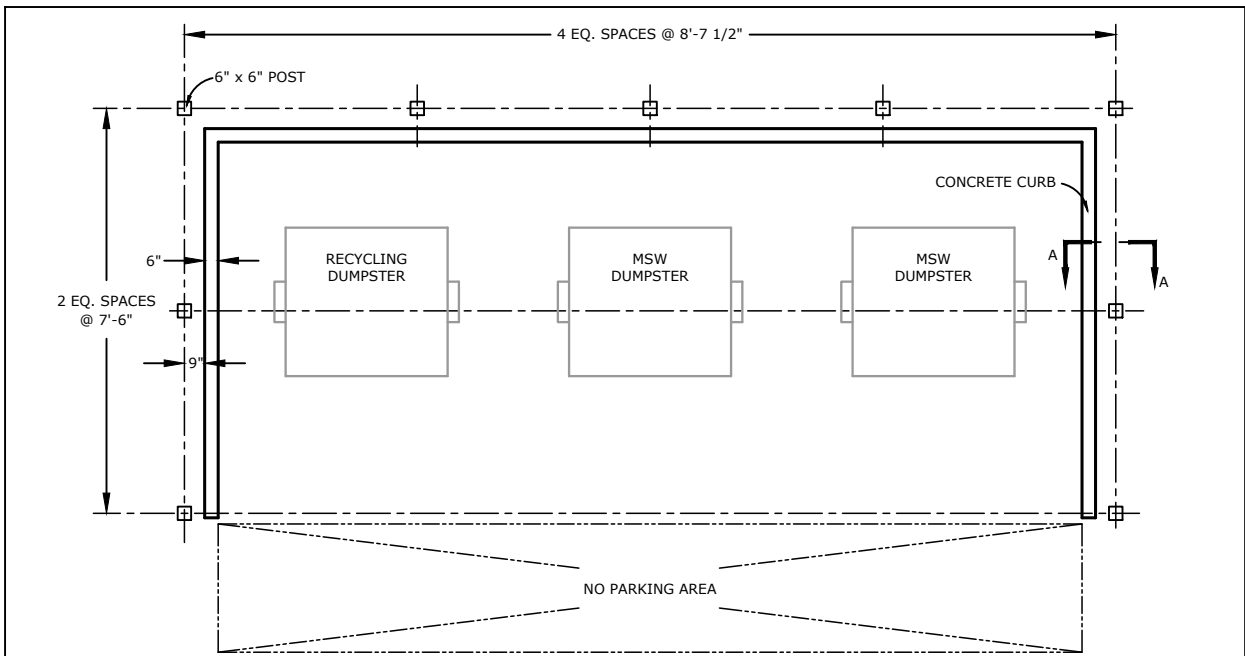
Revisions	
Date	Note

**Double Dumpster Enclosure  
Space Planning Guidelines**

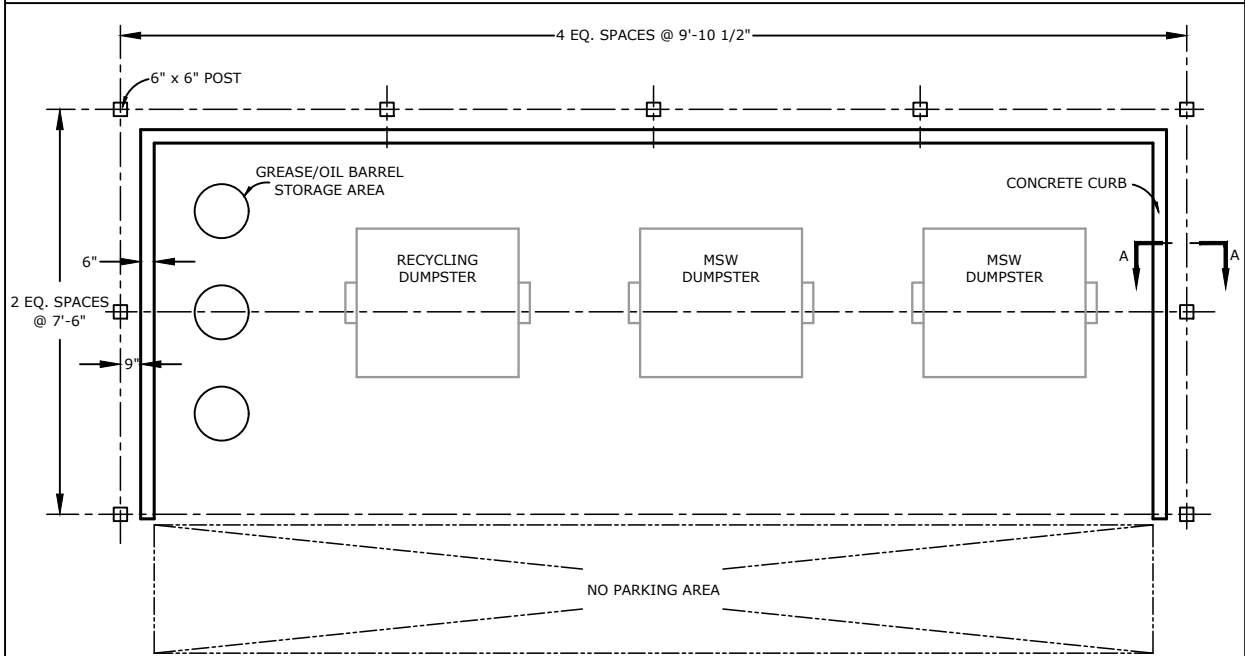
Exhibit

2

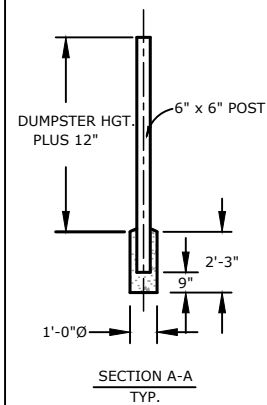
Date: 09-03-09



**EXHIBIT 3A**



**EXHIBIT 3B**



Revisions	
Date	Note

**Triple Dumpster Enclosure  
Space Planning Guidelines**

Exhibit

3

Date: 09-03-09