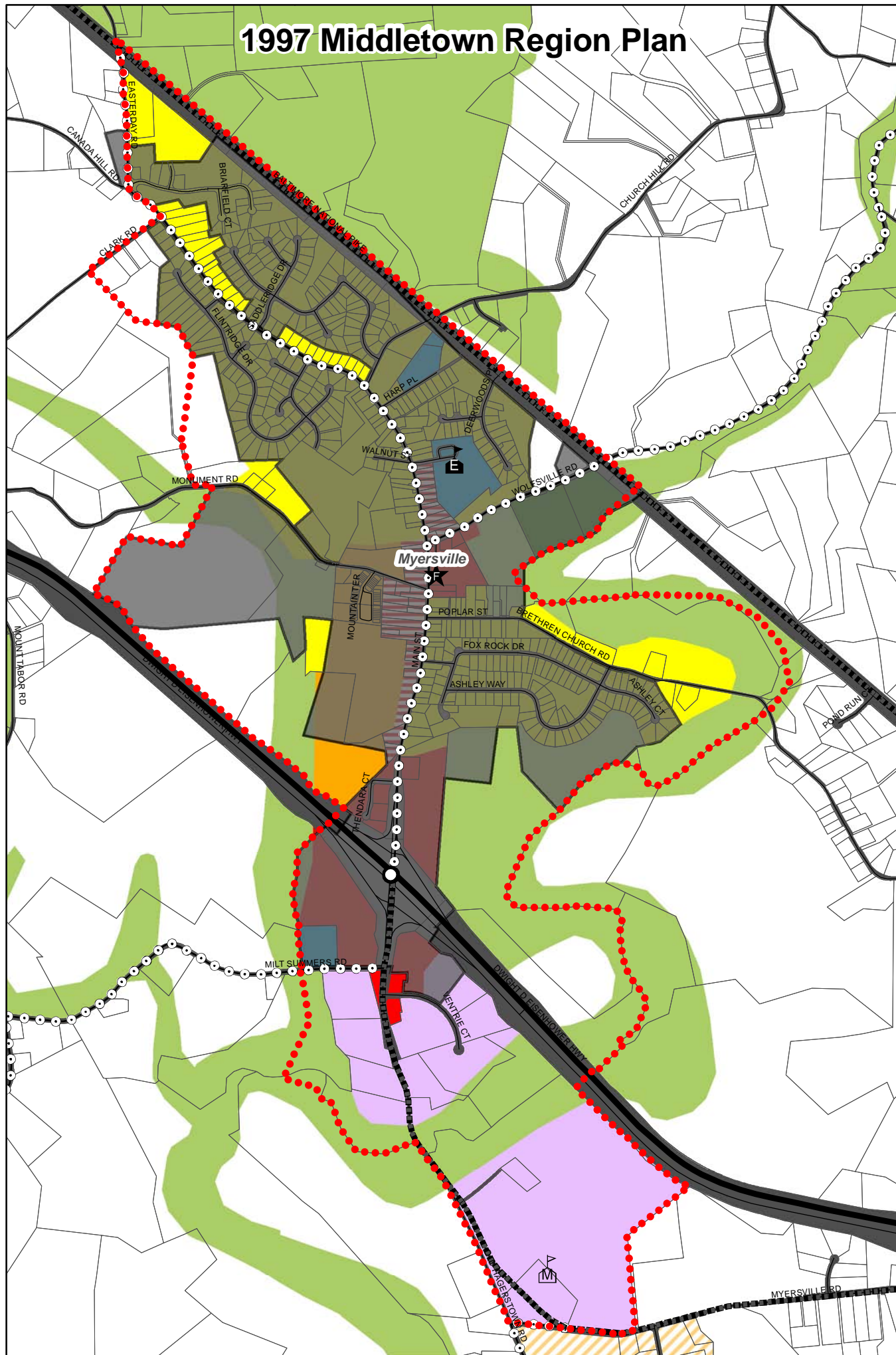
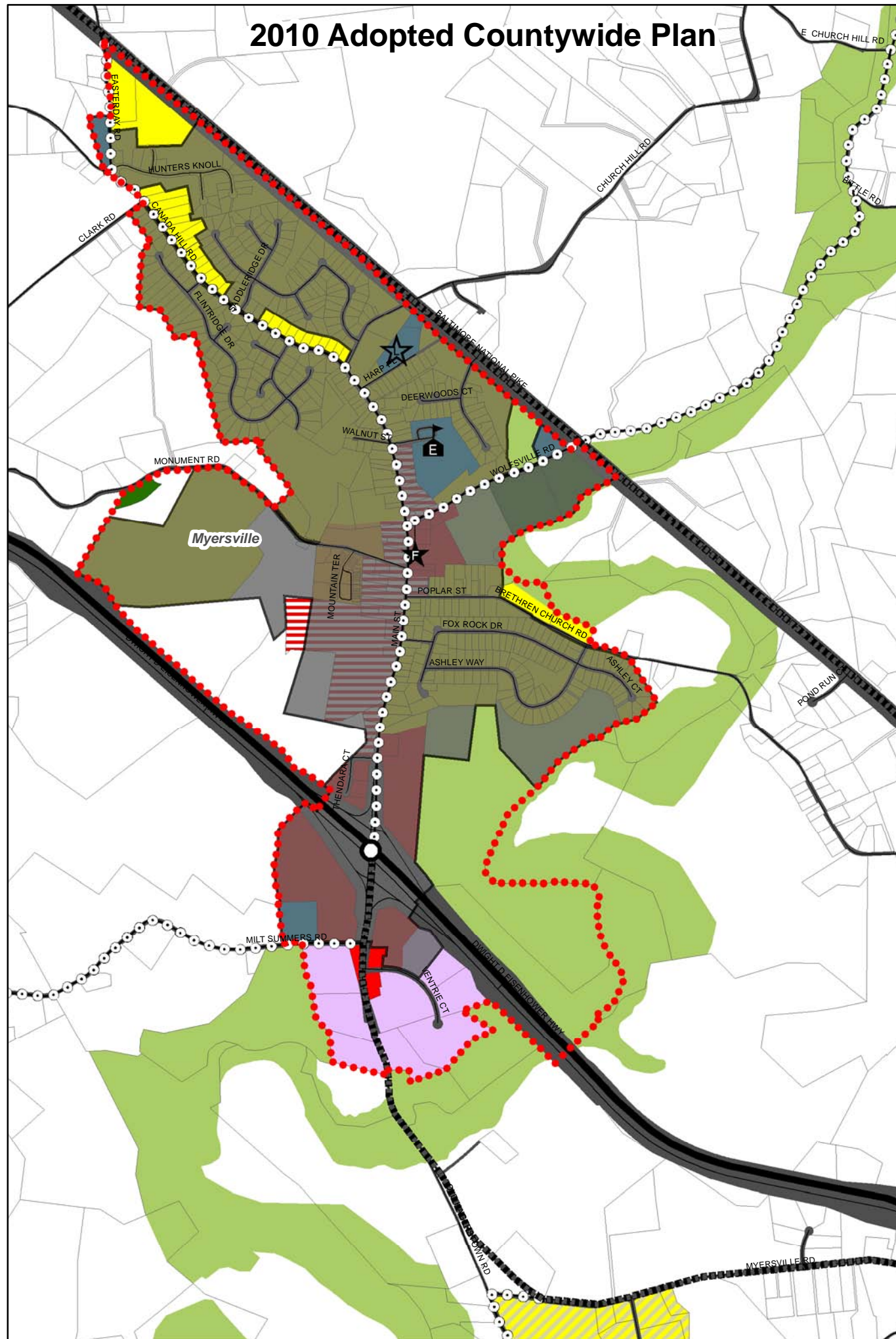


1997 Middletown Region Plan



2010 Adopted Countywide Plan



Land Use Plan Designation

- Agricultural/Rural
- Natural Resources Adopted Plan Only
- Public/Quasi Public Parkland/Open Space
- Rural Residential Adopted Plan Only
- Rural Subdivision Previous Plan Only
- Rural Neighborhood Previous Plan Only
- Rural Hamlet Previous Plan Only
- Rural Community
- Low Density Residential
- Medium Density Residential
- High Density Residential
- Village Center/Town Center
- Highway Service Previous Plan Only
- Commercial Rural Previous Plan Only
- General Commercial
- Limited Industrial
- Office/Research
- General Industrial
- Mineral Mining
- Institutional
- Community Growth Limit

COMMUNITY FACILITIES *

Existing	Proposed	
		Schools
		Elementary (E)
		Middle (M)
		High (H)
		Park
		Community (C)
		Regional (R)
		Special (S)
		Fire Station (F)
		Library (L)
		Transit Station (T)
		Police Station (P)

Highways

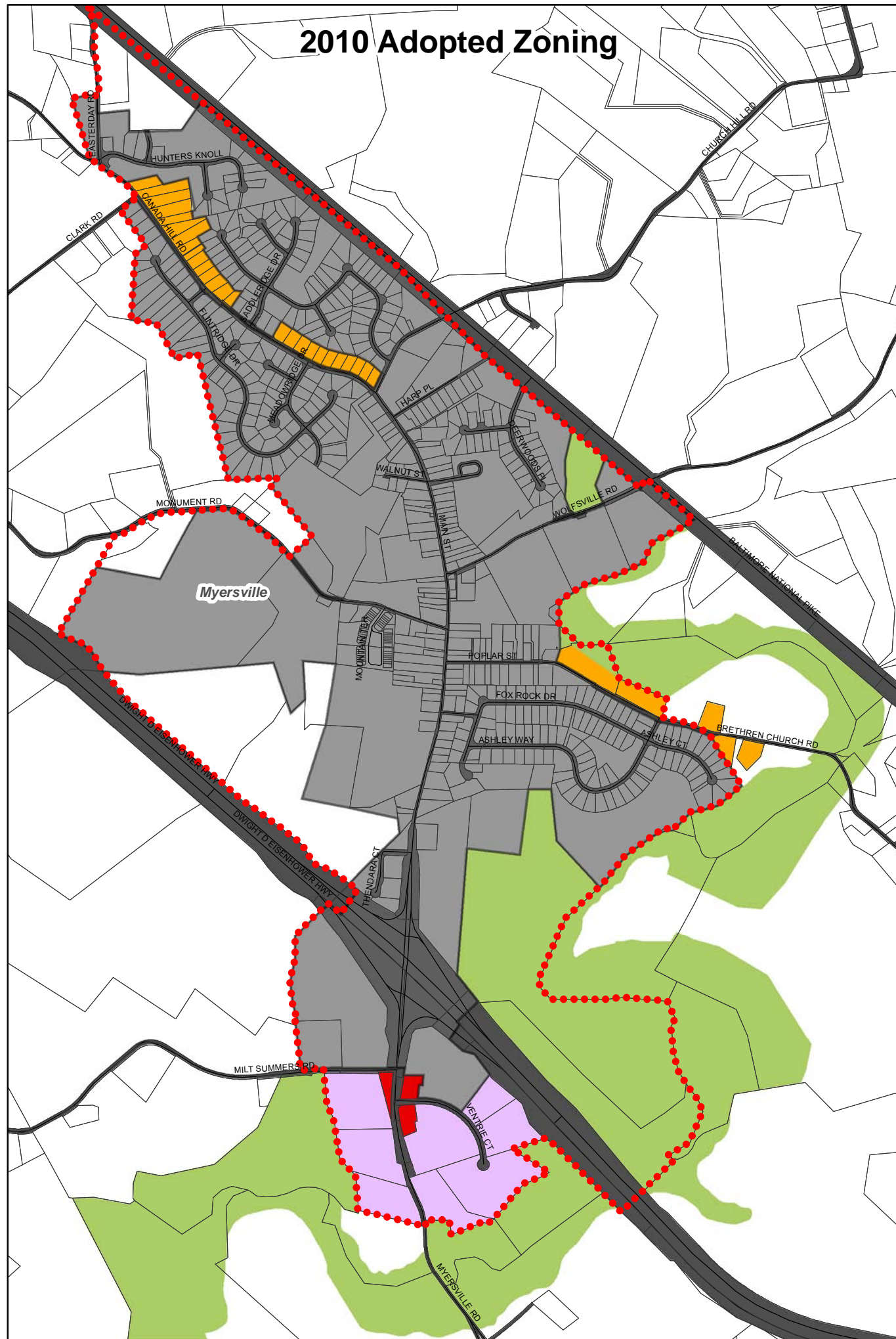
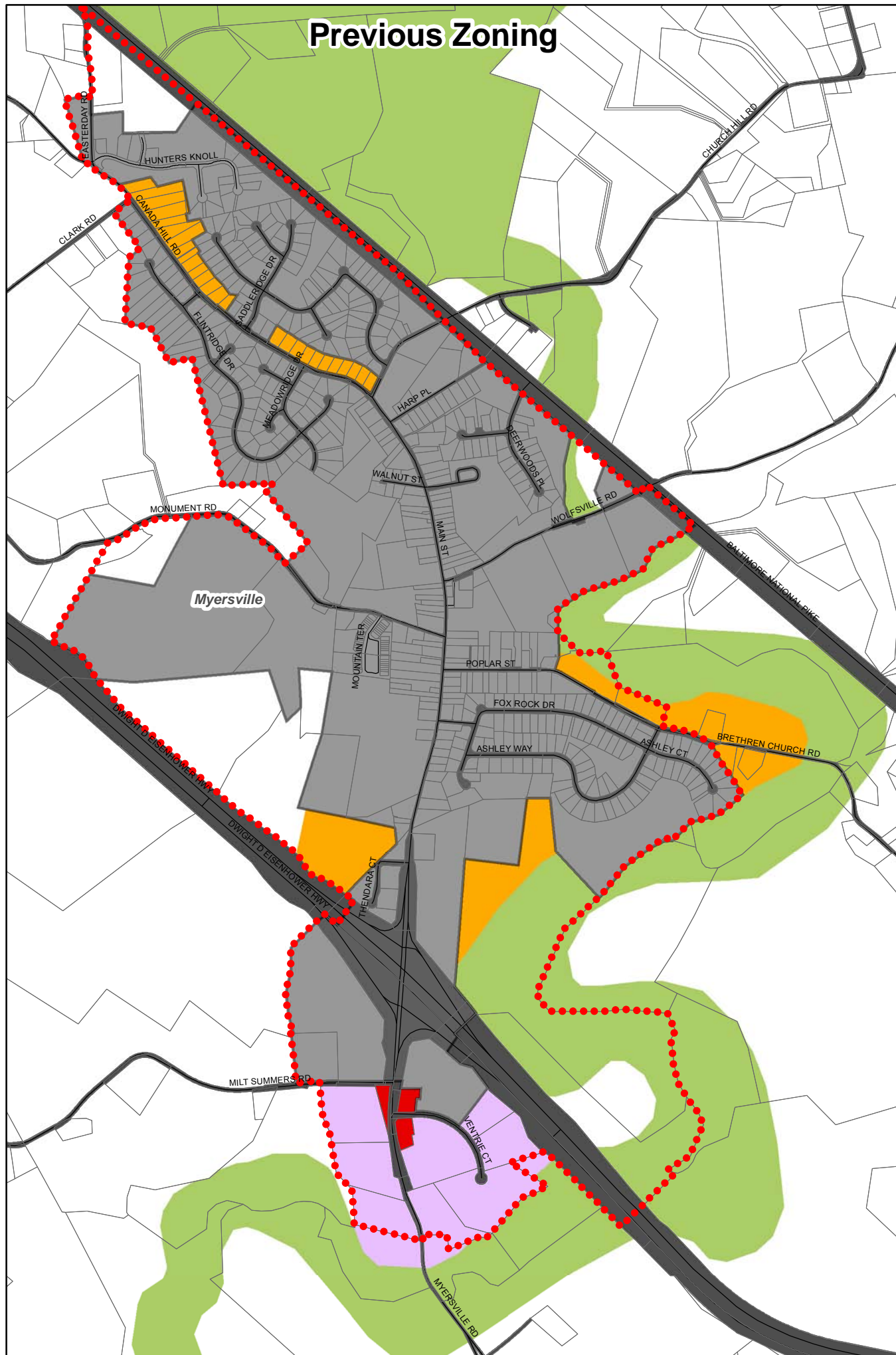
Existing	Proposed	Classification	Right-of-Way
		Freeway/Expressway	150' - 300'
		Major Arterial	100' - 150'
		Minor Arterial	80'
		Collector	60'
		Local	50'
		Interchange	AS NECESSARY

North arrow and scale bar (0 to 2,000 feet). Frederick County GIS logo.

Myersville Land Use Plan April 8, 2010

While efforts have been made to ensure the accuracy of this map, Frederick County accepts no liability or responsibility for errors, omissions, or positional inaccuracies in the content of this map. Reliance on this map is at the risk of the user. This map is for illustration purposes only and should not be used for surveying, engineering, or site-specific analysis.

Prepared by Frederick County Division of Planning
April 14, 2010



Zoning Classification

- A – Agricultural
- RC – Resource Conservation
- R1 – Low Density Residential
- R3 – Low Density Residential
- R5 – Medium Density Residential
- R8 – Medium Density Residential
- R12 – High Density Residential
- R16 – High Density Residential
- PUD – Planned Unit Development
- VC – Village Center
- GC – General Commercial
- GI – General Industrial
- LI – Limited Industrial
- ORI – Office/Research/Industrial
- MXD – Mixed Use Development
- MM – Mineral Mining

Zoning Classification Changes

- HS – Highway Service
Current Zoning Only
- Ie – Institutional
Draft Zoning Only

- Municipality
- April 8, 2010 Adopted
Community Growth Boundary

0 550 1,100 2,200 Feet

Myersville Zoning April 8, 2010

While efforts have been made to ensure the accuracy of this map, Frederick County accepts no liability or responsibility for errors, omissions, or positional inaccuracies in the content of this map. Reliance on this map is at the risk of the user. This map is for illustration purposes only and should not be used for surveying, engineering, or site-specific analysis.

Prepared by Frederick County Division of Planning
April 15, 2010