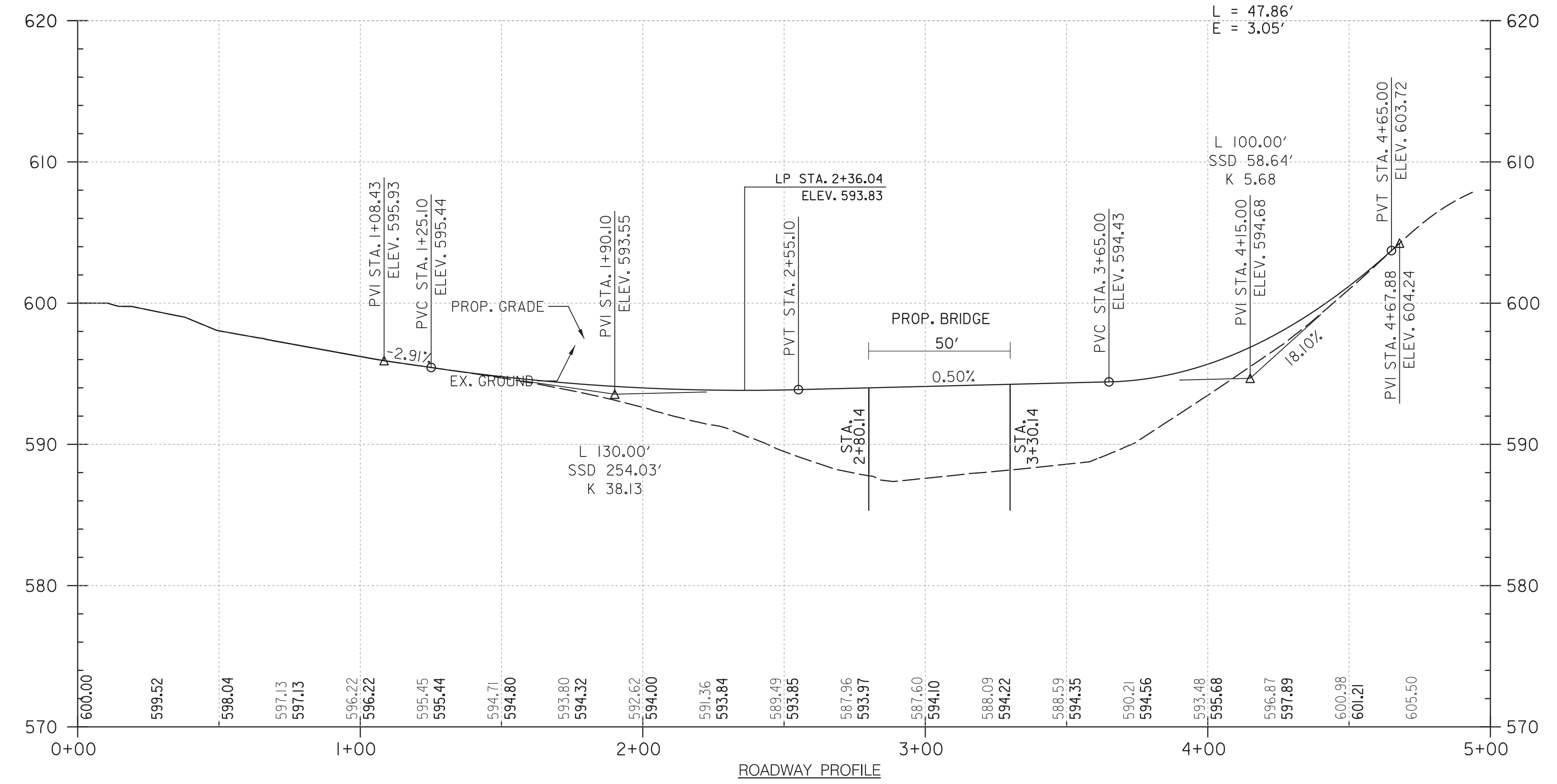
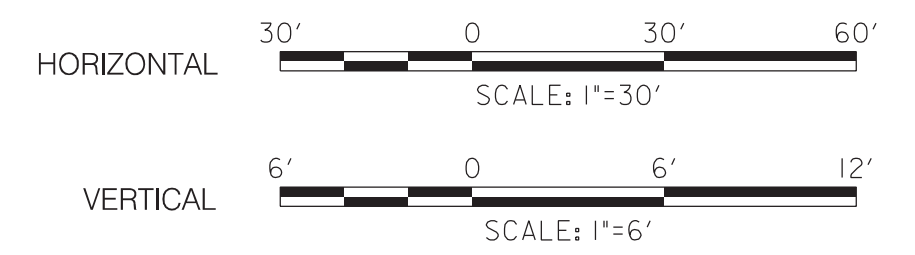


ROADWAY PLAN



ROADWAY LEGEND

- FULL DEPTH PAVEMENT
- MILL AND RESURFACE PAVEMENT
- LIMIT OF DISTURBANCE
- PROPOSED UNDERDRAIN
- WETLAND
- WATERS OF THE U.S.
- DITCH FLOW LINE



LOCATIONS OF EXISTING UTILITIES ARE SHOWN ONLY AS NOTIFICATION TO THE CONTRACTOR OF THE PRESENCE OF UNDERGROUND UTILITIES. FREDERICK COUNTY AND THE DESIGN ENGINEER DO NOT WARRANT OR GUARANTEE CORRECTNESS OR COMPLETENESS OF INFORMATION SHOWN. CONTRACTOR IS RESPONSIBLE FOR CONTACTING MISS UTILITY AT 1-800-257-7777 FOR VERIFYING EXISTING AND LOCATION OF ALL UTILITIES PRIOR TO BEGINNING WORK. ANY DAMAGE TO EXISTING UTILITIES DUE TO THE CONTRACTOR'S OPERATION SHALL BE REPAIRED IMMEDIATELY AT THE CONTRACTOR'S EXPENSE.

TRAFFIC BARRIER W-BEAM, 8 FOOT POST (MD 605.22 & MD 605.31)	
25 LF	STA. 2+18, 11' RT. TO STA. 2+43, 11' RT.
25 LF	STA. 3+51, 11' RT. TO STA. 3+76, 10' RT.
50 LF	STA. 3+67, 11' LT. TO STA. 4+17, 10' LT.

TRAFFIC BARRIER THRIE BEAM ANCHORAGE AT BRIDGE END POST (MD 605.511)	
1 EA	STA. 2+43, 11' RT. TO STA. 2+67, 12' RT.
1 EA	STA. 2+60, 11' LT. TO STA. 2+84, 12' LT.
1 EA	STA. 3+27, 12' RT. TO STA. 3+51, 11' RT.
1 EA	STA. 3+43, 12' LT. TO STA. 3+67, 11' LT.

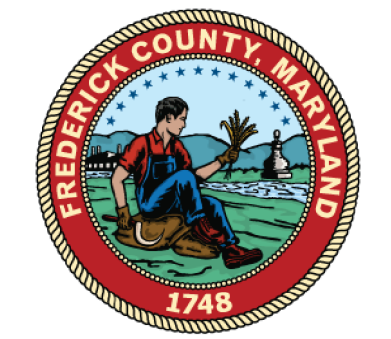
TYPE C TRAFFIC BARRIER END TREATMENT (MD 605.03)	
1 EA	STA. 2+18, 11' RT.
1 EA	STA. 3+76, 10' RT.
1 EA	STA. 4+17, 10' LT.

TYPE L TRAFFIC BARRIER END TREATMENT (MD 605.13)	
1 EA	STA. 2+60, 11' LT.

STORM DRAIN STRUCTURE SCHEDULE				
STRUCTURE ID	STATION	OFFSET	STANDARD	TYPE
ES-1	2+00	19' LT	MD 368.01	15' CONC. END SECTION
ES-2	2+52	22' LT	MD 368.01	15' CONC. END SECTION

STORM DRAIN PIPE SCHEDULE						
FROM	TO	TYPE	SIZE	LENGTH	INV. IN	INV. OUT
ES-1	ES-2	RCP	15"	56'	592.15	589.50

SHEET PS-01



BRIDGE REPLACEMENT  
 PRESTRESSED CONCRETE BEAM  
 BRIDGE NO. F05-22  
 ON HORNETS NEST ROAD  
 OVER FRIENDS CREEK

ROADWAY PLAN & PROFILE

SCALE \_\_\_\_\_ ADVERTISED DATE \_\_\_\_\_ N/A \_\_\_\_\_ CONTRACT NO. \_\_\_\_\_ RFP 16-019A \_\_\_\_\_

DESIGNED BY \_\_\_\_\_ SRM \_\_\_\_\_ COUNTY \_\_\_\_\_ FREDERICK \_\_\_\_\_  
 DRAWN BY \_\_\_\_\_ TDK \_\_\_\_\_ LOGMILE \_\_\_\_\_ XXXX - XXXX \_\_\_\_\_  
 CHECKED BY \_\_\_\_\_ KAR \_\_\_\_\_

