

Comprehensive Land Use Plan
Adopted as Part of the
Countywide
Comprehensive Plan
Resolution # 10-06
Effective: April 8, 2010
Tax Map 76 amended:
Res.#12-19, 09-13-2012

Agricultural / Rural

Natural Resource

Public/Quasi Public Park or Open Space

Rural Community

Rural Residential

Low Density Residential

Medium Density Residential

High Density Residential

Village Center

General Commercial

Limited Industrial

Office / Research Industrial

Mixed Use

Mixed Use Development

General Industrial

Mineral Mining

Institutional

Municipality

Community Growth Area

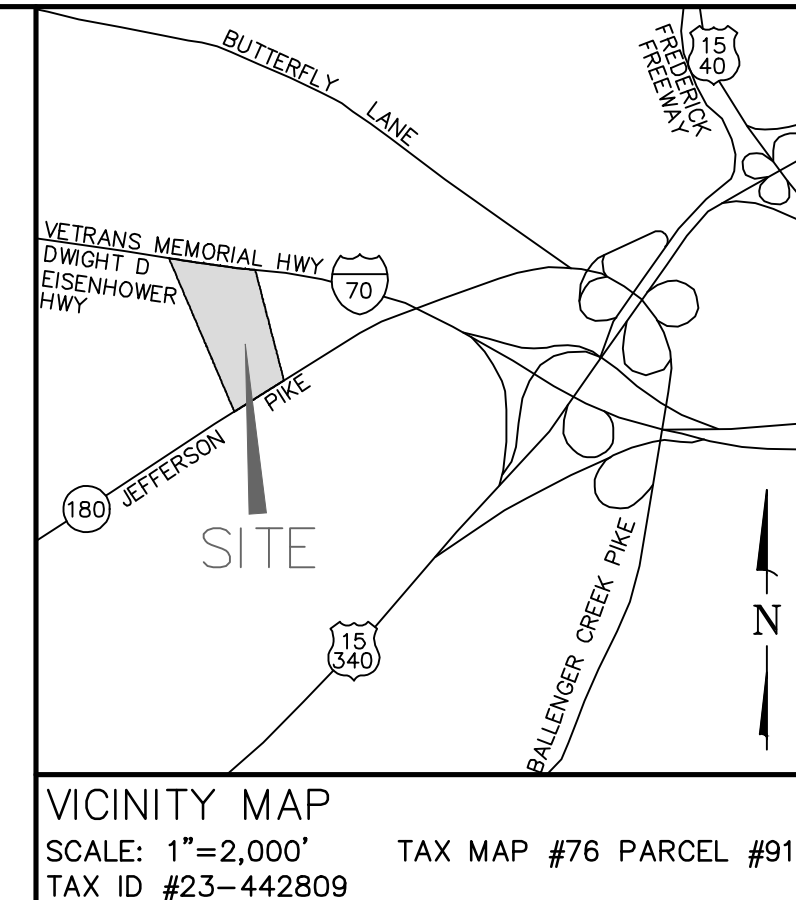
Community Facilities

Existing	Proposed	Schools
		Elementary (E)
		Middle (M)
		High (H)
		Special (S)
		Community (C)
		Regional (R)
		Special (S)
		Fire Station (F)
		Landfill (LF)
		Library (L)
		Police Station (P)
		Transit Station (T)

* The symbols for proposed community facilities are not fixed on the specific properties, but identify appropriate general locations.

Highways

Existing	Proposed	
		Freeway / Expressway
		Major Arterial
		Minor Arterial
		Collector
		Transit Easement
		Interchanges



125 S CARROLL STREET
FREDERICK
MARYLAND 21701
P: 301.652.4488
F: 301.652.4906
www.harris-smariga.com

HARRIS SMARIGA
PLANNERS • ENGINEERS • SURVEYORS

MDX LAND USE & TRANSPORTATION MAP
6126 JEFFERSON PIKE
MDX APPLICATION

PROJECT #
SITUATED AT 6126 JEFFERSON PIKE
FREDERICK ELECTION DISTRICT NO.23
FREDERICK COUNTY, MARYLAND

SCALE: 1"=100'	1
DRAWN BY: JLV	
CHECKED BY: CS	
DATE: FEB. 2022	
SHEET: 1	
OF: 1	
PROJECT: 7285	

1

1 \ PROJ 7285 \ MDX \ PLANNING \ MDX LAND USE PLANNING 3/7/2022 3:40 PM