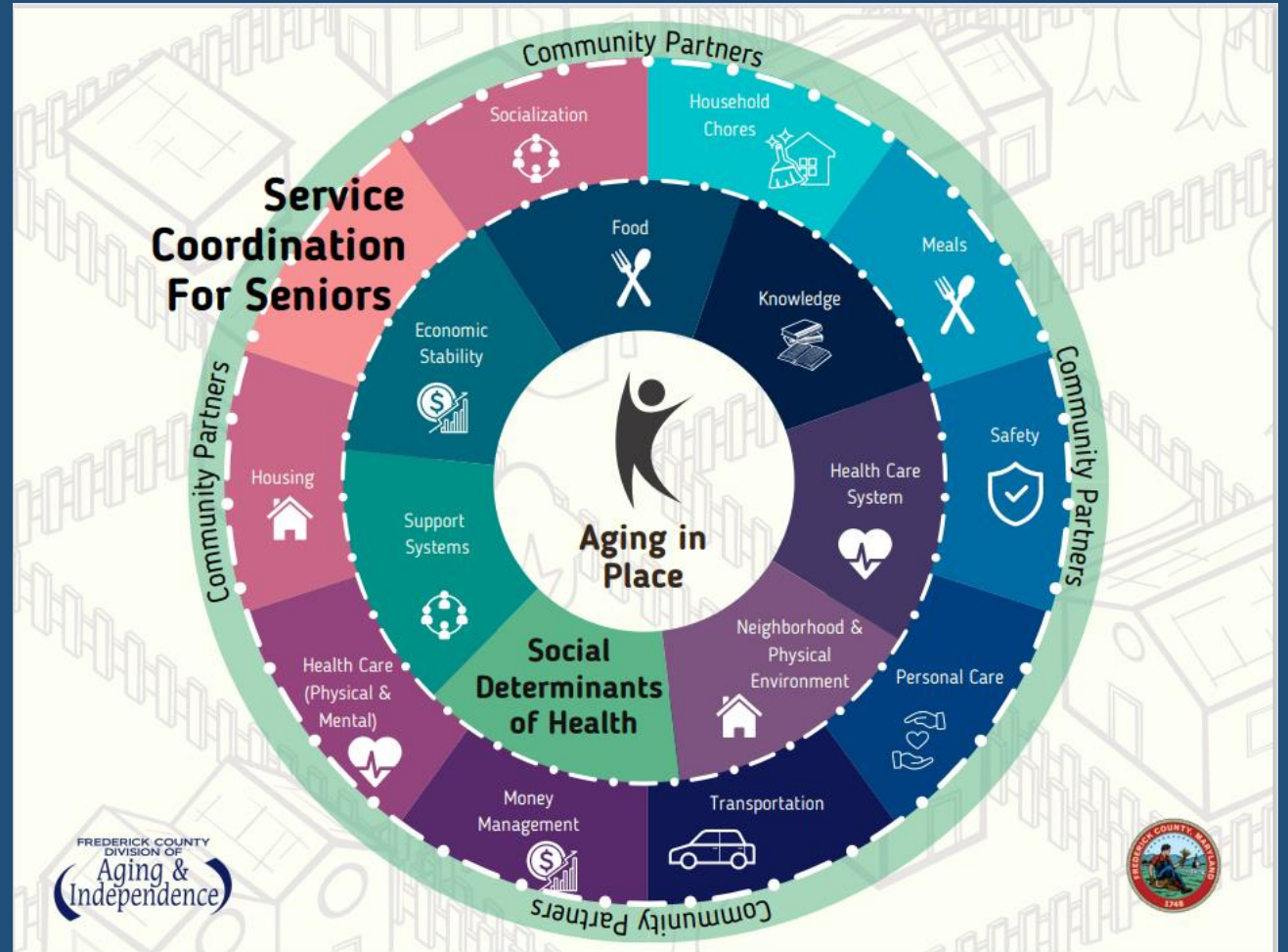


Service Coordination for Seniors

Stakeholder's Update

November 2, 2023



Agenda

01 - Demographic Trends

02 - Service Coordination
History

03 - Service Coordination in
the Community

04 - Value Added

05 - Next Steps

Demographic Trends



Senior Population by Age

POPULATION PROJECTIONS * 2010-2027

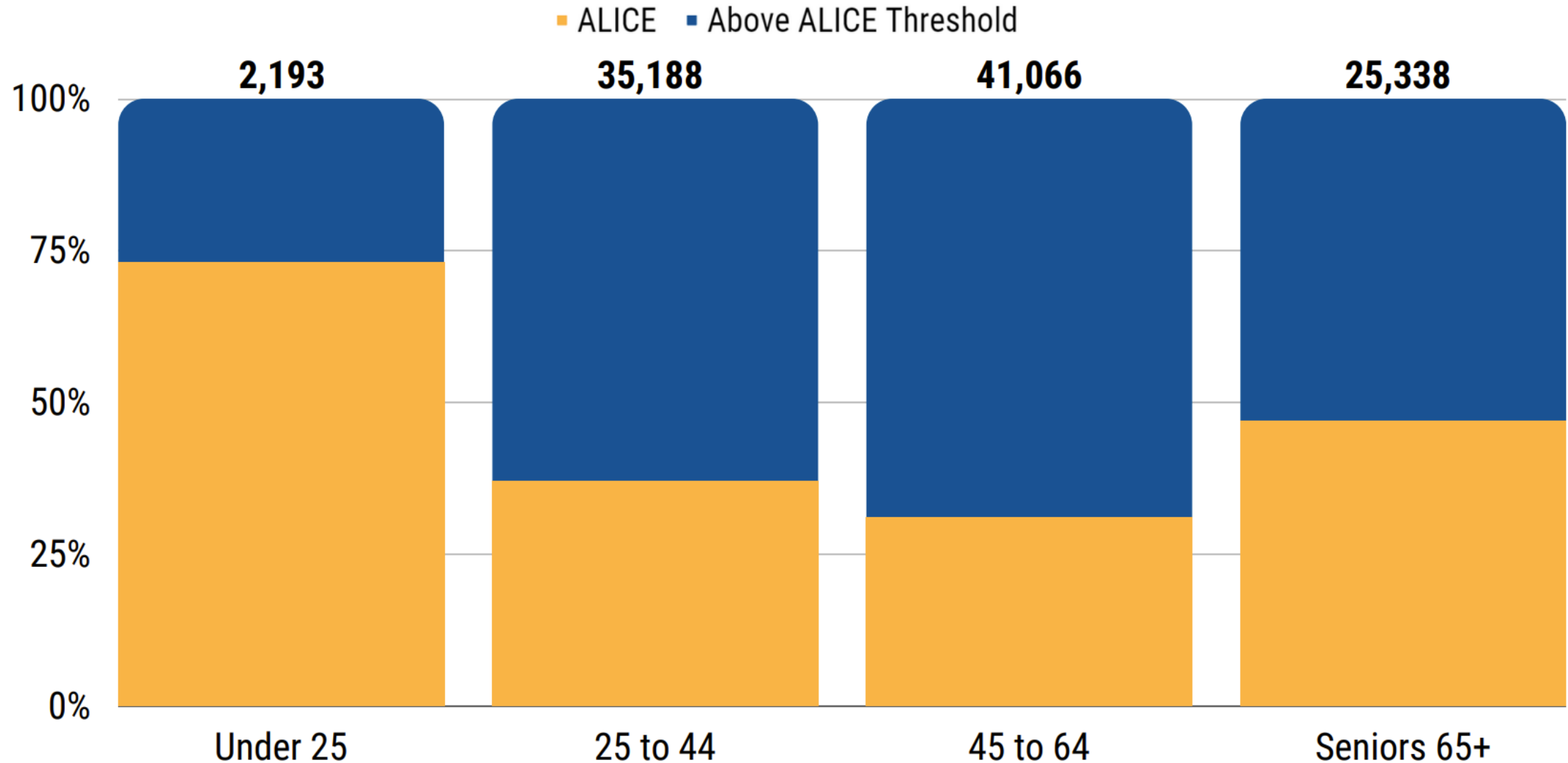
Census Age Cohort	2010 Actual	2020 Actual	July 2022 Estimate	Percent Change 2010-2020	2027 Estimate	Percent Change 2022-2027
Total	233,285	271,717	287,079	16.5%	293,969	8.19%
65+ Years	26,139	41,029	44,497	56.96%	49,152	19.8%

Population Projections 2022-2027—County, State, National*

Age Cohort	Frederick Co. Percent Change 2022-2027	Maryland Percent Change 2022-2027	National Percent Change 2022-2027
65+ Years	19.8%	18.7%	15.3%
75+ Years	12.4%	12.8%	10.8%
85+ Years	9.7%	9.3%	8.2%

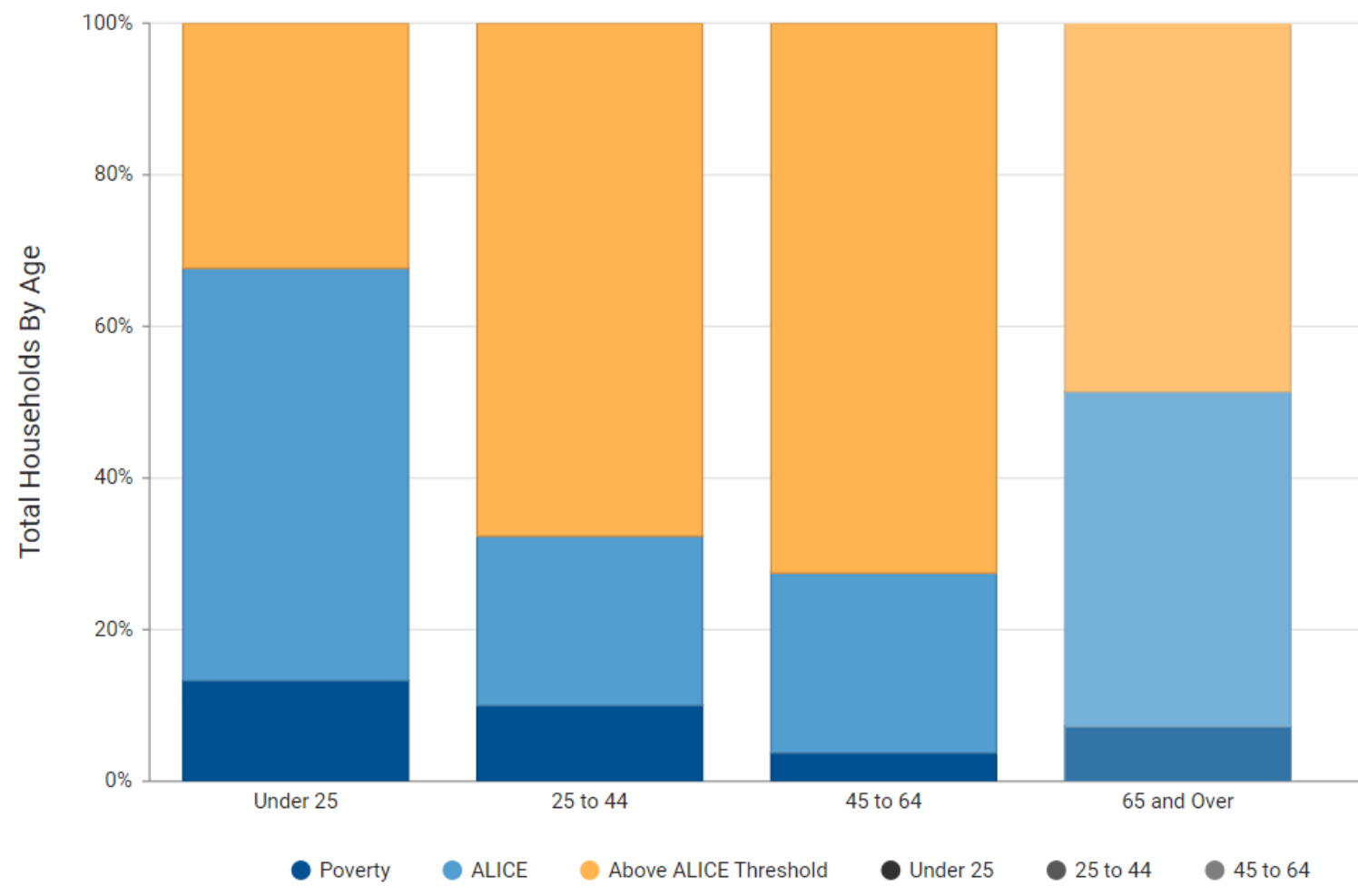
(Data taken from US Census Data and Health Dimensions Group Program for All-Inclusive Care for the Elderly Market Feasibility Report Client Confidential November 2022)

Demographics: Age | Frederick County



Source: www.unitedforalice.org

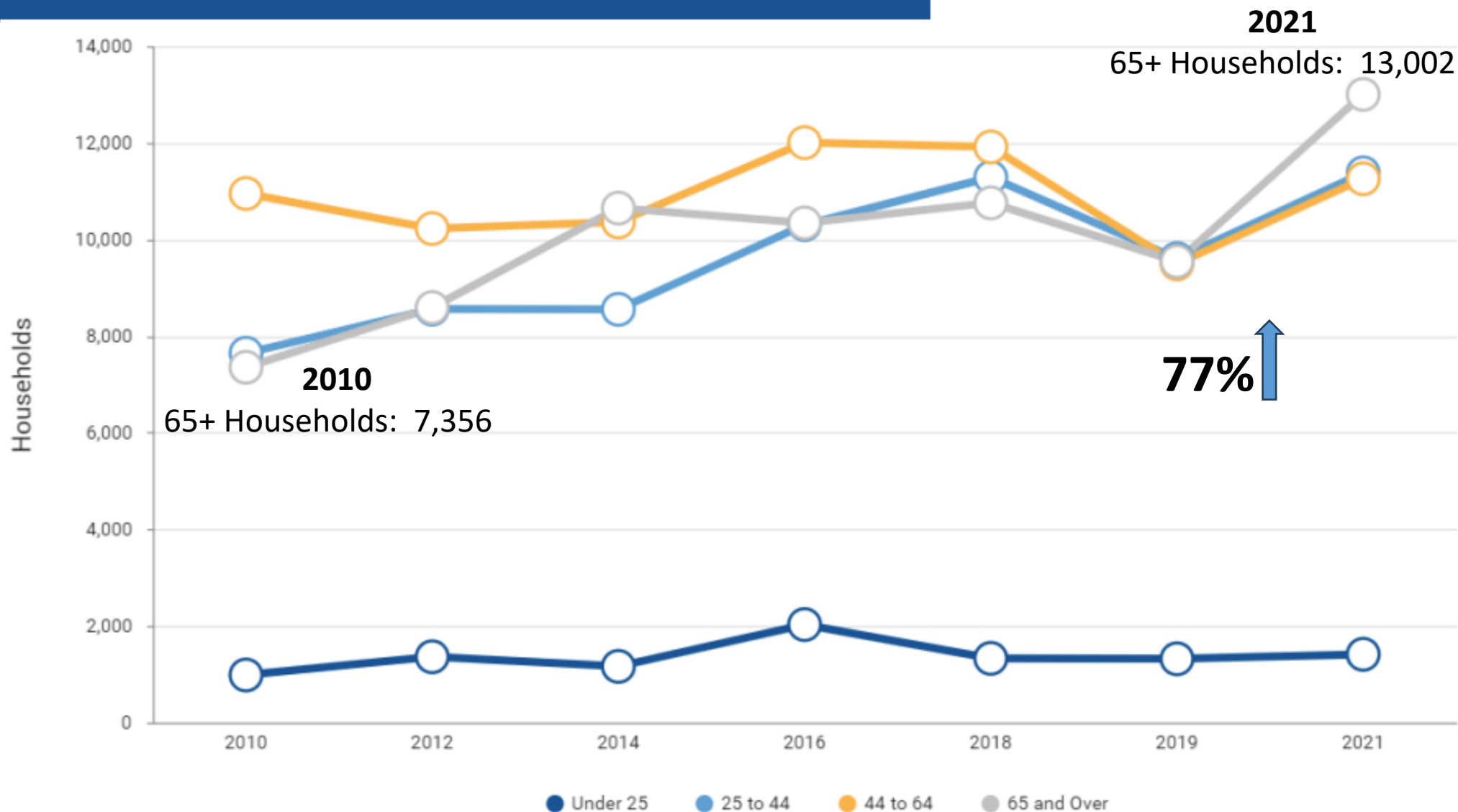
Households by Age, Frederick County, Maryland, 2021



65 and Over

- Above ALICE Threshold: 12,336
- ALICE: 11,202
- Poverty: 1,800

Seniors Over Time in Frederick County



Cost of Care

Long Term Care Costs in Frederick County *				
	MONTH	YEAR		P/Week
Home Health Aide (10h/p/w)	\$1,204	\$14,448		\$278
Adult Day Care (5 d/p/w)	\$2,264	\$27,168		\$522
Assisted Living	\$5,947	\$71,364		\$1,372
Nursing Home (Semi-private)	\$11,467	\$137,604		\$2,646
Nursing Home (Private)	\$13,048	\$156,576		\$3,011

* The AARP Long Term Care Cost Calculator estimates median costs in your area based on a nationwide cost-of-care survey. The survey, produced by [Genworth Financial](#), includes research from 435 cities in 50 states.

Looking for Solutions

- **Problem:** There is a rapidly increasing senior population in Frederick County and almost half of these seniors fall below the ALICE income level for sustainability in the County. Seniors want to age in place, given the option.
- **Goal:** Support Frederick County seniors to age in place for as long as they are able. To structure a support system for our rapidly growing senior population with improved results in quality of life and smarter resource management.
- **Answer:** Frederick County Service Coordination for Seniors.
- **Mission:** To help low-income seniors in Frederick County remain in their home through community-based service coordination.

What is Service Coordination?

One-to-one
trusted
relationship

Senior needs seen
as a whole

Seniors aging in
place with a
higher quality of
life

Cost-effective
process to reduce
duplication of
efforts

Community
collaboration and
care for its
seniors

Service Coordination History



Service Model Transition Timeline





Maryland Community Health
Resources Commission



Inaugural Service Coordination Funders & Collaborators



Intended Outcomes

Short Term

- Community aware of Service Coordination program and seniors referred to community-based services.
- Community service providers collaborate and work toward common goals.

Intermediate

- Client-selected “What Matters Most” items met a majority of the time.
- 90% of residents are residing in the same home as when entered program
- Evictions/Displacement occurred for less than 1% of program population.

Long-Term

- Medicare, Medicaid and/or MDOA reimbursing for this preventive program.
- Service Coordination programs for seniors replicated statewide.
- Streamlined support for seniors in our community allowing more seniors to age in place.

Early Program Impact

Total # of Clients in Pilot Program = 108

- **Reduction in social isolation**
- **Eviction prevention**
- **Reduction in 911 calls**
- **“What Matters Most” goals met**

Service Coordination in the Community





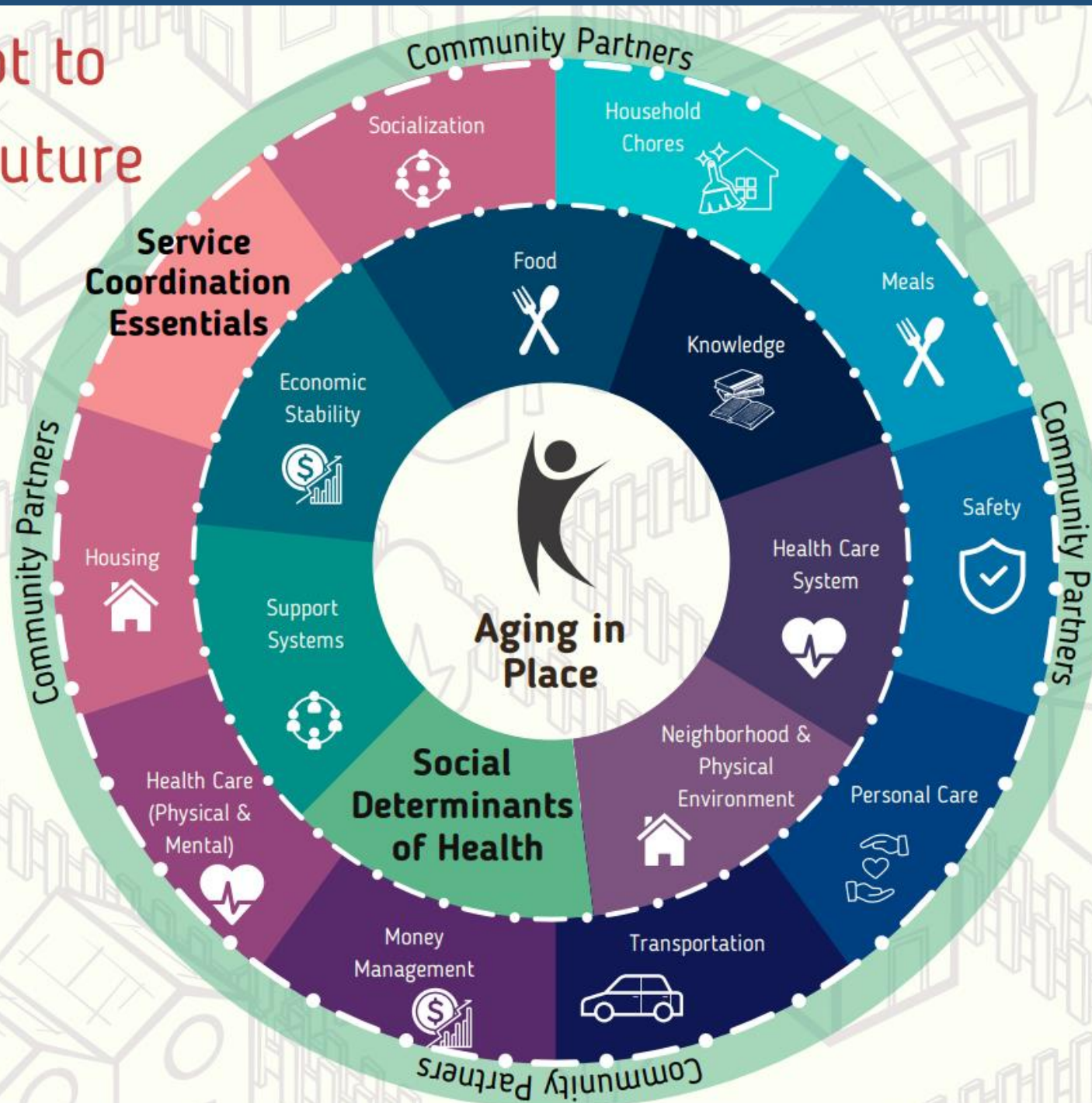
Public Health
Prevent. Promote. Protect.
Frederick County Health Department



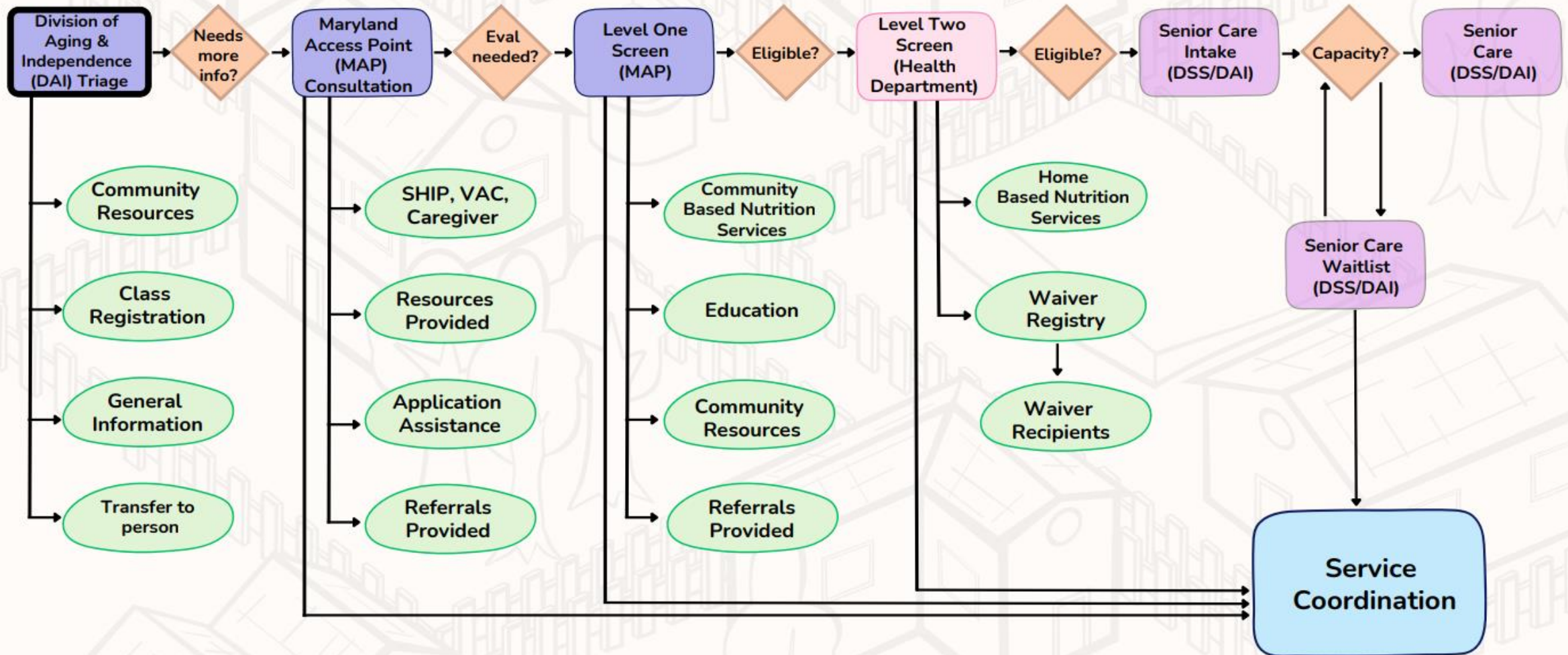
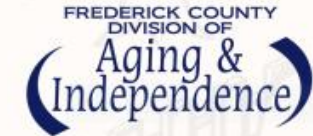
Service Coordination Steering Committee



Pivot to the Future



Home & Community Based Services Workflow



Staffing Structure

Serving 80 Clients*

- **1 RN**
- **1 Service Coordinator** (Social Worker)
- **2 Community Health Workers**
- **Community Providers**
- **Volunteers**

* Based on Service Coordination pilot program data

Community Partners

- Next Steps:
 - Review and update data of current community providers
 - Identify new providers
 - Create new partnerships
 - Enhance volunteer opportunities

Program Sustainability

Maryland
Department
of Aging

Grant
Funding
Opportunities

Frederick
County
Government

Value Added



Value
Added



Seniors

Stakeholders

Frederick County

Value Added

Seniors

Service Coordination provides on-the-ground reliable, trusted, longitudinal support system, providing essential linkages that promote aging in place.



Value
Added

Stakeholders

Greater collaboration between all community partners, increasing cross referrals and programmatic efficiencies.

Value Added

Frederick County

Service Coordination will meet the needs of the rapidly growing senior population, supporting their desire to age in place and do so with improved results in quality of life and smarter resource management.

Questions ?



Connect With Us

WEBSITE:

WWW.FREDERICKCOUNTYMD.GOV/SERVICECOORDINATION



EMAIL:

SERVICECOORDINATION@FREDERICKCOUNTYMD.GOV



CALL: 301.600.1234

