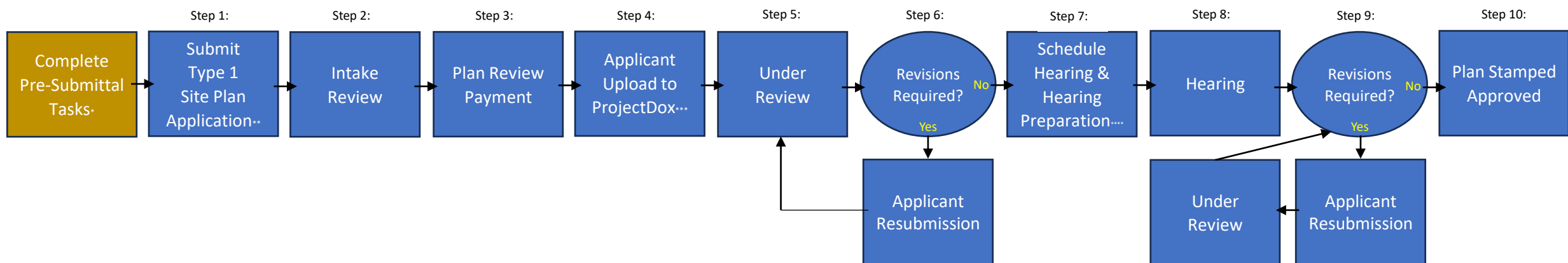


Type 1 Site Plan Process



Notes:

*Complete Notice of Intent to Develop (NID). Complete Pre-application Meeting with County Staff (Optional).

**Type 1 Site Plans must be submitted at the same time as the appropriate Adequate Public Facilities (APFO) and Forest Resource (FRO) applications.

****Hearing Preparation includes electronic files of the Rendered Plan, Hard Copies of the Plans, and Supplementary Documents. County Staff will issue public notice signage.